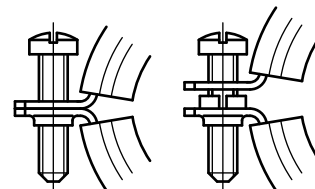


BISMAT[®] 5000 (Ø ½ - 2")

for plastic pipes Ø ½ - 2"

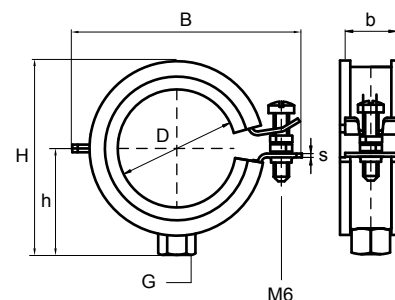
3/8"



Features and benefits

- single screw clamp
- with BISMAT[®] quick locking system
- with removable spacer washers, making the clamp suitable for either location or tight fixing
- material: steel
- zinc plated
- noise insulating lining, EPDM rubber, green
- lining: very suitable for applications with plastic pipes
- inner part of lining is flush to improve sliding of pipe in clamp
- lining resistant to aging
- noise insulation tested according to DIN 4109
- complies with Federal Specification WW-H-w171E and A-A-1192A Type 4 and Manufacturers Standardization Society MSS SP-58 and SP-69 type 12
- Plenum rated - tested to ASTM E-84

Part No.	D (mm)	IP (")	CT (")	G	B (")	H (")	h (")	b x s (mm)	Fa,z (lbs)	Pack 1
CR 348 9 018	15 - 18	3/8	1/2	3/8"	1.9	1.6	0.87	20 x 1.25	47	50
CR 348 9 023	20 - 23	1/2	3/4	3/8"	2.2	1.7	0.91	20 x 1.25	47	50
CR 348 9 028	25 - 28	3/4	1	3/8"	2.4	1.9	1.00	20 x 1.25	47	50
CR 348 9 035	31 - 35	1	1 1/4	3/8"	2.6	2.2	1.20	20 x 1.25	47	50
CR 348 9 043	40 - 43	1 1/4	1 1/2	3/8"	3.0	2.6	1.30	20 x 1.25	67	50
CR 348 9 053	48 - 53	1 1/2	-	3/8"	3.3	3.0	1.50	20 x 1.50	67	50
CR 348 9 056	54 - 56	-	2	3/8"	3.5	3.0	1.60	20 x 1.50	67	50
CR 348 9 058	60 - 65	2	-	3/8"	4.3	3.4	1.70	20 x 1.50	105	50



RAL¹ = tested and certified according to RAL-GZ 655/B.

The max. allowed load (Fa,z) is calculated using specific statistical methods related to the breaking load, taking into account a deflection of 1,5 mm or 2% of the maximum nominal clamp diameter. According to the RAL requirements, the test results from above mentioned RAL certified articles are monitored by an independent test institute.