



# SERVICE PARTS LIST

**BULLETIN NO.**  
54-07-2201

SPECIFY CATALOG NO. AND SERIAL NO. WHEN ORDERING PARTS		REVISED BULLETIN	DATE
<b>TRUE-RMS MULTIMETER</b>			Nov. 2013
<b>CATALOG NO.</b>	<b>2217-20</b>	<b>SERIAL NUMBER</b>	<b>B83B</b>
WIRING INSTRUCTION			

**EXAMPLE:**  

00	0
----	---

 Component Parts (Small #) Are Included  
 When Ordering The Assembly (Large #).

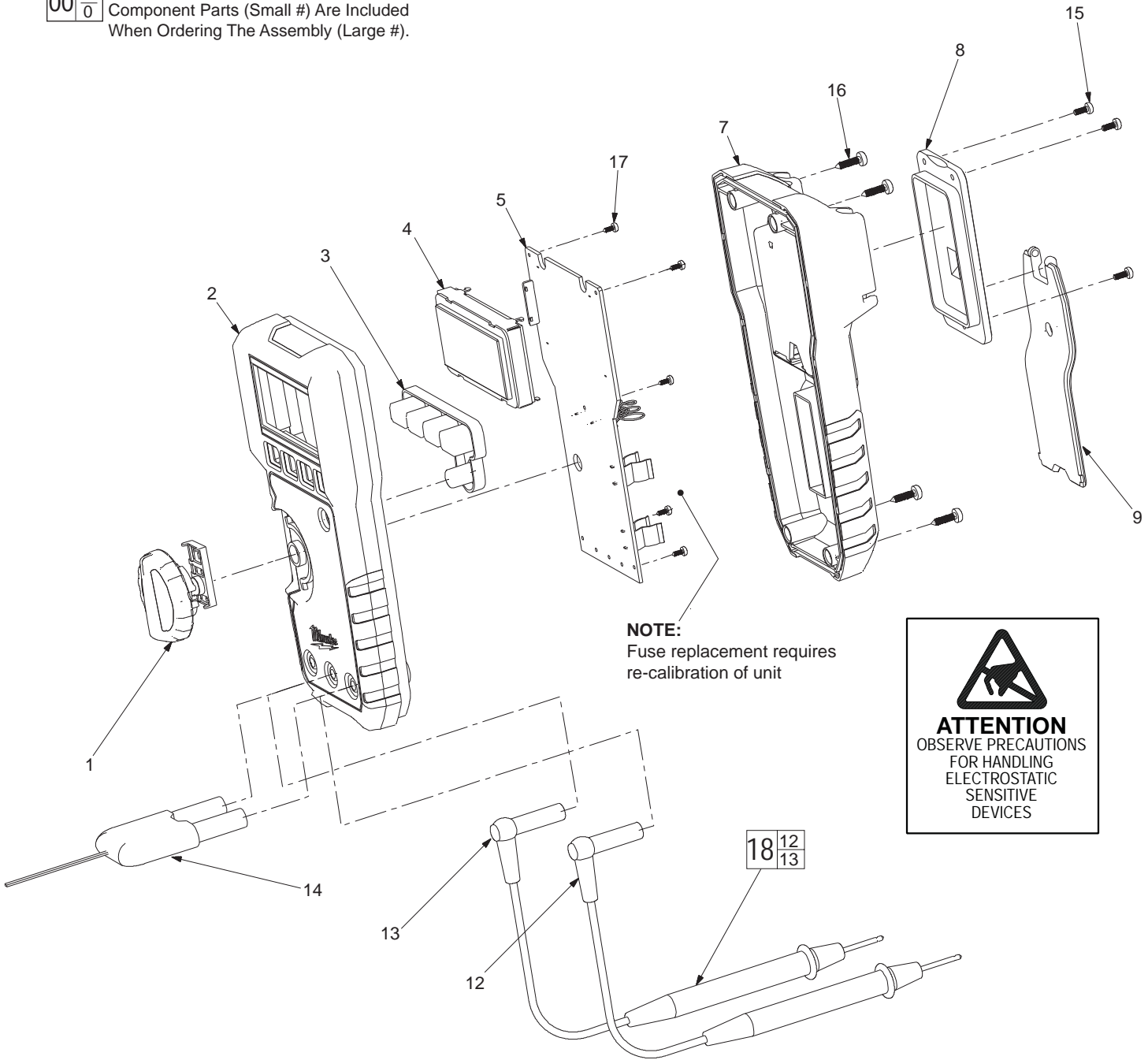


FIG.	PART NO.	DESCRIPTION OF PART	NO. REQ.
1	-----	Rotary Switch	(1)
2	-----	Top Case	(1)
3	-----	Rubber Keypad	(1)
4	-----	LCD Module	(1)
5	-----	Main PCA	(1)
7	-----	Bottom Case	(1)
8	31-21-0035	Battery Door	(1)
9	31-70-0155	Bale, DMM Stand	(1)
12	-----	Red Test Lead	(1)
13	-----	Black Test Lead	(1)
14	49-77-2001	K-Type Thermocouple	(1)
15	05-81-0260	Battery Door Screw	(3)
16	05-81-0265	Bottom Case Screw	(4)
17	-----	PCA Screw	(5)
18	49-77-1001	Test Lead Set (Contains 12 & 13)	(1)