

Model WBR

In Building Riser (4", 6", 8", 10")

*This product contains a weighted average lead content less than 0.25% for wetted surfaces.

LEAD-FREE*



Installation

INSTALLATION INSTRUCTIONS

CAUTION: Installation of In Building Risers must be performed by qualified personnel. The installer should be sure the proper device has been selected for the particular installation. Faulty installation could result in an improperly functioning device.

ZURN WILKINS Model WBR In Building Risers are designed for use to connect a water supply line from outside the building to the water system inside the building.

Care should be taken not to damage ends of WBR during installation. The WBR should be restrained underground to prevent movement.

Some soil conditions such as high chloride values, PH lower than 4.5 and resistivity less than 2000 ohm per cm can cause corrosion of the stainless steel pipe not covered under warranty. Precautions, such as wrapping the WBR should be taken to protect the WBR from corrosion damage. Refer to local pipe and fittings wrapping specifications.

Always consult local codes for installation methods, approvals and guidance.

Below Ground Connection - Push-on Gasketed Coupling

Either ductile iron or C900 PVC pipe may be connected to the WBR underground. Connect piping to the WBR using industry standard procedures such as those given in Uni-Bell piping handbook.

1. Clean out inside of the WBR. Insure that the bell end of the WBR is free of dirt and debris to insure a good seal.
2. A gasket has been factory installed in the groove in the bell. Insure that the gasket is clean, undamaged, fully seated in the groove and facing the correct direction (see illustration). Do not lubricate the outside of the gasket. Contact ZURN-WILKINS if a replacement gasket is required.
3. Insure that the mating pipe spigot has a factory spec bevel produced by a pipe bevel tool, to prevent damaging the gasket in the bell. Lubricate end of mating pipe with the appropriate pipe joint lubricant.
4. Push lubricated end past gasket until it is fully seated. The two brackets located on the side of the bell end may be used in conjunction with a pulley to winch the pipe into the bell if necessary. **The brackets are not intended to be used as an attachment point for a permanent restraint to secure the inlet pipe to the WBR.** The inlet piping must be fully restrained to prevent separation from the WBR when the system is pressurized.
5. Consult local codes for joint restraint requirements.
6. The maximum allowed pipe deflection angle between the WBR and underground pipe is as follows:

Size of WBR	Maximum Deflection
4"	.5°
6"	1°
8"	1°
10"	1°

Above Ground Connection - AWWA C606 Grooved Connection

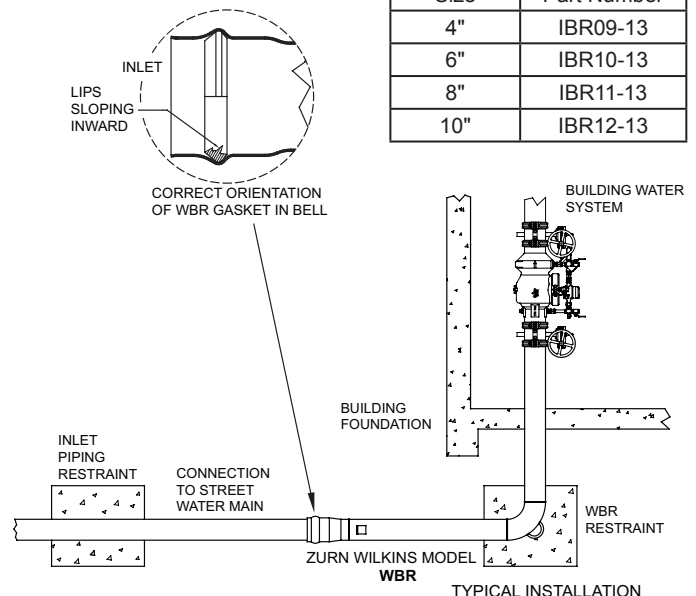
Use an IPS sized grooved coupling to attach the WBR to the inside piping system.

1. Insure that the gasket surfaces and grooves of the WBR and grooved pipe being attached are clean and free of nicks and gouges that may cause the coupling to leak. Remove gasket. Remove gasket from grooved coupling by loosening and then removing nuts and bolts. Lubricate gasket using lubricant recommended by the manufacturer or a liquid soap solution.
2. Install gasket on coupling end of WBR. The edge of the gasket should be flush or slightly below the pipe end.
3. Place grooved pipe end on grooved end of WBR and slide coupling gasket onto pipe end. The gasket should be centered between the groove in the pipe and the groove in the WBR.
4. Lubricate inside of coupling housings. Place coupling housings over gasket. Some couplings only go together one way so make sure housing halves are oriented correctly.
5. Install bolts and tighten nuts evenly. The housing halves should come together solidly. If the gasket starts to pinch, remove bolts and verify the gasket has not been damaged. Lubricate inside ends of the housings again and attach housing halves.

Placing Device in Service

1. Flush WBR with water to remove dirt and debris remaining from installation.
2. If required, disinfect per AWWA standard C651. **WARNING:** Do not allow chlorine concentration to exceed the level and duration of test stated in the standard. Exceeding concentration or duration will result in damage to the WBR and void the warranty.

Replacement bell end gaskets	
Size	Part Number
4"	IBR09-13
6"	IBR10-13
8"	IBR11-13
10"	IBR12-13



Proper performance is dependent upon licensed, qualified personnel performing regular, periodic testing according to ZURN WILKINS' specifications and prevailing governmental & industry standards and codes and upon following these installation instructions. Failure to do so releases ZURN WILKINS of any liability that it might otherwise have with respect to that device. Such failure could also result in an improperly functioning device.

- ▲ **WARNING:** Cancer and Reproductive Harm - www.P65Warnings.ca.gov
- ▲ **ADVERTENCIA:** Cáncer y daño reproductivo - www.P65Warnings.ca.gov
- ▲ **AVERTISSEMENT:** Cancer et néfastes sur la reproduction - www.P65Warnings.ca.gov



ZURN WILKINS

1747 Commerce Way, Paso Robles, CA 93446 Phone:855-663-9876 Fax:805-238-5766