

Couplings, Flanges and Flange Kits

Specification Sheet Page 1 of 1

Infinity Metering Company supplies high quality water meter couplings, flanges and gaskets, at the lowest competitive price. These vital connectors join the municipal water supply to a home or business utility meter for measuring the volume of water passing through the supply pipe.

Meter Couplings

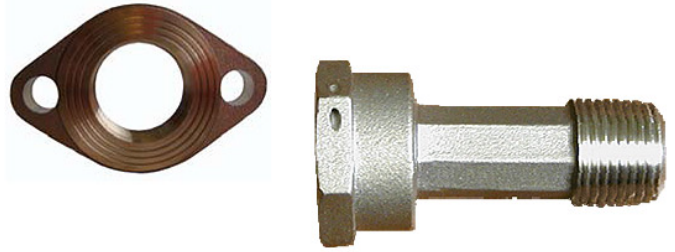
The 510 series meet or exceed AWWA standards. The ribs are squared and the inside of the barrels are machined through. They are made from 85/5/5/5 bronze. Each coupling comes with a 1/8" rubber washer. Infinity's couplings are made to fit any 5/8" to 2" water meter, regardless of the manufacturer.

Size	Part Number
5/8"	510-050
3/4"	510-070
1"	510-100
1-1/2"	510-150
2"	510-200

Flanges

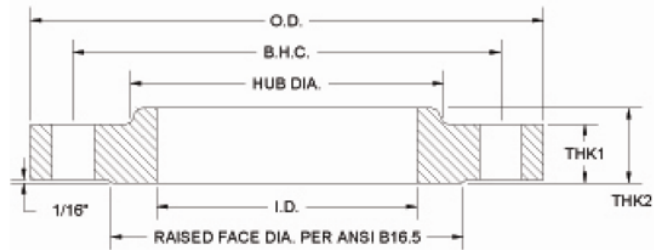
The product integrity of the 524 series is ensured at every step of the engineering and manufacturing process. Our flanges meet or exceed the AWWA standards in both design and alloy. They are poured in no lead bronze. Each flange comes with a rubber gasket. The flange kit comes with zinc nuts and bolts. Stainless steel nuts and bolts are an option at an additional cost.

Size	Part Number
1-1/2"	524-150
1-1/2"	Kit 524-150K
2"	524-200
2"	Kit 524-200K
2"	Male Iron Pipe 524-200-MIP
3"	524-300
3"	Kit 524-300K
4"	524-400
4"	Kit 524-400K
6"	524-600
6"	Kit 524-600K
8"	524-800
8"	Kit 524-800K
10"	524-1000
10"	Kit 524-1000K
12"	524-1200
12"	Kit 524-1200K



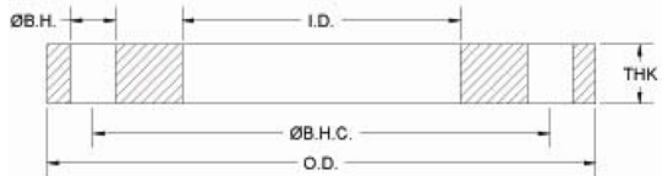
Companion Flanges

These flanges are made to fit 3" through 8" turbine meters. Call 888-342-2752 for pricing and availability.



Class D Carbon Steel Flanges

Infinity offers class 1D slip on steel flanges in a wide range of sizes. Call 888-342-2752 for pricing and availability.



Due to continuous research and product enhancements, Infinity Metering Company, Inc. reserves the right to change product or system specifications without notice, except to the extent an outstanding contractual obligation exists.



Find out more by visiting our website at www.imcmeter.com
info@imcmeter.com

PO Box 948
 Claremore, OK 74018
 TF. 888-342-2752
 P. 918-342-2752
 F. 918-342-5949

PO Box 1088
 Ocala, FL 34478-1088
 TF. 888-401-0070
 P. 352-401-0017
 F. 352-401-3464