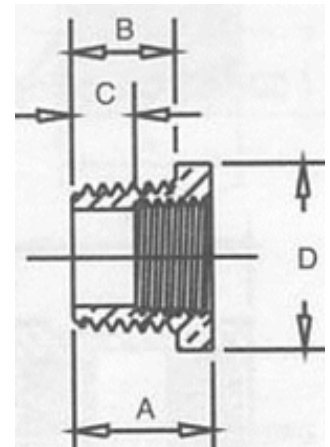


DIMENSIONAL SPECIFICATIONS

LEAD-FREE DOMESTIC BRASS FITTINGS* 125 LB.

HEX BUSHING

Part #	Size (IN.)	Approx. Net WT. (LB.)	A	B	C	D
NL114-0802	1/2 X 1/8	0.09	0.75	0.56	0.50	0.88
NL114-0804	1/2 X 1/4	0.10	0.75	0.56	0.43	0.88
NL114-0806	1/2 X 3/8	0.06	0.75	0.56	0.34	0.88
NL114-1202	3/4 X 1/8	0.14	0.88	0.63	0.25	1.16
NL114-1204	3/4 X 1/4	0.15	0.85	0.63	0.53	1.16
NL114-1206	3/4 X 3/8	0.14	0.85	0.63	0.49	1.16
NL114-1208	3/4 X 1/2	0.11	0.85	0.63	0.32	1.16
NL114-1602	1 X 1/8	0.22	1.06	0.75	0.75	1.44
NL114-1604	1 X 1/4	0.25	1.05	0.75	0.73	1.44
NL114-1606	1 X 3/8	0.20	1.05	0.75	0.69	1.13
NL114-1608	1 X 1/2	0.25	1.00	0.75	0.57	1.13
NL114-1612	1 X 3/4	0.19	1.00	0.75	0.50	1.13
NL114-2008	1-1/4 X 1/2	0.40	1.14	0.80	0.71	1.34
NL114-2012	1-1/4 X 3/4	0.43	1.1	0.80	0.64	1.76
NL114-2016	1-1/4 X 1	0.30	1.08	0.80	0.47	1.78
NL114-2412	1-1/2 X 3/4	0.50	1.20	0.83	0.70	1.63



*Conforms with lead content requirements for lead-free plumbing as defined by the U.S. Safe Drinking Water Act. Certified <0.25 weighted average % lead.



MERIT BRASS

DIRECTING THE FLOW OF *Quality*