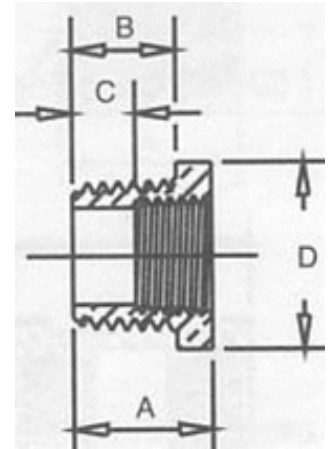


# DIMENSIONAL SPECIFICATIONS

LEAD-FREE DOMESTIC BRASS FITTINGS\* 125 LB.

## HEX BUSHING CONTINUED

Part #	Size (IN.)	Approx. Net WT. (LB.)	A	B	C	D
NL114-2416	1-1/2 X 1	0.45	1.14	0.83	0.56	2.00
NL114-2420	1-1/2 X 1-1/4	0.35	1.14	0.83	0.43	2.00
NL114-3204	2 X 1/4	0.66	1.25	0.25	0.73	2.38
NL114-3208	2 X 1/2	1.00	1.31	0.88	0.88	1.34
NL114-3212	2 X 3/4	0.95	1.31	0.88	0.81	1.63
NL114-3216	2 X 1	0.77	1.36	0.91	0.78	1.96
NL114-3220	2 X 1-1/4	0.75	1.22	0.88	0.55	2.50
NL114-3224	2 X 1-1/2	0.65	1.22	0.88	0.52	2.50
NL114-4016	2-1/2 X 1	1.03	1.53	1.09	0.94	1.97
NL114-4020	2-1/2 X 1-1/4	1.07	1.53	1.09	0.84	2.97
NL114-4032	2-1/2 X 2	1.15	1.44	1.07	0.69	2.41
NL114-4816	3 X 1	1.97	1.63	1.13	1.03	3.50
NL114-4820	3 X 1-1/4	1.75	1.63	1.13	0.94	3.50
NL114-4824	3 X 1-1/2	1.52	1.63	1.13	0.91	3.50
NL114-4832	3 X 2	1.65	1.61	1.13	0.86	3.50
NL114-4840	3 X 2-1/2	1.70	1.53	1.13	0.61	3.88



\*Conforms with lead content requirements for lead-free plumbing as defined by the U.S. Safe Drinking Water Act. Certified <0.25 weighted average % lead.



# MERIT BRASS

DIRECTING THE FLOW OF *Quality*