



Brenham™
Wall-Mount Bathroom Sink
K-1997-1NR

Features

- Single faucet hole.
- Oval basin.
- Sealed overflow drain.
- Right-hand hole drilled for soap or lotion dispenser.
- Includes wall hanger.

Material

- Vitreous china.

Installation

- Wall-mount
- Drilled for concealed arm carrier installation.

Optional Accessories

K- 8998 P-Trap
K- 1998 Shroud

Components

Additional included component/s: Hanger (2 required).



ADA

CSA B651

OBC

Codes/Standards

ASME A112.19.2/CSA B45.1
ADA
ICC/ANSI A117.1
CSA B651
OBC

KOHLER® One-Year Limited Warranty
See website for detailed warranty information.

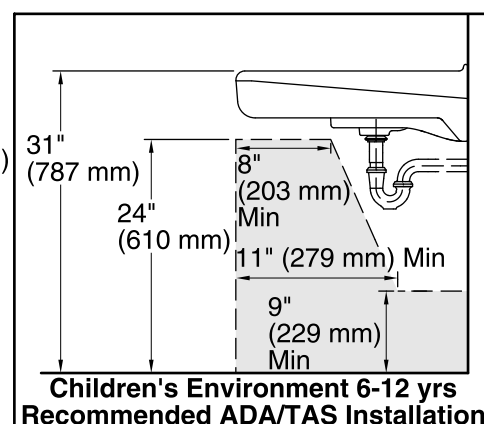
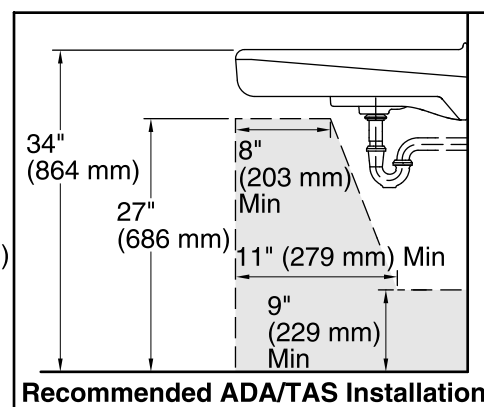
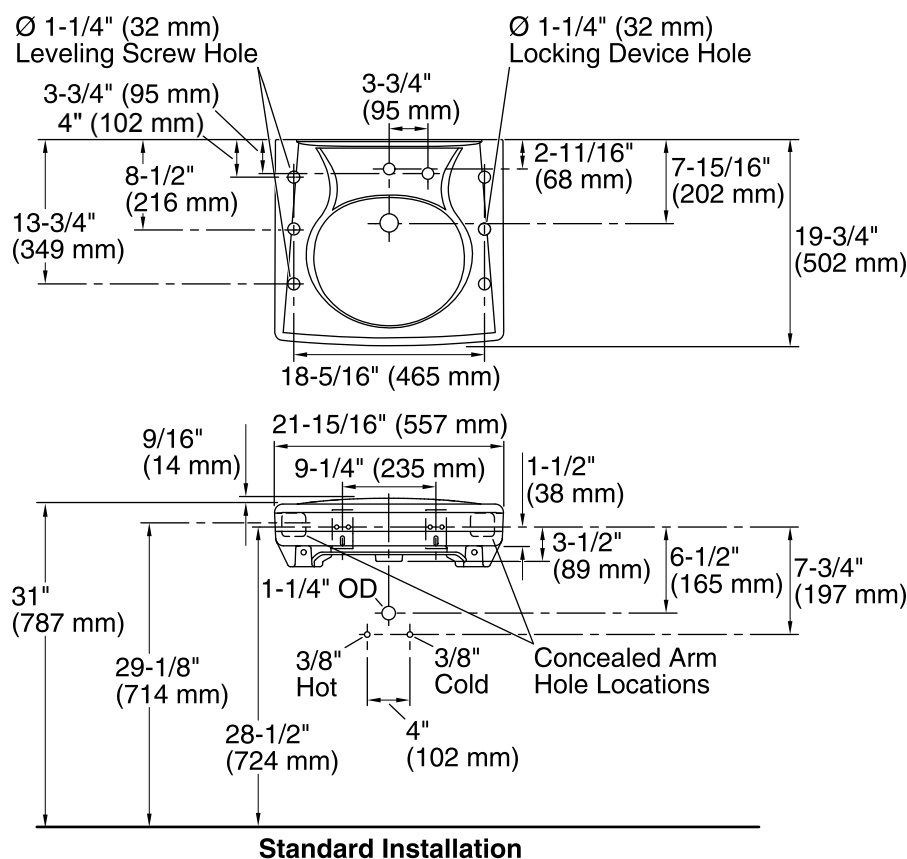
Available Color/Finishes

Color tiles intended for reference only.

Color	Code	Description
-------	------	-------------



0	White
---	-------



Technical Information

All product dimensions are nominal.

Bowl configuration: Single

Installation: Wall-mount

Bowl area (Only) Length: $14\text{-}3/8"$ (365 mm)
Width: $12\text{-}5/16"$ (313 mm)
With overflow: Yes
Water depth: $3\text{-}1/4"$ (83 mm)

Bowl area With overflow: Yes

Number of deck holes: 2

Faucet hole(s): $1\text{-}3/8"$ (35 mm)

Soap/Lotion hole: $1\text{-}1/4"$ (32 mm)

Drain hole: $1\text{-}3/4"$ (44 mm)

Notes

Install this product according to the installation guide.

ADA, OBC, CSA B651 compliant when installed to the specific requirements of these regulations.