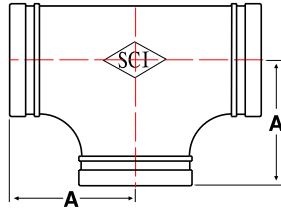


**Fig. 65T & 66T**  
Tee, Standard Radius

- Ductile Iron - Full Flow
- UL/FM - 1-1/4" to 12" only

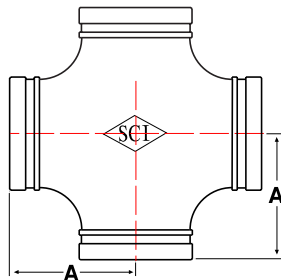


Pipe Size in / mm	Part Number		A in / mm	Case Qty	Weight lb / kg
	Painted	Galvanized			
1-1/4 32	65T 3012	66T 3012	2.75 69.9	35	1.4 0.7
1-1/2 40	65T 3014	66T 3014	2.75 69.9	24	1.7 0.8
2 50	65T 3020	66T 3020	3.25 82.6	15	3.1 1.4
2-1/2 65	65T 3024	66T 3024	3.75 95.3	7	4.1 1.9
3 80	65T 3030	66T 3030	4.25 108.0	10	5.8 2.6
4 100	65T 3040	66T 3040	5.00 127.0	5	10.0 4.5
5 125	65T 3050	66T 3050	5.50 139.7	-	15.0 6.8
6 150	65T 3060	66T 3060	6.50 165.1	-	22.3 10.1
8 200	65T 3080	66T 3080	7.75 196.9	-	41.1 18.6
10 250	65T 3100	66T 3100	9.00 229.0	-	64.8 29.4
12 300	65T 3120	66T 3120	10.00 254.0	-	90.9 41.2
14 350	65T 3140	66T 3140	11.00 279.0	-	116.8 53.0
16 400	65T 3160	66T 3160	12.00 305.0	-	145.0 65.9

18" through 24" sizes available upon request.

**Fig. 65X & 66X**  
Cross, Standard Radius

- Ductile Iron - Full Flow
- UL/FM - 1-1/4" to 8" only

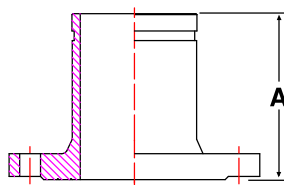


Pipe Size in / mm	Part Number		A in / mm	Case Qty	Weight lb / kg
	Painted	Galvanized			
1-1/4 32	65X 3012	66X 3012	2.75 69.9	20	1.8 0.8
1-1/2 40	65X 3014	66X 3014	2.75 69.9	16	2.0 0.9
2 50	65X 3020	66X 3020	3.25 82.6	20	3.3 1.5
2-1/2 65	65X 3024	66X 3024	3.75 95.3	10	4.9 2.2
3 80	65X 3030	66X 3030	4.25 108.0	7	7.3 3.3
4 100	65X 3040	66X 3040	5.00 127.0	4	10.0 4.5
5 125	65X 3050	66X 3050	5.50 139.7	-	15.3 6.9
6 150	65X 3060	66X 3060	6.50 165.1	-	24.6 11.1
8 200	65X 3080	66X 3080	7.75 196.9	-	41.6 18.9

10" through 24" sizes available upon request.

**Fig. 65FA & 66FA**  
Grooved x Flange Adapter

- Ductile Iron
- UL/FM - 2" to 8" only
- Matches Class 125/150 flange dimensions



Pipe Size in / mm	Part Number		A in / mm	Case Qty	Weight lb / kg
	Painted	Galvanized			
2 50	65FA3020	66FA3020	4.00 101.6	8	4.0 1.8
2-1/2 65	65FA3024	66FA3024	4.00 101.6	5	5.4 2.5
3 80	65FA3030	66FA3030	4.00 101.6	4	6.4 2.9
4 100	65FA3040	66FA3040	6.00 152.4	-	12.7 5.8
6 150	65FA3060	66FA3060	6.00 152.4	-	19.0 8.6
8 200	65FA3080	66FA3080	6.00 152.4	-	28.8 13.1
10 250	65FA3100F	66FA3100F	8.00 203.2	-	66.0 30.0
12 300	65FA3120F	66FA3120F	10.00 254.0	-	97.0 44.1

5" & 14" through 24" sizes available upon request.

GROOVED