



COOPLOK™ Grooved Submittal

Short Radius Fittings

- Fig. 65ES & 66ES Short Radius 90° Elbow
- Fig. 65TS & 66TS Short Radius Tee

COOPLOK™ Short Radius Elbows and Tees are Ductile Iron castings, designed for use in fire sprinkler systems.

Drain Fittings

- Fig. 65DC & 66DC Drain Cap (w/ 1" tap)
- Fig. 65DE & 66DE Drain 90° Elbow (w/ 1" tap)

COOPLOK™ Drain Caps and Drain 90° Elbows are Ductile Iron castings, not fabricated.

Material Specifications

Fitting Materials:

Ductile Iron castings conform to ASTM A-536, Grade 65-45-12

Coating:

- Orange Paint (rust inhibiting) – Standard Coating
- Hot Dipped Galvanized conforming to ASTM A-153

Project Information

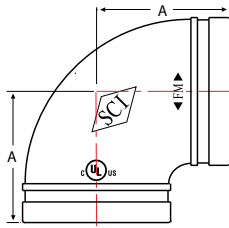
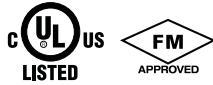
Project/Job/System:	
Submittal Date:	
Engineer:	Contractor:
Address:	Address:
City/State:	City/State:
Notes:	

Approval Stamp



Fig. 65ES & 66ES
90° Elbow, Short Radius

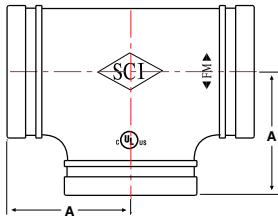
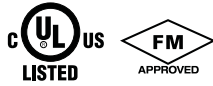
- Ductile Iron - Full Flow



Pipe Size in / mm	Part Number		A in / mm	Case Qty	Weight lb / kg
	Painted	Galvanized			
2 50	65ES3020	66ES3020	2.75 69.9	26	1.5 0.7
2-1/2 65	65ES3024	66ES3024	3.00 76.2	16	2.0 0.9
3 80	65ES3030	66ES3030	3.38 85.9	20	2.9 1.3
4 100	65ES3040	66ES3040	4.00 101.6	12	4.6 2.1
6 150	65ES3060	66ES3060	5.50 139.7	-	11.4 5.2
8 200	65ES3080	66ES3080	6.81 173.0	-	22.7 10.3

Fig. 65TS & 66TS
Tee, Short Radius

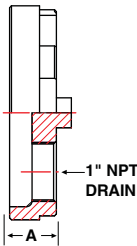
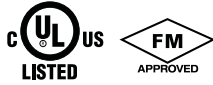
- Ductile Iron - Full Flow



Pipe Size in / mm	Part Number		A in / mm	Case Qty	Weight lb / kg
	Painted	Galvanized			
2 50	65TS3020	66TS3020	2.75 69.9	16	2.1 0.9
2-1/2 65	65TS3024	66TS3024	3.00 76.2	12	2.8 1.3
3 80	65TS3030	66TS3030	3.38 85.9	12	4.1 1.9
4 100	65TS3040	66TS3040	4.00 101.6	8	6.6 3.0
6 150	65TS3060	66TS3060	5.50 139.7	-	11.1 5.0
8 200	65TS3080	66TS3080	6.94 176.3	-	16.8 7.6

Fig. 65DC & 66DC
Drain Cap

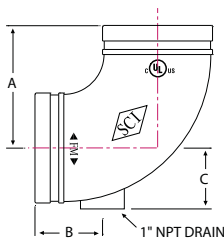
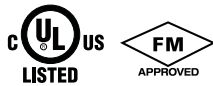
- Ductile Iron
- 1" NPT drain



Pipe Size in / mm	Part Number		A in / mm	Case Qty	Weight lb / kg
	Painted	Galvanized			
2 50	65DC3020	66DC3020	0.88 22.4	80	0.7 0.3
2-1/2 65	65DC3024	66DC3024	0.88 22.4	60	0.8 0.4
3 80	65DC3030	66DC3030	0.88 22.4	40	1.3 0.6
4 100	65DC3040	66DC3040	1.00 25.4	24	2.1 0.9
5 125	65DC3050	66DC3050	1.00 25.4	12	3.5 1.6
6 150	65DC3060	66DC3060	1.00 25.4	10	4.9 2.2
8 200	65DC3080	66DC3080	1.20 30.5	5	10.1 4.6

Fig. 65DE & 66DE
Drain Elbow – Standard Radius

- Ductile Iron - Full Flow
- 1" NPT drain



Pipe Size in / mm	Part Number			Case Qty	Weight lb / kg
	Painted	Galvanized	A		
2 50	65DE3020	66DE3020	3.25 82.6	20	1.8 0.8
2-1/2 65	65DE3024	66DE3024	3.75 95.3	12	2.6 1.2
3 80	65DE3030	66DE3030	4.25 108.0	15	3.7 1.7
4 100	65DE3040	66DE3040	5.00 127.0	8	5.9 2.7
6 150	65DE3060	66DE3060	6.50 165.1	-	13.9 6.3
8 200	65DE3080	66DE3080	7.75 196.9	-	26.6 12.1