

Pipe Size in / mm	Part Number		A in / mm	Case Qty	Weight lb / kg
	Painted	Galvanized			
1-1/4 32	65C 3012	66C 3012	0.88 22.4	200	0.3 0.1
1-1/2 40	65C 3014	66C 3014	0.88 22.4	140	0.4 0.2
2 50	65C 3020	66C 3020	0.88 22.4	80	0.6 0.3
2-1/2 65	65C 3024	66C 3024	0.88 22.4	60	1.0 0.5
3 80	65C 3030	66C 3030	0.88 22.4	40	1.5 0.7
4 100	65C 3040	66C 3040	1.00 25.4	24	2.6 1.2
5 125	65C 3050	66C 3050	1.00 25.4	12	4.0 1.8
6 150	65C 3060	66C 3060	1.00 25.4	10	5.4 2.5
8 200	65C 3080	66C 3080	1.19 30.2	5	11.5 5.2
10 250	65C 3100	66C 3100	1.26 32.0	-	17.7 8.0
12 300	65C 3120	66C 3120	1.26 32.0	-	23.6 10.7

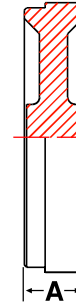
14" through 24" sizes available upon request.

Pipe Size in / mm	Part Number		A in / mm	Case Qty	Weight lb / kg
	Painted				
2 50	65CT3020004		0.88 22.4	80	0.6 0.3
3 80	65CT3030004		0.88 22.4	40	1.5 0.7
4 100	65CT3040004		1.00 25.4	24	2.6 1.2
6 150	65CT3060004		1.00 25.4	10	5.4 2.5
8 200	65CT3080004		1.19 30.2	5	11.5 5.2

Pipe Size in / mm	Part Number		A in / mm	B in / mm	Case Qty	Weight lb / kg
	Painted	Galvanized				
1-1/4 x 1/2 32 x 15	65AE3012004	66AE3012004	1.88 48.0	1.75 44.4	90	0.6 0.3
1-1/4 x 3/4 32 x 20	65AE3012006	66AE3012006	1.88 48.0	1.75 44.5	90	0.6 0.3
1-1/4 x 1 32 x 25	65AE3012010	66AE3012010	2.02 51.3	2.00 50.8	75	0.8 0.3
1-1/2 x 1/2 40 x 15	65AE3014004	66AE3014004	1.88 48.0	1.75 44.4	69	0.6 0.3
1-1/2 x 3/4 40 x 20	65AE3014006	66AE3014006	1.88 48.0	1.75 44.4	69	0.7 0.3
1-1/2 x 1 40 x 25	65AE3014010	66AE3014010	2.02 51.3	2.00 50.8	60	0.8 0.4
2 x 1/2 50 x 15	65AE3020004	66AE3020004	1.88 48.0	1.75 44.4	45	0.8 0.4
2 x 3/4 50 x 20	65AE3020006	66AE3020006	1.88 48.0	1.75 44.4	45	0.9 0.4
2 x 1 50 x 25	65AE3020010	66AE3020010	2.02 51.3	2.00 50.8	45	1.0 0.5
2-1/2 x 1/2 65 x 15	65AE3024004	66AE3024004	1.88 48.0	1.97 50.0	36	1.0 0.5
2-1/2 x 3/4 65 x 20	65AE3024006	66AE3024006	1.88 48.0	1.97 50.0	36	1.1 0.5
2-1/2 x 1 65 x 25	65AE3024010	66AE3024010	2.02 51.3	2.00 50.8	36	1.2 0.5

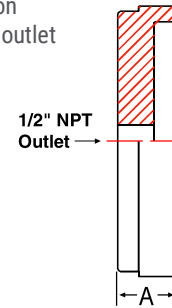
**Fig. 65C & 66C**  
Cap

- Ductile Iron



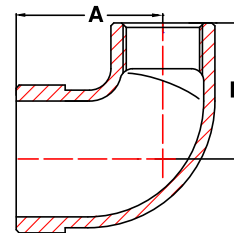
**Fig. 65CT**  
Grooved Cap with Center Tap

- Ductile Iron
- 1/2" NPT outlet



**Fig. 65AE & 66AE**  
Adapter Elbow, Grooved x Threaded

- Ductile Iron - Full Flow
- Threads meet ASME B1.20.1



GROOVED

Please see complete installation instructions at [www.smithcooper.com](http://www.smithcooper.com) for important guidelines and limitations on the use and applications of COOPLOK™ Grooved Couplings and Fittings.