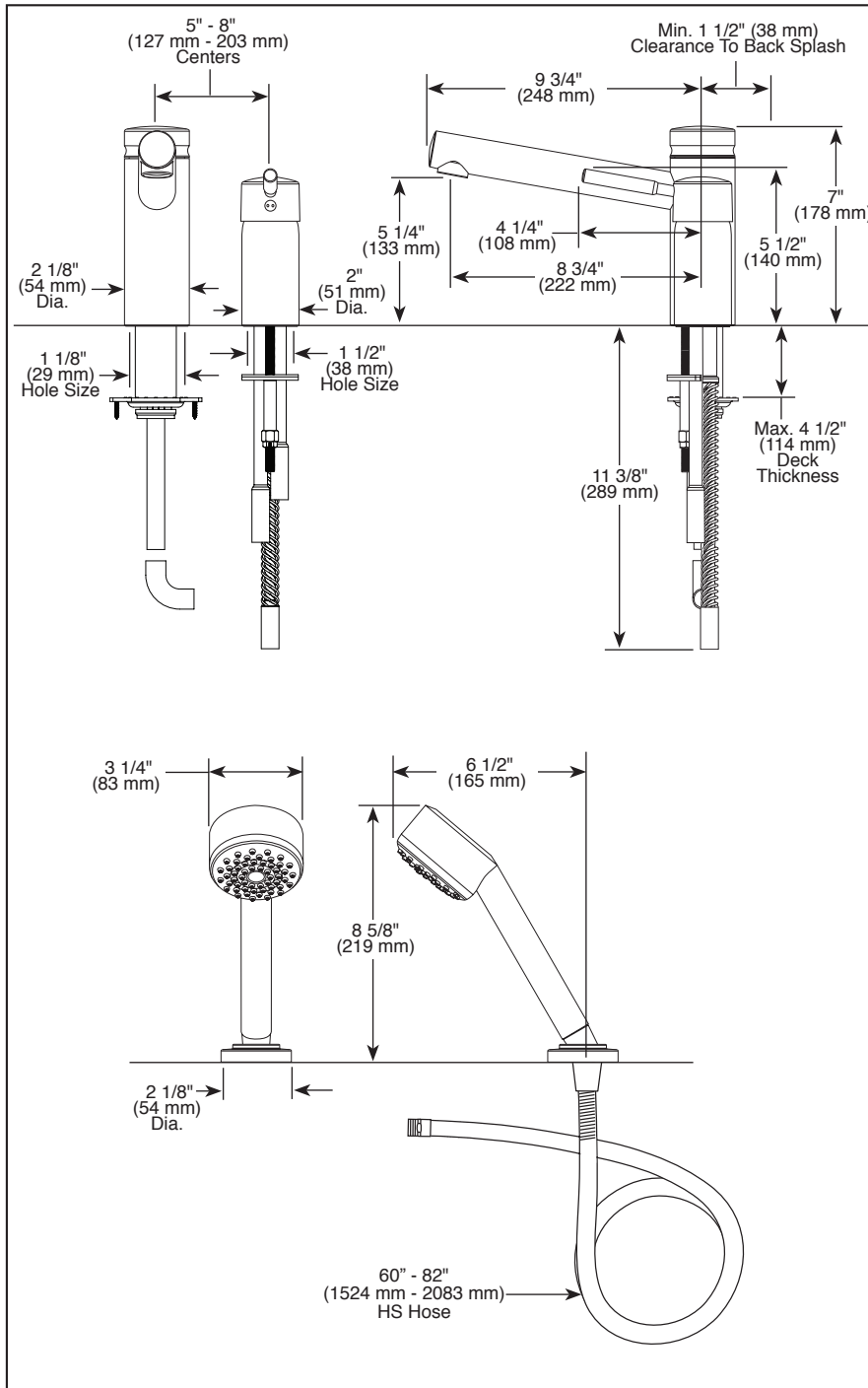


67214▲

Submitted Model No.:

Specific Features:



▲ Designate Proper Finish Suffix

# BRIZO®

## BATH VALVES

- Quiescence® Single Handle Roman Tub Valve
- Three Hole Applications
- Temperature and Volume Controlled with Single Handle
- Hand Held Retractable Shower
- Flexible Ledge Mount

### STANDARD SPECIFICATIONS:

- Three hole mount
- Control mechanism shall be of the rotating ceramic cartridge type
- Temperature and volume controlled with single handle
- Spout with integral diverter, vacuum breaker not required
- Handshower maximum flow rate 1.75 gpm @ 80 psi, 6.6 L/min @ 550 kPa
- Minimum 4 1/2" (114 mm) to maximum 10" (254 mm) distance between holes
- Conventional installation kit adjusts to 4 1/2" maximum deck thickness
- Certified dual check valves

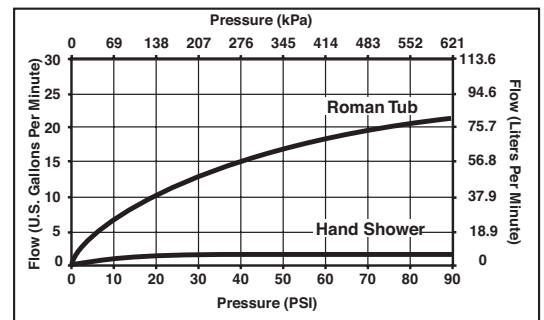
### WARRANTY

- Lifetime limited warranty on parts (other than electronic parts and batteries) and finishes: or, for commercial users, for 5 years from date of purchase.
- 5 year limited warranty on electronic parts (other than batteries); or, for commercial users, for 1 year from the date of purchase. No warranty is provided on batteries.



### COMPLIES WITH:

- ASME A112.18.1 / CSA B125.1
- Indicates compliance to ICC/ANSI A117.1 - Valve control only
- EPA WaterSense® - Applies to handshower only - RP61593\*



Brizo Kitchen & Bath Company reserves the right (1) to make changes in specifications and materials, and (2) to change or discontinue models, both without notice or obligation. Dimensions are for reference only. See current full-line price book or [www.brizo.com](http://www.brizo.com) for finish options and product availability.

BSP-B-67214 Rev. A

**Brizo Kitchen & Bath Company**

55 E. 111th Street, Indianapolis, Indiana 46280  
350 South Edgeware Road, St. Thomas, ON N5P 4L1  
© 2017 Brizo Kitchen & Bath Company