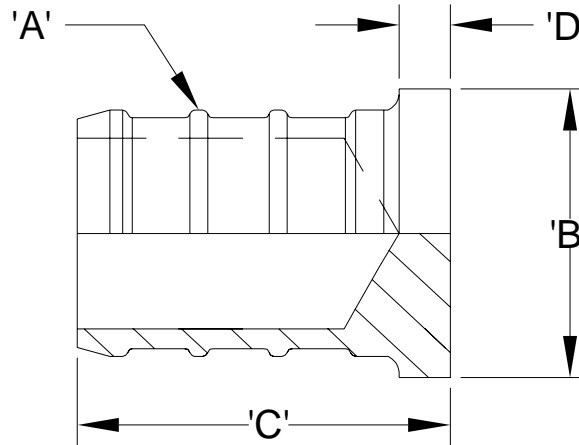




# Zurn PEX® XL-Low Lead Brass Plugs - QQP\_GX Specification Sheet

Tag \_\_\_\_\_

Dimensional Data: Inches and [mm] are subject to manufacturing tolerances and change without notice.



NOTE: Barb geometry will vary depending upon barb size.

Part Number	Description	'A'	'B'	'C'	'D'
QQP2GX	3/8" Barb Plug	3/8" Barb	0.41" [10.4]	0.75" [19.1]	0.13" [3.2]
QQP3GX	1/2" Barb Plug	1/2" Barb	0.56" [14.2]	0.75" [19.1]	0.13" [3.2]
QQP4GX	3/4" Barb Plug	3/4" Barb	0.81" [20.6]	0.75" [19.1]	0.13" [3.2]
QQP5GX	1" Barb Plug	1" Barb	1.00" [25.4]	0.92" [23.4]	0.13" [3.2]
QQP6GX	1-1/4" Barb Plug	1-1/4" Barb	1.38" [35.1]	1.40" [35.6]	0.25" [6.4]
QQP7GX	1-1/2" Barb Plug	1-1/2" Barb	1.63" [41.4]	1.40" [35.6]	0.25" [6.4]
QQP8GX	2" Barb Plug	2" Barb	1.68" [40.7]	1.87" [42.7]	0.37" [9.4]

**Engineering Specification:** Zurn PEX® XL-Low Lead Brass Plug. The QQP\_GX allows for pressure testing of the system or a permanent stop. Manufactured from EcoBrass®, C69300. These fittings, as a system with Zurn PEX® tube, are pressure rated at 160 PSI at 73°F, 100 PSI at 180°F, and 80 PSI at 200°F. These fittings are listed by NSF as complying with the following standards: NSF/ANSI Standard 14, NSF/ANSI Standard 61 including Annex G, ASTM F877, CSA B137.5, and ASTM F1807.

### Accessories

- \_\_\_ QCLP2X 3/8" QuickClamp® Crimp Ring
- \_\_\_ QCLP3X 1/2" QuickClamp® Crimp Ring
- \_\_\_ QCLP4X 3/4" QuickClamp® Crimp Ring
- \_\_\_ QCLP5X 1" QuickClamp® Crimp Ring
- \_\_\_ QCR2X 3/8" Copper Crimp Ring
- \_\_\_ QCR3X 1/2" Copper Crimp Ring
- \_\_\_ QCR4X 3/4" Copper Crimp Ring
- \_\_\_ QCR5X 1" Copper Crimp Ring
- \_\_\_ QCR6X 1-1/4" Copper Crimp Ring
- \_\_\_ QCR7X 1-1/2" Copper Crimp Ring
- \_\_\_ QCR8X 2" Copper Crimp Ring
- \_\_\_ QSOET2X 3/8" Stainless Steel Crimp Ring
- \_\_\_ QSOET3X 1/2" Stainless Steel Crimp Ring
- \_\_\_ QSOET4X 3/4" Stainless Steel Crimp Ring
- \_\_\_ QSOET5X 1" Stainless Steel Crimp Ring

Rev. A	Date: 2/22/10	C.N. No. 110737
Dwg. No. 84400		Prod. No. QQP_GX