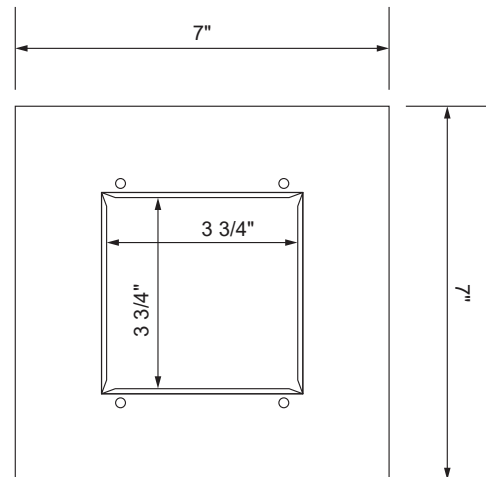
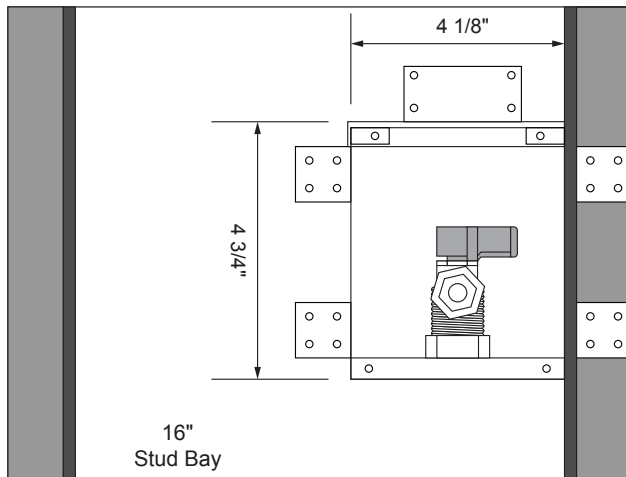




White Powder Coated Ice Maker Outlet Box With Lead Free Hammer Arrester Valves



Specifications:

Furnish and install recessed, white powder coated ice maker outlet box. Ice maker outlet box shall have a brass, quarter turn lead free valve which complies with NSF61/NSF/ANSI 372 and ASME A112.18.1. Valve shall feature white handle and checkmark logo for easy Lead-Free identification. The box and faceplate are 20-gauge steel. Unit shall be Guy Gray™ product code checked below as manufactured by IPS Corporation.

Item #	Product Description	Model #	Units/Case
88133	Brass Qtr Turn Valve, Installed, 1/2" Sweat Conx.	MIB1AB	5
88532	Brass Qtr Turn Valve, Installed, 1/2" CPVC Conx.	MIB2AB	5
88178	Brass Qtr Turn Valve, Installed, 1/2" PEX Conx.	MIB3AB	5
88534	Brass Qtr Turn Valve, Installed, 1/2" Sweat Conx. Contractor Pack	MIB4AB	10
88535	Brass Qtr Turn Valve, Installed, 1/2" Wirsbo Conx.	MIB5AB	5



500 Distribution Parkway, Collierville, TN 38017 • Phone: 800-888-8312 • Fax: 901-853-5008 • www.ipscorp.com