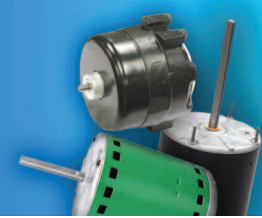


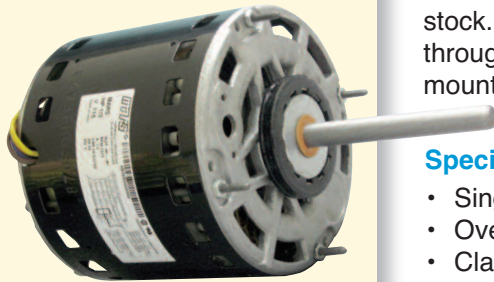
Multi-Horsepower Motors

5 1/2 inch dia. MARS SERIES 113



Multi-Horsepower Direct Drive Furnace Blower Motors

MARS Brand multi-horsepower direct drive blower motors are ideal for truck stock. Four models cover both 115 volt and 208-230 volt applications from 1/6 through 3/4 HP. All MARS brand multi-horsepower motors feature Rheem shell mounting holes.

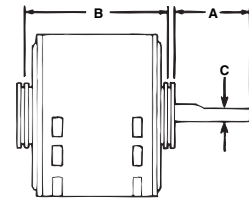


Specifications:

- Single phase, 60 Hz
- Overload protection
- Class B insulation

Features:

- 2-1/2 inch resilient rings
- Reversible rotation



Cross Reference

MARS #	GE	AO Smith	Emerson	Fasco	Marathon	Wagner	YORK Source 1	Rheem/Ruud Prostock	Carrier/Totaline RCD	Nordyne Partners Choice
10463	3463	FDL6001	5460	D2835	X077	WG840463	S1-FHM3463	51-23012-41	P257-E5460	01-0698
10464	3464	FD6000	5461	D833	X073	WG840464	S1-FHM3464	51-23022-41	P257-E5461	01-0699
10466	3466	FDL6002	5470	D2832	X074	WG840466	S1-FHM3466		P257-E5470	01-0702
10467	3467	FD6001	5471	D2833	X075	WG840467	S1-FHM3467		P257-E5471	01-0701

1075 RPM - Four Speed

MARS NO.	HP	ROT	Voltage	Encl.	Brg.	DIMENSIONS			Lead Lengths
						A	B	C	
10463	1/6 - 1/2	Rev	115	OAO	Slv	5.00	4.73	1/2	41.53"
10464	1/6 - 1/2	Rev	230	OAO	Slv	5.00	4.73	1/2	41"
10466	1/5 - 3/4	Rev	115	OAO	Ball	5.25	5.73	1/2	41"
10467	1/5 - 3/4	Rev	230	OAO	Ball	5.00	5.23	1/2	40.75"



Multi-Horsepower Condenser Fan Motors

MARS Brand multi-horsepower condenser fan motors are ideal for truck stock. Three 1075 RPM models cover 208-230 volt applications from 1/6 to 1/2 HP.

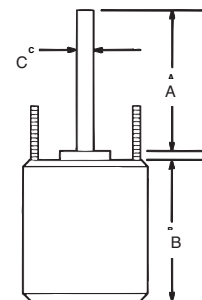
All MARS brand multi-horsepower motors feature Rheem shell mounting holes.

Specifications:

- Single phase, 60 Hz
- Overload protection
- Class B insulation

Features:

- Thru bolt or band mounting
- Water slinger on shaft
- Air conditioning or heat pump duty



Cross Reference

MARS #	GE	AO Smith	Emerson	Fasco	Marathon	Wagner	YORK Source 1	Rheem/Ruud Prostock	Carrier/Totaline RCD	Nordyne Partners Choice
10458	3458	ORM5458	5458							
10459	3459	ORM5488B	5464							
10465	3465	FE6000	5462	D2827	X072	WG840465	S1-FHM3465	51-20354-11	P257-E5462	01-0695
10468	3468	FE6002	5465		X076	WG840468	S1-FHM3468		P257-E5465	01-0697
10469	3469	FE6001	5464	D2826		WG840469	S1-FHM3469	51-20760-11	P257-E5464	01-0696

MARS NO.	HP	ROT	RPM/Sp.	Voltage	Encl.	Brg.	DIMENSIONS			Lead Lengths
							A	B	C	
The Wiz 10458	1/6 - 1/3	Rev	1075	208-230	TEAO	Ball	6.50	3.82	1/2	36"
10459	1/8 - 1/3	Rev	825	208-230	TEAO	Ball	6.50	5.48	1/2	36"
10465	1/6 - 1/3	Rev	1075/2	208-230	TEAO	Ball	5.00	4.73	1/2	38"
10468	1/5 - 1/2	Rev	1075/2	208-230	TEAO	Ball	5.00	5.48	1/2	38"
10469	1/6 - 1/3	Rev	825/2	208-230	TEAO	Ball	5.00	5.48	1/2	42"