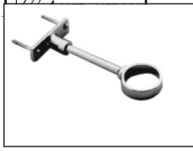


F414-3**FLUSHBOY****WATER SAVER FLUSH VALVE**
(3.5gpf / 13.2 Lpf Per Flush)

Polished chrome plated flush valve, chloramine resistant diaphragm, 3.5 gallons per flush, externally adjustable, with 1" vandle resistant capped screwdriver angle stop with back-check, renewable main valve seat, ADA compliant metal "Rubberflex" oscillating handle, "Turn-to-Silence" equipment, with "Kwikfit" threaded union tailpiece, vacuum breaker, wall flange, spud nut and spud flange for



T36—Solid ring wall support for flush connection



T46—Split ring wall support for flush connection

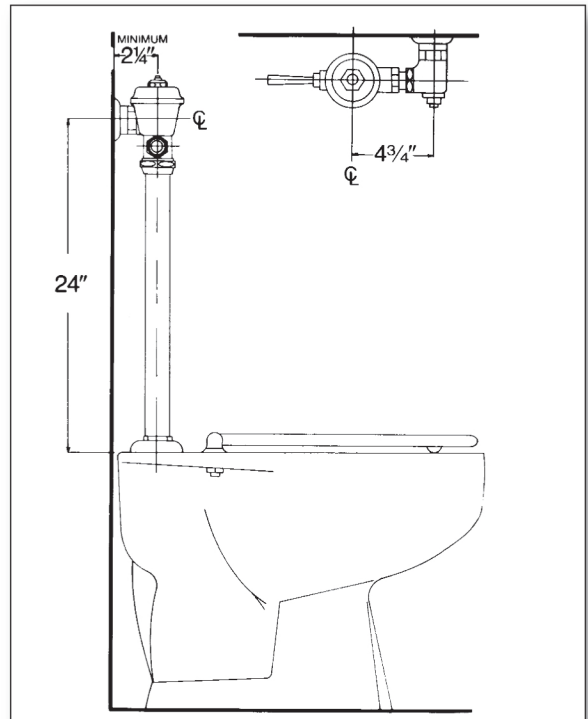


Variations

- E – One wall bumper (for seat with cover or closed front seat without cover)
- F – Two wall bumpers (for open front seat without cover)
- L – Handle or push-button on front of valve
- T6 – Heavy cast wall flange with allen head set screw
- T36 – Solid ring wall support for flush connection
- T42 – Sweat adapter kit for stop
- T46 – Split ring wall support for flush connection
- T106 –Mashaerator self cleaning bypass diaphragm

Remarks

***** *For use with 3.5 gallons water saver water closet*



P.O. Box 411 · Charlottesville · VA · 22902 · USA
 Phone: (434) 296-0166 · Fax (434) 977-3596
 Email: info@delanyproducts.com
 Web: www.delanyproducts.com
 ©2014

