



Two Handle Shower Fittings

**Features:**

- Compression stems
- Body cast of high copper content brass
- By-Pass valve body complete with integral stops available
- Exposed parts have heavy chrome plated finish
- Working parts can be easily replaced
- 2.5 gpm (9.5 L/min) maximum showerhead @ 80 psi
- 1/2" I.P.S. or 1/2" nominal copper sweat connections
- 8" centers with sliding sleeve escutcheons or threaded escutcheons
- ADA compliant metal handles operate with less than 5 lbs. of force
- Brass plug for tub filler outlet

Standards & Certifications:

- ANSI/ASME A112.18.1M
- ANSI A117.1 (ADA)
- CSA B125

Catalog Numbers:

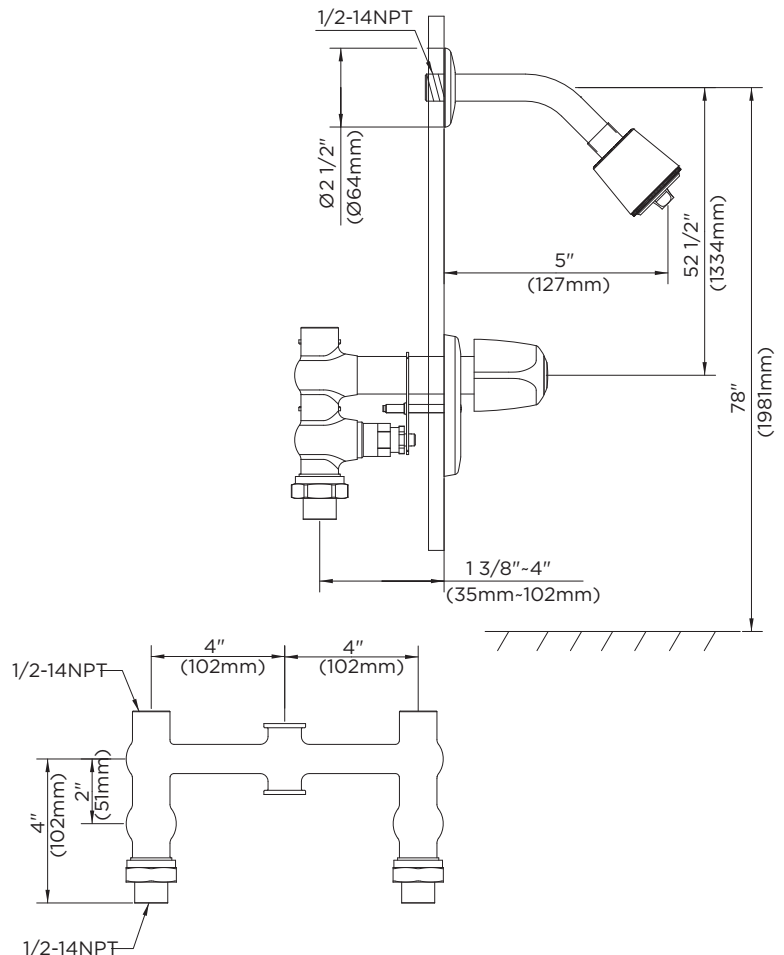
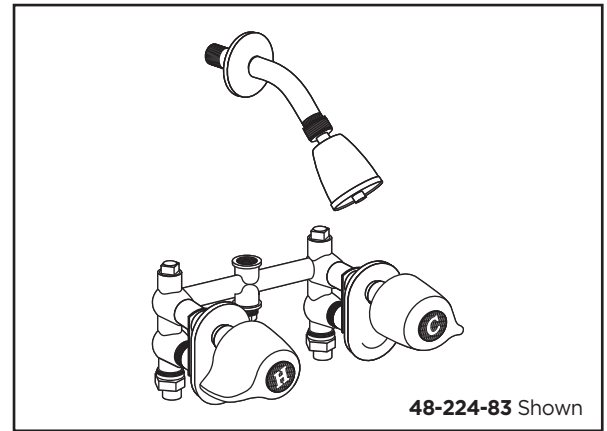
48-220	IPS/Sweat (Chrome), Metal Handles
07-48-220	IPS/Sweat (Chrome), Metal Fluted Handles
48-221	Sweat (Chrome), Metal Handles
07-48-221	Sweat (Chrome), Metal Fluted Handles
48-220-83	IPS/Sweat (Chrome), Metal Handles
07-48-220-83	IPS/Sweat (Chrome), Metal Fluted Handles
48-221-83	Sweat (Chrome), Metal Handles
07-48-221-83	Sweat (Chrome), Metal Fluted Handles
48-224-83	IPS/Sweat (Chrome), Metal Handles

Prefixes Available:

07- Metal Fluted Handles

Suffixes Available:

-83 Sliding Sleeve Escutcheon



Job Name	
Date	
Model Specified	
Quantity	
Customer	
Contractor	
Architect/engineer	