

# Forged Carbon Steel Socket Weld Fittings

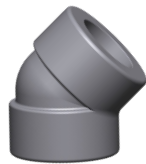
ASTM A105, ASME B16.11

**CAPITOL**  
manufacturing



## 90° Socket Weld Elbows

1/8" to 4" Class 3000  
1/8" to 4" Class 6000  
1/4" to 3" Class 9000



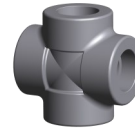
## 45° Socket Weld Elbows

1/8" to 4" Class 3000  
1/8" to 3" Class 6000  
1/4" to 2 1/2" Class 9000



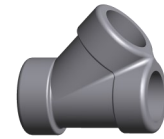
## Socket Weld TEES

1/8" to 4" Class 3000  
1/8" to 4" Class 6000  
1/4" to 2" Class 9000



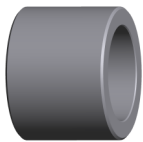
## Socket Weld Crosses

1/8" to 4" Class 3000  
1/2" to 2" Class 6000



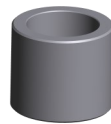
## Socket Weld Laterals

1/2" to 2" Class 3000  
1/2" to 2" Class 6000  
3/4" to 1 1/2" Class 9000



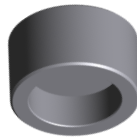
## Socket Weld Couplings

1/8" to 4" Class 3000  
1/8" to 4" Class 6000  
1/4" to 2" Class 9000



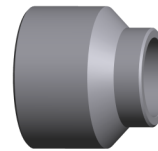
## Socket Weld Half Couplings

1/8" to 4" Class 3000  
1/8" to 4" Class 6000  
1/2" to 2" Class 9000



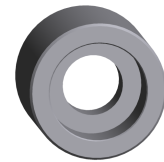
## Socket Weld Pipe Caps

1/8" to 4" Class 3000  
1/8" to 4" Class 6000  
1/2" to 2" Class 9000



## Socket Weld Couplets

1/8" to 4" Class 3000  
1/8" to 3" Class 6000



## Socket Weld Reducing Couplings

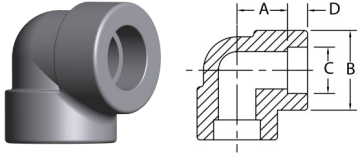
1/4" to 4" Class 3000  
1/4" to 4" Class 6000  
1/4" to 2 1/2" Class 9000

# Class 3000 Forged Carbon Steel Socket Weld Fittings

ASTM A105, ASME B16.11

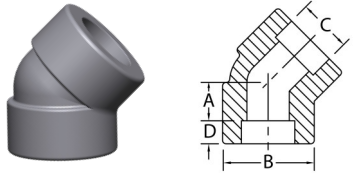
## Common Dimensions

Pipe Size	1/8	1/4	3/8	1/2	3/4	1	1-1/4	1-1/2	2	2-1/2	3	4
<b>C</b>	0.420/ 0.440	0.555/ 0.575	0.690/ 0.710	0.855/ 0.875	1.065/ 1.085	1.330/ 1.350	1.675/ 1.695	1.915/ 1.935	2.406/ 2.426	2.906/ 2.931	3.535/ 3.560	4.545/ 4.570
<b>D</b>	0.380	0.380	0.380	0.380	0.500	0.500	0.500	0.500	0.620	0.620	0.620	0.750



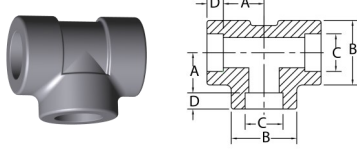
## 90 Degree Elbows

Pipe Size	1/8	1/4	3/8	1/2	3/4	1	1-1/4	1-1/2	2	2-1/2	3	4
<b>A</b>	0.440	0.440	0.530	0.620	0.750	0.880	1.060	1.250	1.500	1.620	2.250	2.620
<b>B</b>	0.880	0.880	1.040	1.310	1.500	1.810	2.250	2.500	3.030	3.690	4.380	5.750
<b>Wt. Ea.</b>	0.20	0.16	0.25	0.48	0.68	1.06	1.59	2.13	3.78	6.74	10.94	24.13



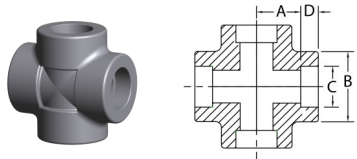
## 45 Degree Elbows

Pipe Size	1/8	1/4	3/8	1/2	3/4	1	1-1/4	1-1/2	2	2-1/2	3	4
<b>A</b>	0.310	0.310	0.310	0.440	0.500	0.560	0.690	0.810	1.000	1.120	1.250	1.620
<b>B</b>	0.880	0.880	1.040	1.310	1.500	1.810	2.250	2.500	3.030	3.680	4.370	6.000
<b>Wt. Ea.</b>	0.15	0.13	0.20	0.43	0.58	0.89	1.40	1.70	2.69	7.88	11.25	20.75



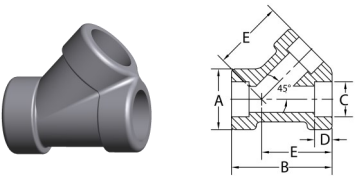
## Tees

Pipe Size	1/8	1/4	3/8	1/2	3/4	1	1-1/4	1-1/2	2	2-1/2	3	4
<b>A</b>	0.440	0.440	0.530	0.620	0.750	0.880	1.060	1.250	1.500	1.620	2.250	2.620
<b>B</b>	0.880	0.880	1.040	1.310	1.500	1.810	2.250	2.500	3.030	3.690	4.380	5.750
<b>Wt. Ea.</b>	0.23	0.19	0.33	0.71	0.87	1.44	2.19	2.98	4.57	8.60	13.00	31.30



## Crosses

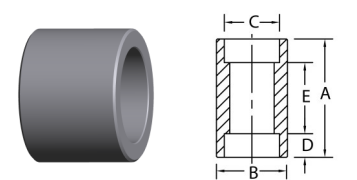
Pipe Size	1/8	1/4	3/8	1/2	3/4	1	1-1/4	1-1/2	2	2-1/2	3	4
<b>A</b>	0.530	0.530	0.530	0.620	0.750	0.880	1.060	1.250	1.500	1.620	2.250	2.620
<b>B</b>	1.040	1.040	1.040	1.310	1.500	1.810	2.250	2.500	3.030	4.000	4.750	6.000
<b>Wt. Ea.</b>	0.57	0.51	0.39	0.83	1.03	1.68	2.56	3.46	5.60	13.70	21.10	35.00



## Laterals

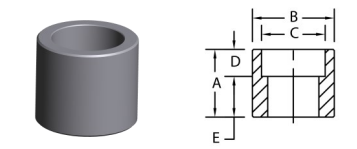
Laterals not covered by ASME B16.11

Pipe Size	1/8	1/4	3/8	1/2	3/4	1	1-1/4	1-1/2	2	2-1/2	3	4
<b>A</b>				1.500	1.750	2.219	2.219	2.500	3.030			
<b>B</b>				2.500	3.000	4.813	4.813	5.375	6.438			
<b>E</b>				1.750	2.125	3.500	3.500	3.938	4.750			
<b>Wt. Ea.</b>				0.90	1.40	2.55	2.80	4.13	6.29			



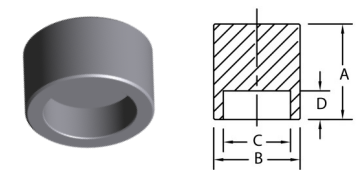
## Couplings

Pipe Size	1/8	1/4	3/8	1/2	3/4	1	1-1/4	1-1/2	2	2-1/2	3	4
<b>A</b>	1.025	1.025	1.085	1.245	1.335	1.415	1.415	1.415	1.905	1.865	1.865	2.125
<b>B</b>	0.750	0.875	1.063	1.250	1.500	1.875	2.250	2.500	3.000	3.625	4.312	5.500
<b>E</b>	0.250	0.250	0.250	0.380	0.380	0.500	0.500	0.500	0.750	0.750	0.750	0.750
<b>Wt. Ea.</b>	0.09	0.11	0.16	0.29	0.42	0.59	1.07	1.30	2.13	3.14	4.14	7.30



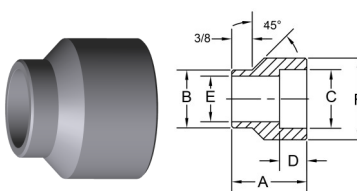
## Half Couplings

Pipe Size	1/8	1/4	3/8	1/2	3/4	1	1-1/4	1-1/2	2	2-1/2	3	4
<b>A</b>	1.025	1.025	1.085	1.245	1.425	1.585	1.655	1.715	2.205	2.255	2.315	2.575
<b>B</b>	0.750	0.875	1.063	1.250	1.500	1.875	2.250	2.500	3.000	3.625	4.312	5.500
<b>E</b>	0.620	0.620	0.690	0.880	0.940	1.120	1.190	1.250	1.620	1.690	1.750	1.880
<b>Wt. Ea.</b>	0.09	0.11	0.16	0.29	0.42	0.59	1.07	1.30	2.13	3.14	4.14	7.30



## Pipe Caps

Pipe Size	1/8	1/4	3/8	1/2	3/4	1	1-1/4	1-1/2	2	2-1/2	3	4
<b>A</b>	0.705	0.705	0.705	0.765	0.875	1.045	1.045	1.105	1.265	1.395	1.515	1.765
<b>B</b>	0.750	0.875	1.062	1.250	1.500	1.875	2.250	2.500	3.000	3.625	4.312	5.500
<b>Wt. Ea.</b>	0.07	0.09	0.12	0.22	0.36	0.48	0.91	1.30	1.88	2.74	4.27	7.40



## Couplets

Pipe Size	1/8	1/4	3/8	1/2	3/4	1	1-1/4	1-1/2	2	2-1/2	3	4
<b>A</b>	1.188	1.190	1.190	1.310	1.380	1.690	1.880	2.000	2.250	2.500	2.750	3.000
<b>B</b>	0.562	0.688	0.813	0.938	1.063	1.313	1.688	1.938	2.438	2.875	3.500	4.500
<b>E</b>	0.269	0.364	0.493	0.622	0.824	1.049	1.380	1.610	2.067	2.469	3.068	4.026
<b>F</b>	0.875	0.940	1.060	1.310	1.500	1.810	2.190	2.500	3.130	3.630	4.380	5.560
<b>Wt. Ea.</b>	0.25	0.30	0.35	0.50	0.26	0.85	1.07	1.30	2.13	3.14	4.14	7.30