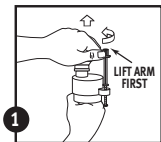
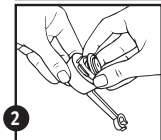


FOR FLUIDMASTER PRO FILL VALVES.

INSTALLATION INSTRUCTIONS:



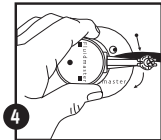
1. Turn off water supply. Lift arm on PRO45 cap (top valve). Grip body under float (shaft), slide hand up pushing float up. Place thumb on lever arm and hand on cap. Rotate arm and cap 1/8 turn counterclockwise. Unhook plastic screw.



2. Remove old seal and replace.



3. Hold a cup over opening, turn water supply on and off to clear out debris in supply line. Turn off water supply.
4. To reassemble, engage lugs, rotate 1/8 turn clockwise to stop. **BE SURE UPPER CAP IS FULLY TURNED TO THE STOP.**



NOTE: If your valve is older than 5 years, or if you do not know how old the valve is, or if in-tank bowl cleaners containing bleach or chlorine may have been used while the valve was in service, Fluidmaster recommends replacing the valve, not repairing the seal or cap. **WARNING:** Use of in-tank toilet bowl cleaners will: (1) RESULT IN DAMAGE to tank components and MAY CAUSE FLOODING and PROPERTY DAMAGE and (2) VOID FLUIDMASTER WARRANTY. Use only genuine Fluidmaster replacement parts. Use of non-Fluidmaster replacement parts will void the warranty on the Fluidmaster valve.