

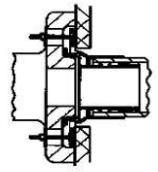
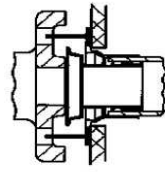
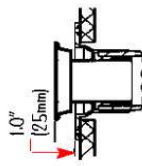
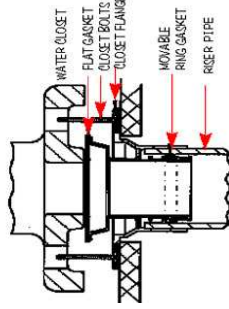
ULTRASEAL

WATER CLOSET CONNECTOR



Four
Progressively
Deeper
Grooves
accommodates
different piping
materials.

PREDCO



Put O-ring in proper groove to insure a tight fit

Lubricate the lower gasket & inside of drain pipe (dish soap or WD40 work well)

Insert UltraSeal with a twisting motion into the drain pipe through the closet flange

Leave UltraSeal about 1" above the floor level

Install the floor bolt as usual

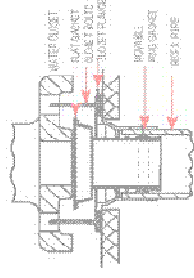
PREDCO 2009 PRODUCT CATALOG

CONNECT WITH PREDCO

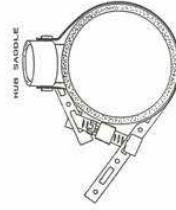
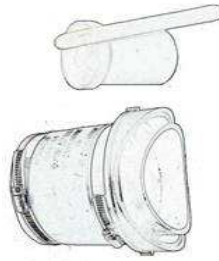
INNOVATIVE SEWER CONNECTIONS

Since 1974

- Mechanical Water Closet Connectors
- Precision Sewer Hole Cutting Equipment



- Sewer Tap Saddles
- Exothermic Epoxies
- Stabilizing Saddle Bands



PHONE: 800 323-6188
FAX: 800 323-6189
WEB SITE: PLUMB-BOB.COM
E-MAIL: PREDCO@PLUMB-BOB.COM

TABLE OF CONTENTS

PREDCO sewer tap system and specification 3

Air power tap unit 4

Electric power tap unit 5

Diamond tip shell cutters 6

Carbide tip shell cutters 7

Replacement and optional parts 8-10

PREDCO sewer tap saddles specifications 11

Sewer tap saddles, connectors, saddle bands 12-13

Epoxy, spatulas 14

UltraSeal water closet connectors 15-16

Disclaimer: Items not to scale

ULTRASEAL

WATER CLOSET CONNECTOR

UltraSeal connects the water closet to the drainage system with a gas and air tight seal that will not leak from pipe or fixture movement. Withstands plunger pressure. For floor outlet and wall-hung closets. Seals closet flanges below floor level and are reusable.



FEATURES

- Reliable PVC construction
- Life time warranty against manufacturer defects
- Gas and water tight
- Flexible - accommodates fixture, piping and floor movement
- Easy to install - No special tools required
- Works on cast iron soil pipe, plastic, copper, and steel
- Endures heat from radiant flooring
- Will seal to closet flanges below floor level
- Reusable
- Will not stain floor or floor covering
- Will not restrict flow and works well with 1.6 gallon flush toilets
- Code compliant
- Two sizes - 3" for 3" toilet risers and 4" for 4" toilet risers
- The "Three Plus" for when your not sure





PREDCO Sewer Tap Systems
Cut precision holes and make secure permanent branch connections, eliminating ground water infiltration and root-growth penetration in sewer mains.



PREDCO SEWER TAP SYSTEMS

- Designed to tap all piping materials commonly used in sewer systems
- Quick and portable units designed for one person operation
- Efficient operation no disruption to pipe or pipe bedding
- Proven reliable by many years of field use
- Machine cut holes sized for Fast-Fit sewer saddles

SEWER TAP HOLE SPECIFICATION: Sewer taps shall be made to ensure a flexible, watertight connection between the sewer main or collection system sewer and the building. The hole in the sewer main, to receive the tap saddle, shall be made using non-impact rotary equipment using diamond or carbide tipped cutting drills. The tapping machine shall be capable of cutting holes, sized to receive a sewer saddle, in concrete, vitrified clay, cast iron, ductile iron, PVC, and ABS, plastic, A/C and fiberglass pipe without tunneling or disruption of the pipe bedding, equal to the tapping machine systems manufactured by Plumbing Research Engineering and Development Company

TWO - PART EXOTHERMIC EPOXY KITS

Adheres tap saddles to clay, concrete, ductile iron, PVC, ABS, A/C, and fiberglass pipe.

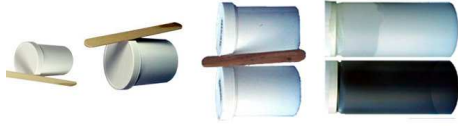
PART#

PE44: 4 ounces of resin and 4 ounces of hardener
— in one jar

PLE88: 8 ounces of resin and 8 ounces of hardener
— in one jar

PXLE1616: 16 ounces of resin and 16 ounces of hardener
— in two separate jars

PSSE3232: 32 ounces of resin and 32 ounces of hardener
— in two separate jars



EPOXY MIXING SPATULAS

One reusable EMS-HDPE comes with every 6 epoxy kits purchased. Additional or stainless steel spatula available.

PART#

EMS-HDPE: Reusable economical plastic.

EMS-T 6x2: Reusable Stainless steel spatula with wood handle.

EMS-Sq 7½x3: Reusable Stainless steel spatula with wood handle, fits in large jars.



EPOXY STICKS

Extruded equal parts of resin and hardener. Break off amount needed and mix in hand. Adheres to many surfaces such as metal, wood, plastic, glass, ceramic and many other materials.

PES3.5 - 3½" stick

PES7.0 - 7" stick



AIR POWERED SEWER TAP UNIT



- **PERSION CUT HOLES IN CLAY CONCRETE DUCTILE IRON, PVC, A/C, & FIBERGLASS SEWER PIPE**
 - **ALL DIRECTIONAL DRILLING**
- A3000 AIR POWERED SEWER TAP UNIT**

Features:

- All directional drilling
- Spindle speed approx. 500 RPM
- Air consumption at Max 80 CFM at 100 psi
- Hole cutter adapter and shaft coupling
- Sturdy transport case
- Filter/Regulator/Lubricator
- 1 Quart lubrication oil
- Hoses to connect regulator to machine
- Easy Set Platform Guide
- Accommodates cutter up to 12"

PREDCO SPIGOT TAP SADDLE WITH SHIELDED COUPLING



1056 series couplings fit Schedule 40 or SDR35 pipe. Other size coupling available upon request.

4" SPIGOT TAP SADDLE WITH SHIELDED COUPLING

PART #

STS4/E/1056-44RC-Spigot saddle 4", epoxy , shielded coupling

STS4/LE/1056-44RC-Spigot saddle 4", large epoxy , shielded coupling

6" SPIGOT TAP SADDLE WITH SHIELDED COUPLING

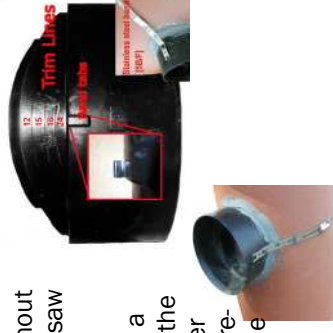
PART #

STS6/LE/1056-66RC-Spigot saddle 6", large epoxy , shielded coupling

STS6/XLE/1056-66RC-Spigot saddle 6", extra large epoxy, shielded coupling

PREDCO "Fast Fit" saddles fit 8" pipes without trimming. To attach larger pipe trim with a saw or wrap to fit the contour.

Mix the two part epoxy until the material is a consistent gray color. Fill the cavity, place the saddle into the predrilled hole in your sewer pipe so the curvature wraps the pipe. The remaining epoxy can be smoothed around the perimeter of the saddle.



STABILIZING SADDLE BANDS

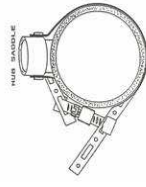
ADDS STABILITY DURING BACK

FILLING OPERATION

5B/F Five feet of stainless steel strapping and fastener.

22B/F Twenty two feet of stainless steel strapping and fastener.

Attaches to tabs on side of tap saddle. Nut driver or flathead screw driver needed to tighten. Also requires tunneling around pipe.



TO ORDER CALL: 800.323.6188

PREDCO HUB TAP SADDLES

4" HUB TAP SADDLE (CONNECT WITH DONUT)

PART #

HTS4/E - Hub saddle 4", epoxy

HTS4/LE - Hub saddle 4", large epoxy

6" HUB TAP SADDLE

PART #

HTS6/LE - Hub saddle 6", large epoxy

HTS6/XLE - Hub saddle 6", extra large epoxy



FERNCO DONUTS

DWV Schedule 40

4"- 490-405

6"- 614-605

S&D SDR 35

4"- 490-401

6"- 614-601

All Fernco products available



PREDCO SPIGOT TAP SADDLE WITH COUPLING

1056 series couplings fit Schedule 40 or SDR35 pipe. Other size coupling available upon request.



4" SPIGOT TAP SADDLE

PART #

STS4/E/1056-44 - Spigot saddle 4", epoxy, coupling

STS4/LE/1056-44 - Spigot saddle 4", large epoxy, coupling

6" SPIGOT TAP SADDLE

PART #

STS6/LE/1056-66 - Spigot saddle 6", large epoxy, coupling

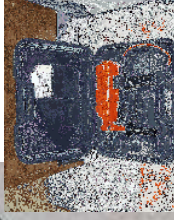
STS6/XLE/1056-66 - Spigot saddle 6", extra large epoxy, coupling

PREDCO

ELECTRIC POWERED SEWER TAP UNIT



Electric units are recommended for cutters up to 6.5" in diameter.



- **PERSION CUT HOLES IN CLAY CONCRETE DUCTILE IRON, PVC, A/C, & FIBERGLASS SEWER PIPE**
- **ALL DIRECTIONAL DRILLING**

ELECTRIC POWERED SEWER TAP UNIT MODEL E1200 & E1600 include: Power unit, Sturdy transport case, Water connection, Easy Set Platform Guide, and (2nd) In-line surge protector.

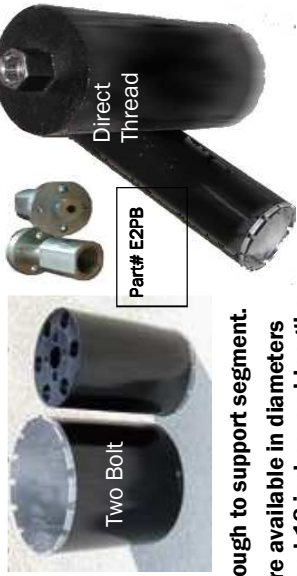
	E1200	E1600
Power Unit Weight-Ship Weight	13 lbs/5.9kg—56 lbs/25.4kg	13 lbs/5.9kg—56 lbs/25.4kg
Safety Features		With Intellitronik™ inside Slow start & instant restart
Electronic Overload Protection	no	yes
(2nd) In-line surge protector	yes	yes
Rated Voltage	110 V	110 V
Rated Current	14 A	18 A
Power Input	1600 W	1600 W
Power Output	1080 W	1080 W
Frequency	50-60 Hz	50-60 Hz
Gear Box	3-speed	3-speed
RPMs	580/1400/2900	580/1200/2520

CUTTERS PURCHASE · USE · MAINTENANCE

DIAMOND TIPPED SHELL CUTTER

Diamond impregnated laser welded segments cut precision holes in: clay, concrete and ductile iron sewer pipe.

Flowing water is require during the cut to cool the segments and adds to the life of the cutter. Drilling slurry should be the color of coffee with cream to expose more diamond. Too much or not enough water will cause segment to glaze over and appear dull. They can be refreshed by spinning them in sharp sand or filing tips to expose new diamonds.



Segments can be replaced if missing or completely worn down but the tube must be round and thick enough to support segment.

Diamond cutters are available in diameters between 4 inches and 18 inches, and lengths up to 12" to accommodate the thickness of various piping materials.

Diamond Cutter Diameters	Two bolt	Direct thread	6 1/4" OAL	8" OAL	12" OAL	Other OAL	Air	Gas	Electric
4 1/2" DTSC	✓		1080	1088	1012	10XX	✓	✓	With E2PB
4 1/2" DTSC		✓	E4500	E4508	E4512	E45XX			✓
5" DTSC	✓		5000	5008	5012	50xx	✓	✓	With E2PB
5 1/2" DTSC	✓		5500	5508	5512		✓	✓	With E2PB
6 1/2" DTSC	✓		1100	1108	1112		✓	✓	With E2PB
6 1/2" DTSC		✓	E6500	E6508	E6512				✓
7" DTSC	✓		7000	7008	7012		✓	✓	
7 1/2" DTSC	✓		7500	7508	7512		✓	✓	
Pilot-adapters									
5/8" DTPG	✓		1040R		1040L		✓	✓	
E2PB		✓							✓
E2PG		✓							✓
E2PB+PG		✓							✓

PREDCO SEWER TAP SADDLES

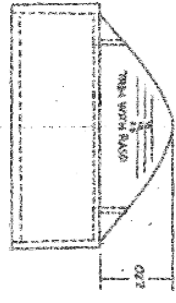
PREDCO Sewer Tap Saddles molded in hardened PVC attach to clay, concrete, ductile iron, PVC, ABS, A/C, and fiberglass sewer mains with PREDCO two-part exothermic epoxy.



Complies with ASTM D2680-D2751

- 4 inch and 6 inch sizes
 - Hub style saddle — connect with donut
 - Spigot style saddle — connect with coupling
 - available with optional stainless steel shielded coupling
- The full line of Fernco connectors are also available

SEWER TAP SADDLE SPECIFICATION: The tap saddle shall be of a design that is attached to the sewer main with a fast curing, exothermic epoxy that can be used in wet or dry conditions. No part of the tap saddle shall protrude into the bore or waterway of the pipe. The saddle shall be manufactured of a material that is designed for sewer service. The saddle shall be of the design that will accommodate the connection of branch using piping material of PVC, ABS, cast iron, vitrified clay, concrete or A/C with a fitting of the compression, mechanical or sealing type. The tap saddle shall be equal to the saddles manufactured by Plumbing Research Engineering and Development Company



HORIZONTAL GUIDES (CARBIDE)

To support cutter when drilling horizontally.

1. Drill pilot hole in pipe
2. Insert stem of horizontal guide into pilot hole
3. Place cutter shell around guide & cut hole



Part#
#HGC4
#HGC6

PORTABLE WATER TANK

When running water is not available on the site 3½ Gallon portable water tank with 10' hose and connector.

Part# **WT10H** Water Tank with Hose

Available with longer hose upon request



SHARPENING POT & SAND

Keep diamond tip shell cutter, up to 8" OD, sharp. Spin the shell cutter in this heavy cast pot filled with special sand that will expose new diamond and improve the performance of segments that are glazed over.

Part# **SPS100**



CARBIDE TIPPED SHELL CUTTER

CARBIDE CUTS HOLES IN A/C,PVC & FIBERGLASS PIPE

Carbide cutters—cut dry

Cutter Includes:

- shell cutter
- 1/2" shank arbor
- pilot drill & allen wrench



Part #

CT1110 4½" Cutter

CT1120 6½" Cutter

GC100 ½" Gear Chuck & key

Gear chuck and adapter are needed to attach carbide cutters to all types of power units.



To connect carbide cutter to Electric Unit, Gear chuck and E2GC are needed for connection.

Part # **E2GC** Adapter
 (electric units) threads to electric power unit and gear chuck.

E2GC Adapter

Gear Chuck



Part# **GC100** ½" Gear
 Chuck & key

To connect carbide cutter to Air or Gas units, Gear chuck threads to Shaft Coupling

Part# **A3004** SHAFT COUPLING
 (HCA is removed and replaced with Gear chuck)

Part# **GC100** ½" Gear Chuck & key



EASY SET PLATFORM GUIDE



The self clamping platform, removable center plate, guides 4½" and 6½" cutters for percussion cut holes in pipe up to 22" O.D. For pipe larger than 22" O.D., PREDCO offers a diamond tipped pilot guide system.

Part# ESPG EasySet Platform Guide

PILOT GUIDE ADAPTER

Drill horizontally or for larger diameter holes than the E-Z set will accommodate.

Part# E2PG Pilot guide adapter threads into E series shell cutter (inside hub) and receives the 5/8" pilot guide. (1040R or L-DTPG sold separately)



Part# E2PB Threads onto electric unit and bolts to the two bolt pattern cutters. (looks similar to E2PB+PG)



Part# E2PB+PG Threads onto the electric unit and bolts to the two bolt pattern cutters and accepts the 5/8" Diamond Tipped Pilot Guide. (looks similar to E2PB)

PILOT GUIDES

Diamond Tipped Pilot Guides [DTPG] direct cooling water to the diamond impregnated segments while cutting a pilot hole and support the shell cutter until it begins to cut. Once the cutter has grooved the pipe, remove the DTPG and resume cutting. Be sure to rinse the spring tip.

1040L 5/8" Diamond Tip Pilot Guide (14")

OSPSL Pilot Support Shaft (14")

1040R 5/8" Diamond Tip Pilot Guide (9")

OSPSR Pilot Support Shaft (9")

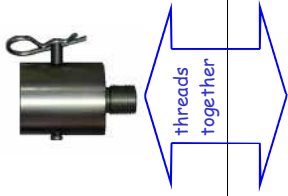
1051 Replacement Spring & Tip for DTPG



SHAFT COUPLING

Connects Air/Gas unit to the Hole Cutter Adapter. Shaft coupling includes the clevis pin and cotter pin.

PART# A3004

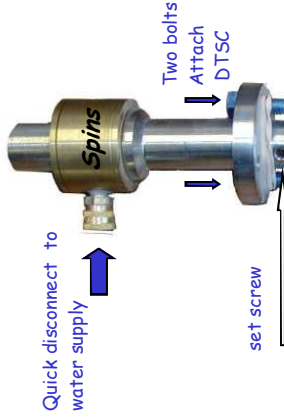


threads together

HOLE CUTTER ADAPTER

Attaches Air or Gas power unit to diamond tipped shell cutters. The Air or Gas power unit shaft coupling threads into any PREDCO Two bolt pattern diamond tip cutter shells. The brass center sleeve spins free allowing the stationary mounted water supplied through quick disconnect water fitting connects to water assembly and supplies necessary cooling water during operation through the water shaft.

PART# A1060



WATER STUB

Water stub delivers water to cutter—can be replaced with a diamond tip pilot guide when drilling horizontally or with out a platform guide. Inserts into HCA with a set screw *

PART# A1163 included with #A1060

Insert into HCA in place of water stub when drilling horizontally or without platform guide



WATER ASSEMBLY

Brass hose fitting, flow control valve, and quick disconnect fittings on 15" 340/ stainless steel braided water hose 3000PSI. Mounts on handle of Air or Gas unit with u-bolt.

Part# A1170

