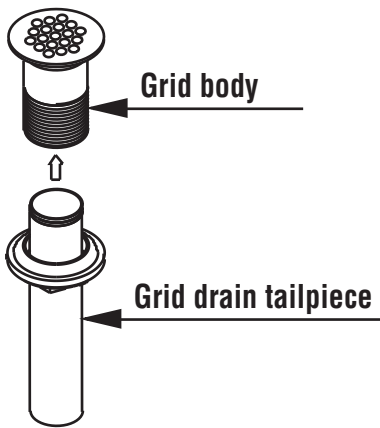
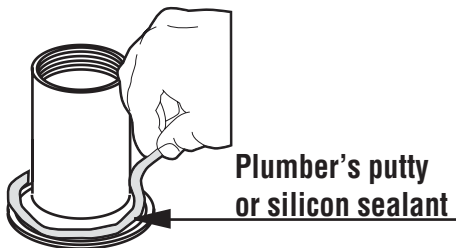


Installation:

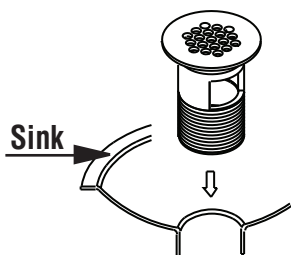
Step 1: Remove the grid body from the grid drain tailpiece.



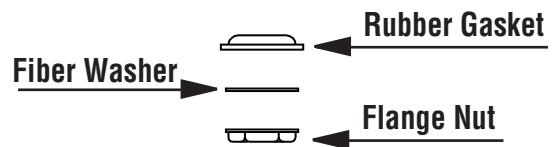
Step 2: Apply plumber's putty or silicone sealant to underside of Grid Strainer flange.



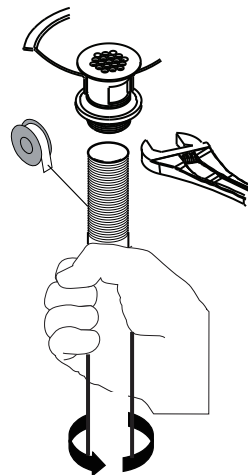
Step 3: From top of sink, insert Grid Strainer through drain hole of sink.



Step 3: From beneath sink, install Rubber Gasket (bevel side up), Fiber Washer and Flange Nut. Tighten Flange Nut securely.



Step 4: Wrap the end threads on the tailpiece with several layers of Teflon tape. Push the tailpiece through the drain opening from below the basin.



Step 5: Remove the excess putty or silicon and connect with the trap.

