

A

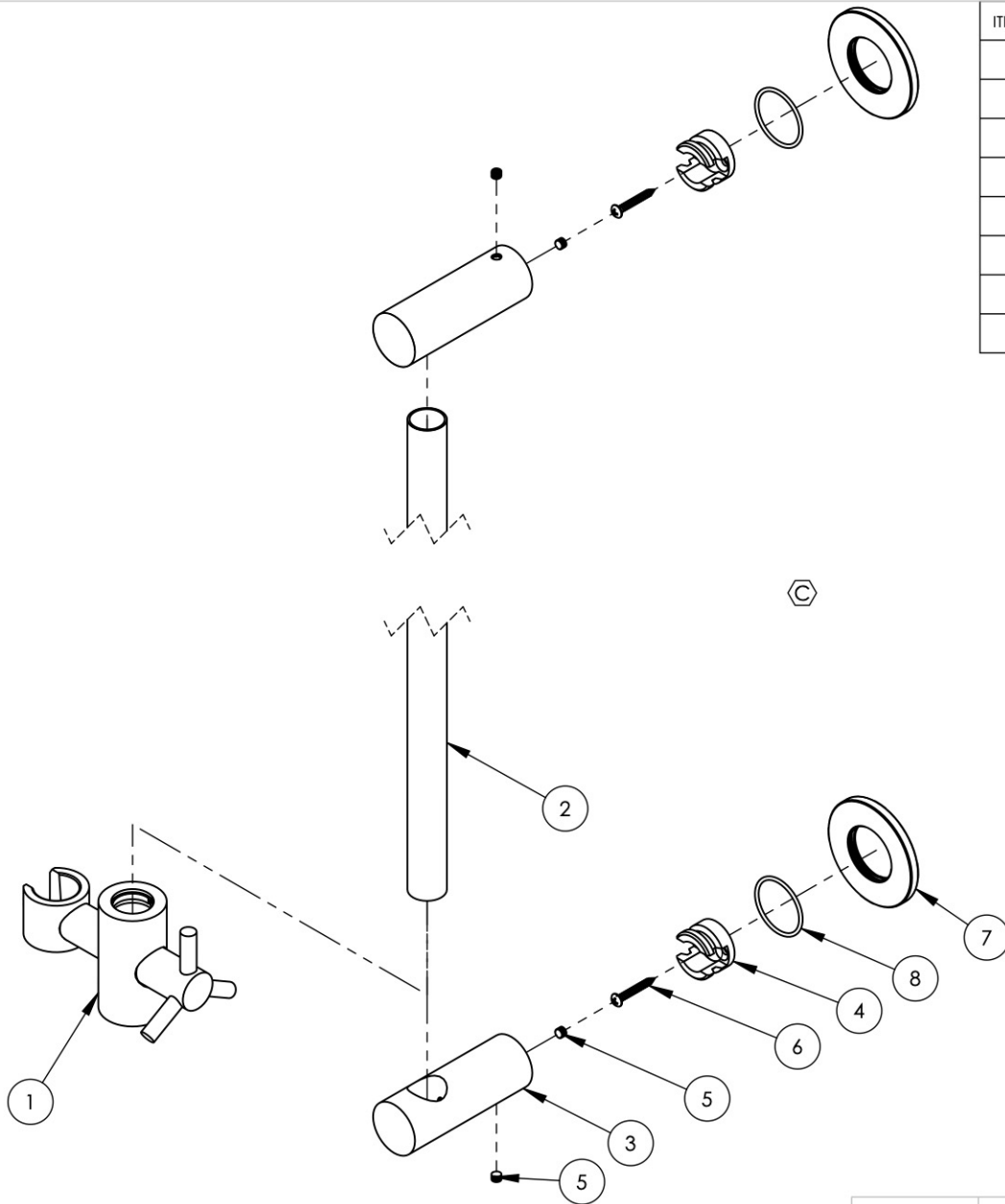
B

C

D

E

ITEM NO.	PART NUMBER	DESCRIPTION	QTY.
1	3-412/00	ASSY. HANDSHOWER HOLDER, CONTEMPORARY	1
2	10917/00	BAR TUBE, SLIDEBAR FOR HANDSHOWER	1
3	10914/00	ARM POST, SLIDEBAR FOR HANDSHOWER	2
4	10916	MOUNT, SLIDEBAR FOR HANDSHOWER	2
5	92166	SET SCREW, CONE PT 10-32 X 3/16"L	4
6	92167	SCREW, PAN HD PHIL NO. 6 X 1" L	2
7	11896/00	ESCUTCHEON, FLANGE, SLIP FIT	2
8	90024	O-RING, 1-1/8"ID X 1-1/4"OD X 1/16"THK, AS-568-024	2



ALL	C	UPDATED COMPONENTS	12/2/2019	RAH
ZONE	REV.	DESCRIPTION	DATE	APPROVED

REVISIONS

1261 LOGAN AVENUE
COSTA MESA, CALIFORNIA 92626
PHONE: 714.361.4800
FAX: 714.617.3120

PROPRIETARY AND CONFIDENTIAL
THE INFORMATION CONTAINED IN THIS DRAWING IS THE SOLE PROPERTY OF RSS MANUFACTURING. ANY REPRODUCTION IN PART OR AS A WHOLE WITHOUT THE WRITTEN PERMISSION OF RSS MANUFACTURING IS PROHIBITED.

-	-	INTERPRET GEOMETRIC DIMENSIONING & TOLERANCING IN ACCORDANCE WITH ASME Y14.5-2009 & ASME Y14.41-2003 STANDARDS, UNLESS OTHERWISE SPECIFIED. DIMENSIONS ARE IN INCHES. TOLERANCES ARE:		
NEXT ASSY	USED ON	FRACTIONS ±1/64"	DECIMALS X.X: ±.1 X.XX: ±.01 X.XXX: ±.005	ANGULAR ±.5°
APPLICATION		MATERIAL	NAME	DATE
FINISH		DRAWN	MAF	3/22/2013
DO NOT SCALE DRAWING		CHECKED	GRE	

ASSY, SLIDEBAR FOR HANDSHOWER CONTEMPORARY

SIZE	ASM/PRT NO.	REV
A	K6025 /00	C
SCALE: 1:3.5	WEIGHT: lbs.	SHEET 1 OF 2

5

4

3

2

1