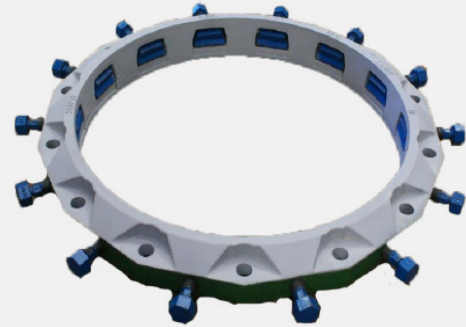
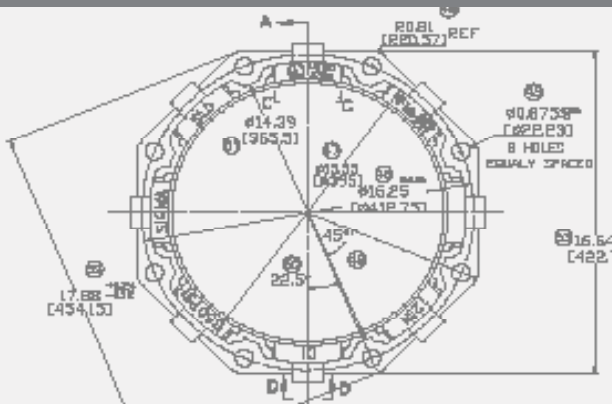


ONE-LOK™ MODEL SLDM WEDGE RESTRAINT FOR OVERSIZED CAST IRON PIPE



PRODUCT SPECIFICATIONS

- MATERIAL:**
- Gland body, wedge inserts and break-off top actuating bolts are manufactured of high strength ductile iron in accordance with ASTM A536, Grade 65-45-12.
 - Wedge inserts are heat-treated to a hardness of 370 BHN minimum.
- SIZE RANGE:**
- 4"-16" and 20"
- DIMENSION:**
- Conform to ANSI/AWWA C111/A21.11, ANSI/AWWA c153/A21.53, ANSI/AWWA C110/A21.11, ANSI/AWWA C150/A21.50 & ANSI/AWWA C151/A21.51 standards.
- PRESSURE RATINGS:**
- 250 psi for 4"-14", 200 psi for 16", and and 150 psi for 20"
- COATING:**
- Grey & Green Alkyd Paint
 - Electro-deposition "CORRSAFE™" available upon request. For further information, please refer to our CORRSAFE Product Information sheet at <http://www.sigmaco.com/pipe-restraint-product-coatings-linings/>
- DEFLECTION:**
- 5° for 4"-12", 2° for 14"-16", and 1-1/2° for 20"
- TRACEABILITY:**
- Gland body, wedge inserts and break-off top actuating bolts are individually cast with exact heat code information.
- INSTALLATION:**
- In accordance with manufacturer's recommendation and applicable AWWA standards.