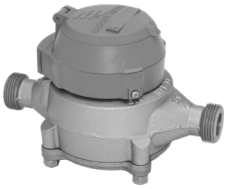




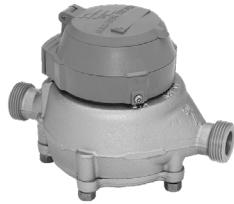
Badger Meter

Recordall® Disc Series Meters

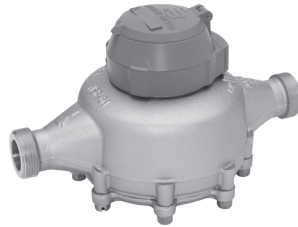
Lead-Free Bronze Alloy, Models 25, 35, 55, 70



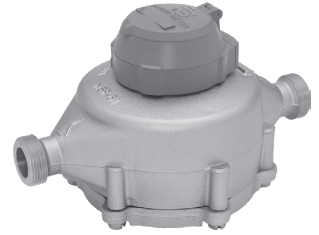
Model 25—5/8 in., 5/8 x 3/4 in.



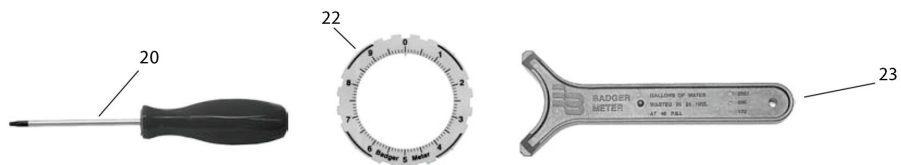
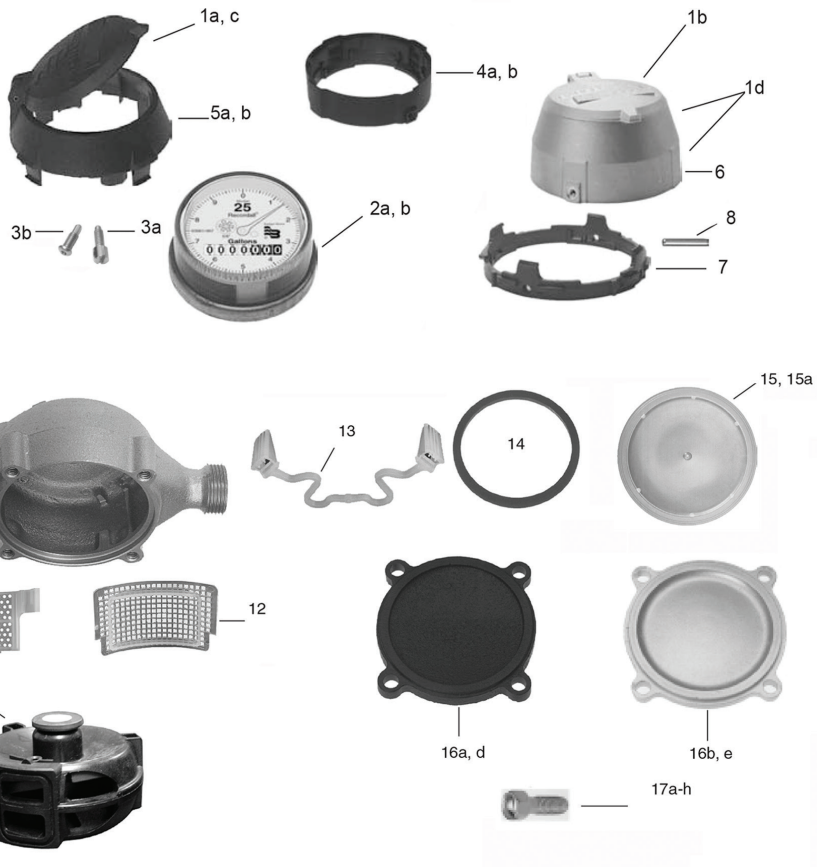
Model 35—3/4 in.



Model 55—1 in



Model 70—1 in



Recordall® Disc Series Meters, Lead-Free Bronze Alloy, Models 25, 35, 55, 70

Item	Registration Parts Description	Part Number					
		Model LP	Model 25	Model 35	Model 55	Model 70	
1a	Register flat lid (plastic) medium gray	62278-003	62278-003	62278-003	62278-003	62278-003	
1b	Register flat lid (bronze)	62353-001	62353-001	62353-001	62353-001	62353-001	
1c	Register flat lid (purple) "RECLAIMED"	62740-001	62740-001	62740-001	62740-001	62740-001	
1d	Register flat lid and shroud (bronze)	62616-001	62616-001	62616-001	62616-001	62616-001	
2a	Register assembly	U.S. gallons	63961-159	63961-002	63961-060	63961-153	63961-068
		Cubic feet	63961-160	63961-003	63961-061	63961-154	63961-069
		Imperial gallons	63961-162	63961-016	63961-074	63961-156	63961-075
		Cubic meters	63961-161	63961-007	63961-062	63961-155	63961-070
2b	Register assembly for "RECLAIMED"	U.S. gallons	63961-163	63961-088	63961-089	63961-157	63961-090
		Cubic feet	63961-164	63961-091	63961-092	63961-158	63961-094
3a	Tamper-resistant screw, standard (for local register, HR-E®)	62335-001	62335-001	62335-001	62335-001	62335-001	
	Tamper-resistant screw, standard (for HR-E LCD encoder, not shown)	62624-001	62624-001	62624-001	62624-001	62624-001	
3b	Tamper-resistant TORX® seal screw (for local register, HR-E)	62516-001	62516-001	62516-001	62516-001	62516-001	
	Tamper-resistant TORX® seal screw (for HR-E LCD encoder, not shown)	62516-002	62516-002	62516-002	62516-002	62516-002	
3c	Tamper-resistant keyed seal screw, standard (for local register, HR-E)	66925-001	66925-001	66925-001	66925-001	66925-001	
	Tamper-resistant keyed seal screw, short (for HR-E LCD encoder, not shown)	66925-003	66925-003	66925-003	66925-003	66925-003	
4a	Plastic shroud (bottom half) medium gray	—	62279-009	62279-009	62279-009	62279-009	
4b	Plastic shroud (bottom half) "RECLAIMED"	—	62279-003	62279-003	62279-003	62279-003	
5a	Plastic shroud (top half) medium gray	—	62280-004	62280-004	62280-004	62280-004	
5b	Plastic shroud (top half) "RECLAIMED"	—	62280-002	62280-002	62280-002	62280-002	
6	Bronze shroud (for flat lid)	62442-001	62442-001	62442-001	62442-001	62442-001	
7	Plastic insert for flat lid bronze shroud	62455-001	62455-001	62455-001	62455-001	62455-001	
8	Flat lid hinge pin	59568-003	59568-003	59568-003	59568-003	59568-003	

Item	Meter Parts Description	Part Numbers			
		Model 25	Model 35	Model 55	Model 70
9a	Housing (BiA), 5/8 in.	62303-021	—	—	—
9b	Housing (BiA), 5/8 x 3/4 in., 5/8 in. bore	62303-019	—	—	—
9c	Housing (BiA), 5/8 x 3/4 in., 3/4 in. bore	62303-020	—	—	—
9d	Housing (BiA), 3/4...7-1/2 in. lay length	—	59807-006	—	—
9e	Housing (BiA), 3/4 x 9 in.	—	59809-009	—	—
9f	Housing (BiA), 3/4 x 1 x 9 in.	—	59809-010	—	—
9g	Housing (BiA), 1 in.	—	—	—	58867-009
9h	Housing (BiA), 1 in.	—	—	65615-003	—
10	Chamber assembly, plastic w/plastic thrust roller	33334-009	33334-029	65553-003	33334-032
	Chamber assembly, plastic w/stainless steel thrust roller	—	—	—	33334-016
	Chamber assembly, plastic, for "RECLAIMED" water (not shown)	33334-038	33334-040	65553-004	33334-042
11	Combined strap and screen	64942-001	—	—	59186-001
12	Screen	—	59805-001	65619-001	—
13	Chamber retainer strap	—	58540-001	58540-001	—
14	Housing gasket O-ring	11071-033	59782-001	65592-001	58769-001
15	Housing bottom liner (for cast iron)	57800-001	59786-001	65618-001	58770-001
15a	Housing bottom liner screen	—	—	—	—
16a	Housing bottom, cast iron	57799-001	59785-001	65654-001	59293-002
16b	Housing bottom (BiA)	—	—	65617-003	—
16b	Housing bottom (BiA)	62635-005	59784-005	—	59703-006
16c	Housing bottom, plastic (not shown)	64428-001	—	—	—
16d	Housing bottom, cast iron, for "RECLAIMED"	57799-003	59785-003	65654-003	59293-003
16e	Housing bottom, bronze, for "RECLAIMED"	62635-002	59784-002	65617-002	59703-002
17a	Housing bolt, plastic closure	58396-001	—	—	—
17b	Housing bolt, seal, plastic closure	58396-002	—	—	—
17c	Housing bolt, seal, bronze/iron closure	59058-001	59058-001	59058-001	59733-001
17d	Housing bolt, bronze/iron closure	62777-001	62777-001	62777-001	—
17e	Housing bolt, bronze bolt	62260-001	62260-001	62260-001	55029-060
17f	Housing bolt, seal, bronze bolt	—	—	—	25421-041
17g	Housing bolt, all bottoms	—	—	—	—
17h	Housing bolt, seal, all bottoms	—	—	—	—
19	Washer (M70) bronze bottom. 1989-1997 only, stainless steel washer (not shown)	—	—	—	24991-044
	Washer (M70) bronze bottom. 1989-1997 only, bronze washer (not shown)	—	—	—	55260-016
20	TORX® seal screw driver & bit (stubby)	62658-001	62658-001	62658-001	62658-001
	TORX® seal screw driver & bit (long)	62658-003	62658-003	62658-003	62658-003
	TORX® seal screw driver bit (not shown)	62657-001	62657-001	62657-001	62657-001
21	Driver bit, keyed seal screw (not shown)	66925-002	66925-002	66925-002	66925-002
	Bit driver, stubby, without bit (not shown)	62658-005	62658-005	62658-005	62658-005
	Bit driver, standard, without bit (not shown)	62658-006	62658-006	62658-006	62658-006
22	Register test ring	62446-001	62446-001	62446-001	62446-001
23	Plastic shroud disassembly tool	62346-001	62346-001	62346-001	62346-001
Chamber assembly service parts:					
	O-Ring for chamber	22650-045	22650-056	22650-060	22650-057
	O-Ring for all plastic chamber	64083-006	—	—	—
	Thrust roller, plastic	58965-001	58965-001	65558-001	59652-001
	Thrust roller, stainless steel	—	—	—	59746-001
	Dovetail thrust roller insert	33342-000	59743-001	—	11074-003

SMART WATER IS BADGER METER

Trademarks appearing in this document are the property of their respective entities. Due to continuous research, product improvements and enhancements, Badger Meter reserves the right to change product or system specifications without notice, except to the extent an outstanding contractual obligation exists. © 2020 Badger Meter, Inc. All rights reserved.