

PRODUCT DATA SHEET

Metacaulk® 950 Firestopping Sealant

Classified Through-Penetration Firestop System Numbers CAJ-1035, CAJ-1036, CAJ-1038, CAJ-1039, CAJ-1051, CAJ-1076, CAJ-1114, CAJ-2015, CAJ-3026, CAJ-3027, CAJ-5011 CAJ 5084 and CAJ-8010, CAJ-1186; WJ-1007, WJ-1008, WJ-1013, WJ-1019, WJ-2005 and WJ-8001; WL-1013, WL-1014, WL-1024, WL-1025, WL-1026, WL-1035, WL-1040, WL-2014. WL-3013, WL-1075, WL-3014, WL-5056, WL-1074 and WL-8001

November 2009



4 Years Member
International Firestop Council

1. Product Description

Metacaulk® 950 is a one component fire-rated sealant for through-penetration fire stop systems. In the event of a fire, Metacaulk® 950 will prevent the spread of flames, smoke, gas and water through penetration openings. It is formulated with incombustible inorganic materials, therefore Metacaulk® 950 will not create smoke or toxic gases when exposed to fire. Metacaulk® 950 is to be used for interior applications only. It cannot be used in areas where there is continuous vibration on the through-penetration opening where wet conditions exist or may occur, or where there are continuous temperatures above 120° F(49° C). Metacaulk® 950 is applied with a conventional caulking gun or troweled from pails. For large applications, it can be pumped from special straight sided pails. Metacaulk® 950 is a non-slumping sealant that sets to form a hard, yet retrofitable surface and can be used to seal static construction joints. Mixing is never required and no special skills are necessary for installation. Metacaulk® 950 systems are rated for 1, 2 and 3 hours in accordance with the ASTM E 814 (UL 1479) and ULC CAN 4-S1 15M test standards. **Metacaulk® 950 is protected in a wet stage as well as in a dry stage against mold growth with a combination of biocides.**

Use Metacaulk® 950 for various penetrations:

Large Openings
PVC/CPVC Pipe (Closed Only)
Other Types of Plastic Pipe
EMT, Semi-Rigid, and Rigid Conduit
Steel, Copper, and Aluminum Pipe
Multiple Pipes, Conduit, and Cable
Steel and Copper Pipes with Insulation
Telephone, Power, Romex Cable
Static Construction Joints

This list of penetration material diameters vary from 1/4" (6 mm) to 21"(533 mm). Call RECTORSEAL for the latest updated information.

Metacaulk® 950 Features

- * Inorganic and has No Volatile Solvents which makes it particularly useful when installing in confined spaces or occupied areas.
- * Does not have Asbestos Fillers.
- * A single component penetration sealant system, no mixing necessary and no required additives.
- * D O T Classification is Not Regulated.
- * Applied with a conventional caulking gun, trowel or with pumping equipment.
- * An easy installation sealant with water clean up capabilities.
- * A general purpose and accoustical fire stop sealant.

2. Material Properties

| | |
|------------------|------------------|
| Asbestos Fillers | None |
| Application | Standard |
| | 10.3 oz (304 ml) |
| Color | Cream |
| Cure Time | 21 days |
| Density | 15.3 lbs/gal |
| | 1.83 kg/L |
| Elastomeric | No |

ASTM E 84, UL 723 Tunnel Test

| | |
|------------------------------|--------------------|
| Flame Spread Index | 0 |
| Smoke Index | 10 |
| Freezing Temperature | 30° F (-1° C) |
| Glass Transition Temperature | ±2000° F (1093° C) |
| Corrosion Cracking | |
| NRC 1.36 | Pass |
| Skin Over Time | 2 min. |
| Tack Free Time | |
| TTS-230-C | Pass |
| pH Value | 13.5 |

| | |
|---------------------|--------------|
| Volatile Solvents | None |
| Volume Coverage | |
| cu in/10.3 oz. tube | 18, (295 cc) |
| cu in/lb (cu cm/kg) | 15.1, (545) |
| cu in/gal (cu cm/L) | 231, (1000) |
| Working Time | 30 min. |
| STC | 52* |

*Tested in a UL 411 wall assembly/section to ASTM E90.

3. Applications

Use Metacaulk® 950 exclusively for interior conditions. Because Metacaulk® 950 is water soluble it is not suitable for exterior or wet area use. See applications for Metacaulk® 835+ for exterior or wet conditions. Metacaulk® 950 is a general purpose fire stop sealant for electrical, plumbing, plastic pipe and telephone communication systems penetrations. Use in vertical and horizontal applications, and for bedding and sealing small voids, splices and gaps. Metacaulk® 950 is also an excellent fire rated acoustical sealant, and can be used around electrical outlets and non-vibrating construction joints. Use Metacaulk® 950 to prevent the spread of fire through fire rated gypsum wallboard partitions, concrete block or concrete walls and/or concrete or wood floors. Consult application data for specific aluminum alloys before using Metacaulk® 950 with aluminum pipe.

4. Installation Data

Install Metacaulk® 950 using standard caulking techniques or trowel from pails. For large applications, pump it from special straight sided pails. When damming material is needed, inexpensive cardboard or backer rod can be used. Prior to use, products should be brought to room temperature or 70° F (21° C) whichever is greater.

TYPICAL GYPSUM WALLBOARD INSTALLATION

- Step 1)** Cut opening in floor or wall.
Step 2) Clean penetration opening and surfaces of loose debris, dirt, oil and wax.
Step 3) Install wire mesh if required. Form wire mesh into cylinder to match hole diameter. Slip wire mesh inside wall along penetrating item and allow mesh to spring back against hole.

Step 4) Install backing material if required.

Step 5) Gun, trowel or pump the sealant as required to the specified depth. Trowel surface flush with wall. Consult UL Directory for complete instructions and system listings.

5. Testing Data

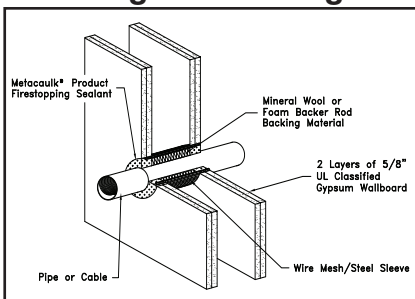
Metacaulk® 950 is Classified by Underwriters Laboratories Inc. as a Fill, Void, or Cavity Material and is Listed by Warnock Hersey International, Inc. For specific test criteria, see UL Fire Resistance Directory and Warnock Hersey International Listings Directory or call RECTORSEAL.

Metacaulk® 950 was tested at a minimum 0.01 inches (2.5 Pa) water, positive pressure, in accordance with ASTM E 814 and UL 1479 test standards.

Through-Penetration Fire Stop, UL System Numbers WJ-1007, WJ-1008, WJ-1013, WJ-1019, WJ-2005, WJ-8001, WL-1013, WL-1014, WL-1024, WL-1025, WL-1026, WL-1035, WL-1040, WL-1074, WL-1075, WL-2014, WL-3013, WL-3014, WL-5056 and WL-8001 are for use in gypsum wallboard with steel or wood studs or for use in concrete block or concrete slab wall construction. UL System Numbers CAJ-1035, CAJ-1036, CAJ-1038, CAJ-1186, CAJ-1039, CAJ-1051, CAJ-1076, CAJ-1114, CAJ-2015, CAJ-3026, CAJ-3027, CAJ-5011, CAJ5084 and CAJ-8010 are for solid concrete or concrete block walls and concrete floor construction. WHI System Numbers TRC/PH 60-01 and TRC/PH 60-02 are for wood floor construction.

Sound Transmission Class (STC) calculated in accordance with ASTM 413-73.

6. Storage & Handling



10. LIMITED WARRANTY

RectorSeal makes the Limited Express Warranty that when the instructions for storage and handling of our products are followed we warrant our products to be free from defects. THIS LIMITED EXPRESS WARRANTY IS EXPRESSLY IN LIEU OF ANY OTHER EXPRESS OR IMPLIED WARRANTIES, INCLUDING ANY IMPLIED WARRANTY OF MERCHANTABILITY OR FITNESS FOR A PARTICULAR PURPOSE, AND OF ANY OTHER OBLIGATION ON THE PART OF RECTORSEAL. The sole remedy for breach of the Limited Express Warranty shall be the refund of the purchase price. All other liability is negated and disclaimed, and RectorSeal shall not be liable for incidental or consequential damages.

Suggestions and recommendations covering the use of our products are based on our past experience and laboratory findings. However, as we have no control as to the methods and conditions of application, we only assume responsibility for the uniformity of our products within manufacturing tolerances.

Metacaulk® 950 is not to be stored in areas where temperatures exceed 100° F(38° C) or drop below 35°F (2° C). If freezing occurs, thaw completely before use. Keep products stored under protective cover, in its original containers. Product has a minimum shelf life of 2 years, subject to re-inspection thereafter. A stock rotation program is recommended.

RECTORSEAL
2601 Spenwick Drive, Houston, Texas 77055
WWW.RECTORSEAL.COM
WWW.METACAULK.COM

7. Availability

Metacaulk® 950 is available in:
10.3 oz. (304 ml).

8. Limitations

Metacaulk® 950 cannot be used in areas where there is continuous vibration on the through-penetration opening, where wet conditions exist or may occur or where there are continuous temperatures above 120°F (49° C). Metacaulk® 950 is not suitable for exterior or wet area use. Consult application data for specific aluminum alloys before using Metacaulk® 950 with aluminum pipe.

9. CAUTIONS

FOR CHEMICAL EMERGENCY, SPILL, LEAK, FIRE, EXPOSURE OR ACCIDENT, CALL CHEMTREC-DAY OR NIGHT 1-800-424-9300.

CONTAINS: Alkaline silicate and ceramic fibers. **PRECAUTIONS:** Do not take internally. May cause eye, skin, and respiratory tract irritation. Wear gloves and safety glasses. Wash after handling. **FIRST AID:** For any overexposure or if skin irritation develops, get immediate medical attention after first aid is given. **EYES** - Flush for 15 minutes with clean water. **SKIN** - Wash with soap and water. Do not use solvents to remove from skin. **INHALATION** - Remove to fresh air. **INGESTION - DO NOT INDUCE VOMITING. SPILLS** - Clean up immediately with scrapers and water. **STORAGE AND HANDLING** - Keep container upright and tightly closed. Do not reuse container. **KEEP OUT OF REACH OF CHILDREN.**

For additional information, refer to Material Safety Data Sheet

**For additional technical service,
call: 1-800-231-3345
Fax: 1-800-452-2824**