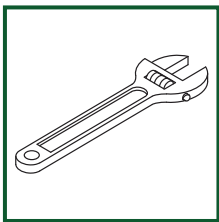


**Toilet Tank To Bowl Bolt
Model PF025 , PF035**

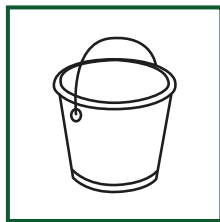
**Toilet Tank To Bowl Bolt
Modelos PF025 , PF035**

**Toilet Tank To Bowl Bolt
Modèles PF025 , PF035**

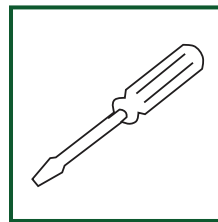
You may need/Puede necesitar/Vous pourriez avoir besoin



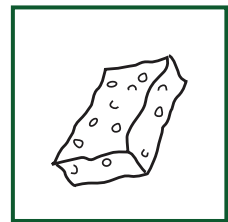
Adjustable Wrench



bucket

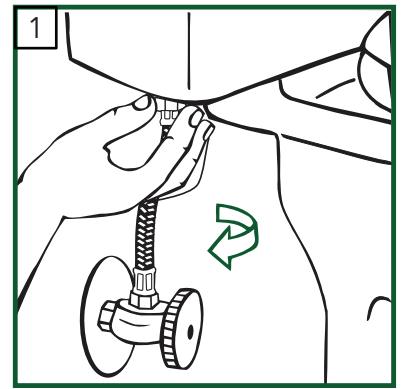


Head screwdriver

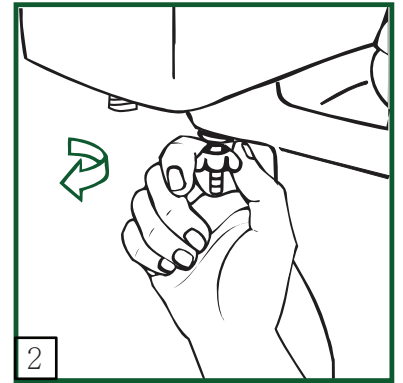


Sponge

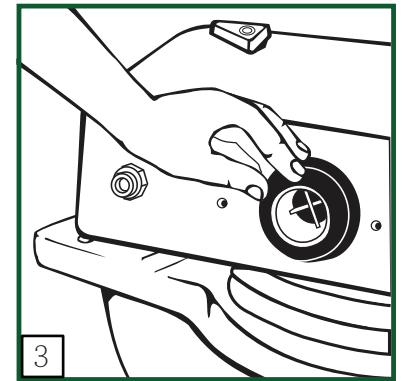
1. Turn off water supply. Flush toilet and remove excess water from tank with sponge. Remove water supply line from bottom of toilet fill valve.



2. Unbolt tank from bowl, then lift off tank. Remove washers and nuts from bottom of tank, then remove old bolts. Remove old gasket.



3. Slide new sponge rubber gasket (small side down) over nut on threaded end of flush valve. Using diagram at right for reference, install bolts as follows: Slide rubber washer under bolt head and insert bolt through tank. Install brass washer, then thread hex nut onto bolt. Carefully tighten bolt until snug.



4. Place tank back on bowl so that sponge gasket fits evenly. Using diagram, install rubber washer, brass washer, then wing nut onto bolt. Repeat for other side. Tighten nuts evenly. **DO NOT OVERTIGHTEN** or bowl may crack. Reconnect water supply line to toilet tank fill valve. Turn on water supply.

