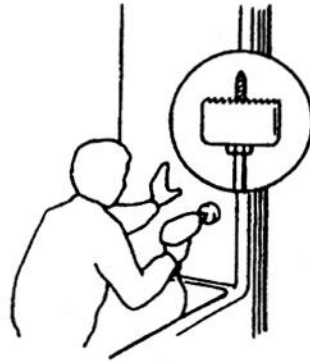


3. From the finished side of the unit you can use the proper hole saw to cut the openings indicated by the pilot holes. Make sure your hole saw is of the proper size, and that location of each cut is proper. (Fig )

Fig. 6



#### E. Finish wall

1. If desired apply a 1/8" furring strip to the exposed studs to provide a flush surface for the mounting of a wallboard above and around the bath unit.
2. Apply silicone or butyl sealer to the furring strips before installing wallboard. Allow for 1/4" space between the bottom edge of the wallboard and the offset face of the bath unit. Fill this area with butyl sealer, and seal the front mounting flanges where the unit has been attached.
3. On installations where furring strips are not used, the wall board should be brought down to the top of the nailing flange. This will leave a gap c<sup>4</sup> 1" to 1 1/4". Fill in the area between the bottom edge of the wallboard and the offset face of the bath unit with butyl sealer.

#### F. Drain connections

Install the overflow fittings in the drain line and the bath unit in compliance with local code requirements and good plumbing practice.

#### G. Finish plumbing

Secure all supply lines and check all finish fittings for installation. Caulk all openings around valves and outlets with butyl sealant. Install your finish fittings and secure your access panel.

### Instructions for Cleaning

#### Day-To-Day Cleaning

Use warm water and an undiluted liquid detergent, such as Handy Andy, Lestoil, or Mr. Clean.

#### For Stubborn Stains

Use one of the powdered detergents, such as Spic & Span dry on a damp sponge. Solvents\* such as turpentine or paint thinner may be used sparingly. Scouring pads made of nylon, saran, or polyethylene and containing no abrasive may be used.

#### To Maintain Luster

Apply an automotive type polishing compound such as DuPont No. 7 and a clean liquid wax, such as Johnson's J-Wax.

#### Caution

Do not use abrasive scouring powders or metal scouring pads. The use of rubber or plastic mats is not recommended. If used, do not leave mat on tub bottom after use because of possible surface degradation.

\*Follow safety precautions as shown on container of such materials and use only when area is well ventilated and away from open flame.



#### Carolina Classic Manufacturing, Inc.

510 East Jones Street  
Wilson, NC 27893  
1-800-775-8827



The manufacturer is not responsible for costs incurred from units purchased that will not fit through openings, No returns, no allowances.



FIBERGLASS



TUBS • SHOWERS • WHIRLPOOLS

## Installation & Cleaning

### Instructions

- One Piece Tub/Shower Modules
- One Piece Shower Modules
- Tub/Shower Remodeling Units
- Shower Remodeling Units
- Knockdown Bath Modules
- Knockdown Shower Modules
- Garden Tubs



#### Codes

Installation on these bath units must conform to state and local codes.

## Preinstallation Instructions - All Multi-Piece Modules General Information

1. The side walls of your multi-piece units have been secured for shipping with wood supports. These wood supports and screws are not needed to assemble the unit and may be discarded.
2. All multi-piece units have been prefitted and predrilled for your convenience in assembly.
3. All flanges have been factory trimmed to the proper width. However, if you need to reduce the flange width for some reason, this can be done by sanding the edge of the flange with a coarse sandpaper and sanding block.
4. After the wood shipping supports have been removed, disassemble the unit and set the side sections upright.
5. Apply a 1/8" to 3/16" bead of seal adhesive to all the side sections mating surfaces just forward of the predrilled holes. This bead should run the full length of the flanges. Assemble the wall panels using the bolts and nuts provided.
6. Apply a 1/8" to 3/16" bead of seal adhesive to the base flange, locating the adhesive just forward of the predrilled holes. Place the wall assembly on the base and secure with the bolts and nuts provided.
7. Any excess sealant should be immediately removed with a cloth and warm soapy water.
8. Check fit-up of mating flanges and make any adjustments you deem necessary before the sealant cures.

**NOTE:** Screws & sealant are supplied by Carolina Classic for the assembly of multi-piece units.

## Installation procedure - all modules

### A. Framing

1. Construct a framing pocket which allows for the insertion of your particular unit model. (Fig. 1) Check all dimensions against the bath unit to ensure a proper fit. Our drain and overflow openings are cut for standard fittings.

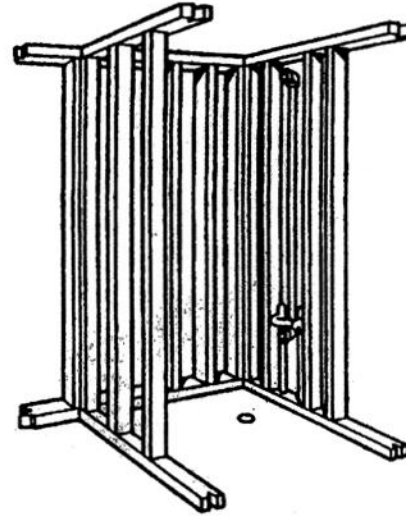


Fig. 1

2. The framing pocket must include an "access panel" to the drain and water supply connections through the floor. (Fig. 2 - dotted lines indicate section of the floor plate to be removed.) Some plumbing codes require an access panel to the supply side of the unit.

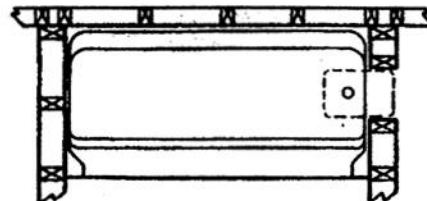
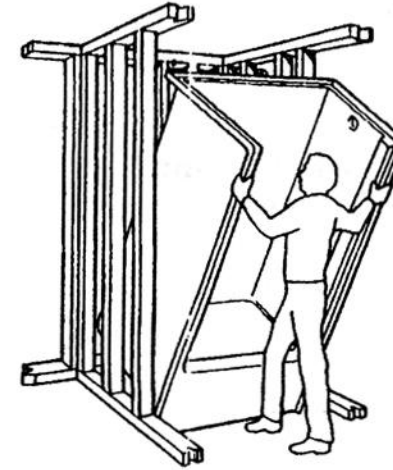


Fig. 2

### B. Positioning the unit

Tilt the unit forward. (Fig. 3) Align the apron front to the framing pocket front, and gently lower the unit into the frame.

Fig. 3



### C. Fastening the unit

1. Plumb and level the bathing unit front to back using the front post as your reference as well as side to side using the dam as your reference. Drill at approximately eight inch intervals along the entire length of the vertical mounting flanges. Drill the horizontal mounting flanges at each stud. Attach the drilled flanges to the framing pocket with 1 1/2" to 1 3/4" long roofing nails or equivalent nails or screws. (Fig. 4)

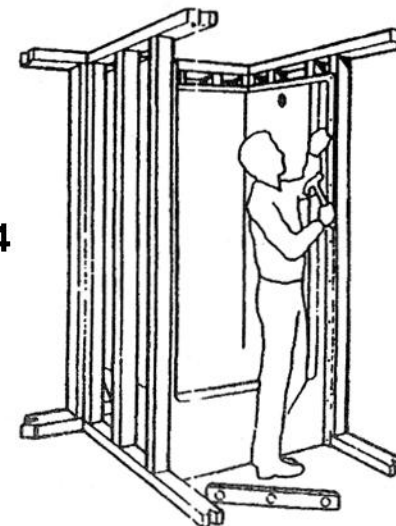


Fig. 4

2. Next, using excess framing material, cut and fit cured/dried shims under the floor. This will ensure a secure installation. (This is only necessary on 3 and 4 piece units and 2 piece whirlpool units.)

★ The bottom of the FRP unit should be continuously supported if the unit is to be used by individuals weighing in excess of 250 lbs.

### D. Rough plumbing

1. Install the drain line and trap as shown by your construction plans. Do not allow drain line to contact edges of drain line hole cut in sub-flooring. Install the water supply line for attachment to fittings that are to be positioned later during the installation. (Fig. 5)



Fig. 5

2. Lay out the position of the mixing valves on the back of the end wall of the bathing unit. Check your layout carefully and drill pilot holes of 1/4" or less. Inspect requirements for a shower head location and drill the 1/4" pilot hole.