

JJM Boiler Works, Inc.

Safe, simple, 100% recyclable and affordable.



JM-2C



JM-3C



JM-6C



NB-6



NB-6-P
Pump



NB-300

Your **GREEN**
SOLUTION

*Products for the control of
Acidic Condensate from Boilers*

Furnaces

Stack Drains

Flue Drains

Hot Water Heaters

Air Compressor Blow Downs



NB-5LP

Acidic Condensate Neutralizing Products

Our pH treatment inline tubes and tanks offer a level of protection from damage caused by the low PH condensate levels

JM SERIES - INLINE TUBES

The JM INLINE SERIES of neutralizers are designed to raise the PH of acidic liquid produced by condensing furnaces, hot water heaters, direct fired unit heaters, infrared unit heaters, and boilers to a safe level as recognized by the national plumbing code of 5.5-8.5 PH.



MODEL #	JM-2
BTU/MBH	50-150
FLOW RATE/GPH	1.30
INLET PORT	1 - .5" NPT
OUTLET PORT	1 - .5" NPT
MOUNTING	HORIZONTAL
CLEAR PVC	X
SOLID PVC	X



MODEL #	JM-3
BTU/MBH	50-300
FLOW RATE/GPH	1.30 - 3.45
INLET PORT	1 - .5" NPT
OUTLET PORT	1 - .5" NPT
MOUNTING	HORIZONTAL
CLEAR PVC	X
SOLID PVC	X



MODEL #	JM-6
BTU/MBH	125-600
FLOW RATE/GPH	1.20 - 6.90
INLET PORT	2 - .5" NPT
OUTLET PORT	1 - .5" NPT
MOUNTING	HORIZONTAL
CLEAR PVC	X
SOLID PVC	X



MODEL #	JM-10
BTU/MBH	600-1,000
FLOW RATE/GPH	6.9 - 11.5
INLET PORT	2 - .5" NPT
OUTLET PORT	1 - .5" NPT
MOUNTING	HORIZONTAL
CLEAR PVC	X
SOLID PVC	X



MODEL #	JM-20
BTU/MBH	1,000-2,000
FLOW RATE/GPH	11.5 - 23.0
INLET PORT	2 - .75" NPT
OUTLET PORT	1 - .75" NPT
MOUNTING	HORIZONTAL
CLEAR PVC	X
SOLID PVC	X



MODEL #	JM-30
BTU/MBH	2,000-3,000
FLOW RATE/GPH	23.0 - 34.5
INLET PORT	2 - .75" NPT
OUTLET PORT	1 - .75" NPT
MOUNTING	HORIZONTAL
CLEAR PVC	X
SOLID PVC	X



MODEL #	JM-40
BTU/MBH	3,000-4,000
FLOW RATE/GPH	34.5 - 46.0
INLET PORT	2 - 1.0" NPT
OUTLET PORT	1 - 1.0" NPT
MOUNTING	HORIZONTAL
CLEAR PVC	N/A
SOLID PVC	X



MODEL #	JM-50
BTU/MBH	4,000-5,000
FLOW RATE/GPH	46.0 - 57.5
INLET PORT	2 - 1.0" NPT
OUTLET PORT	1 - 1.0" NPT
MOUNTING	HORIZONTAL
CLEAR PVC	N/A
SOLID PVC	X

Acidity of fireside boiler condensate drained to many of the following areas: Cast iron pipe, sump pump seals, pump levers, septic tank, shrubs, ABS pipe, city sewer systems, and outdoor vegetation.



NBSERIES - TANKS

The NB Series of pH treatment kits come in eight different tank sizes, with an input range of 4,000MBH to 32,000 MBH. Most commonly applied to larger boilers rooms and multiple connections to the same neutralizer. All are gravity fed and some models employ pumps and pH monitoring panels with alarms.



MODEL #	NB-4
BTU/MBH	500 - 4,000
FLOW RATE	5.75 - 40.0 GPH
INLET PORT	1 - 1" NPT
OUTLET PORT	1 - 1" NPT
VENT PORT	.75" NPT
MOUNTING	FLOOR

The NB-5LP (low profile) is a box type product design to allow for installation with low condensate outlet drains on heating or hot water units. It is designed for units with BTU inputs of 500-5,000 MBH and a flow rate of 5.75-57.5 GPH when fired with either natural gas or propane gas. The NB-5LP is field rechargeable by removing the top clean out cover. The units are supplied with eight plastic bags of charging agent and must be installed by the contractor. Each unit is supplied with two 1"NPT inlet ports, two 1"NPT outlet ports, one .75"NPT vent ports. Recharge kits are available.



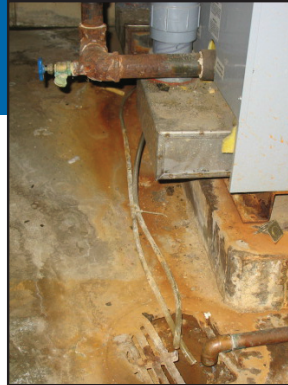
MODEL #	NB-5LP
BTU/MBH	500 - 5,000
FLOW RATE	5.75 - 57.5 GPH
INLET PORT	2 - 1.0" NPT
OUTLET PORT	2 - 1.0" NPT
VENT PORT	.75" NPT
MOUNTING	FLOOR



MODEL #	NB-6
BTU/MBH	500 - 6,000
FLOW RATE	5.75 - 69.0 GPH
INLET PORT	1 - 1.0" NPT
OUTLET PORT	1 - 1.0" NPT
VENT PORT	.75" NPT
MOUNTING	FLOOR



MODEL #	NB-7
BTU/MBH	500 - 7,000
FLOW RATE	5 - 70.0 GPH
INLET PORT	1 - 1.25" NPT
OUTLET PORT	1 - 1.25" NPT
VENT PORT	.75" NPT
MOUNTING	FLOOR



Self priming, Viton Valves, Santoprene diaphragm, 60 PSI cut out switch, 3/8" Ports. 6 gallon Poly Tank.



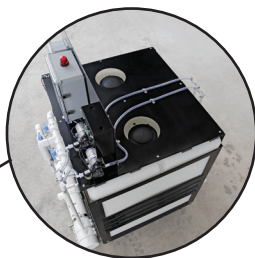
MODEL #	NB-9
BTU/MBH	500 - 9,000
FLOW RATE	5 - 90.0 GPH
INLET PORT	1 - 1.25" NPT
OUTLET PORT	1 - 1.25" NPT
VENT PORT	.75" NPT
MOUNTING	FLOOR



MODEL #	NB-6-P
BTU/MBH	500 - 6,000
FLOW RATE	5.75 - 69.0 GPH
INLET PORT	1 - 1" NPT
OUTLET PORT	.375" NPT
MOUNTING	FLOOR

NB150 & 300 NEUTRALIZER

JJM Boiler Works, Inc. is pleased to offer a new addition to our line of acidic condensate treatment products.



Factory piping not shown in picture.

MODEL #	NB-300
BTU/MBH	32,000
FLOW RATE	320 GPH
INLET PORT	1.5" NPT
DRAIN PORT	1.5" NPT
FLUSH DRAIN	1.5" NPT

- Entire Boiler Room Neutralizer / Boiler Condensate Drains / Flue Gas Stack Drains / Economizer Stack Drains / Hot Water Condensate Drains
- 6" Receiver Manifold Reservoir
- Dual Vertical Receiver Float Switches
- Dual Self Priming Condensate Pumps with Filters
- Dual Pump Control Panel / 120/1/60
- PH Monitoring Probe and Control Panel 120/1/60
- PH Alarm Buzzer & Light / Remote Alarm Contacts
- Dual 150 Gallon Receiving Tanks Skid Mounted
- Polyethylene Tanks with U.V. Inhibitors
- Steel Frame with Forklift Base
- Indoor and Outdoor Applications
- Translucent Walls with 7" Fill Ports
- Power On Light / On-Off Service Switch / 120/1/60

MODEL #	NB-150
BTU/MBH	16,000
FLOW RATE	160 GPH
INLET PORT	1 - 1.25" NPT
OUTLET PORT	1 - 1.25" NPT
MOUNTING	FLOOR

PELLET REFILL TUBES CLEAR AND SOLID

Model	Part No.	Weight	Ship Weight
JM-2R	1101	2.5#	3.0#
JM-2R CLEAR	1102	2.5#	3.0#
JM-3R	1103	3.0#	3.5#
JM-3R CLEAR	1104	3.0#	3.5#

Models JM-2 and JM-3 refill kits are sealed fully charged tubes. The contractor must use the existing mounting brackets and fittings.

COMMERCIAL PELLET REFILL PAIS / FIELD SERVICEABLE UNITS

Model	Part No.	Pellet Weight	Ship Weight
2 GALLON	3001	12.5#	16#
4 GALLON	3002	25.0#	28#
5 GALLON	3003	31.50#	37#
8 GALLON	3004	50#	56#

Refer to the pellet pail cross reference chart which most closely matches your pellet weight needs. Pellet pails can also be shipped via pallets for bulk orders. Any leftover pellets can be stored in the sealed pail and in a dry location for future use.

ADVANCE PELLET TECHNOLOGY WEIGHT CHART

Model	Refill Pellet Weight	Field Cleanable	Not Cleanable	Part Number
JM-2	SEALED TUBE		X	1101
JM-2 CLEAR	SEALED TUBE		X	1102
JM-3	SEALED TUBE		X	1103
JM-3 CLEAR	SEALED TUBE		X	1104
JM-6	1.5#	X		3001
JM-6 CLEAR	1.5#	X		3001
JM-10	2.5#	X		3001
JM-10 CLEAR	2.5#	X		3001
JM-20	4.5#	X		3001
JM-20 CLEAR	4.5#	X		3001
JM-30	7.0#	X		3001
JM-30 CLEAR	7.0#	X		3001
JM-40	14.0#	X		3002
JM-50	19.5#	X		3002
NB-4 TANK	14.0#	X		3002
NB-5LP TANK	32.0#	X		3004
NB-6 TANK	27.0#	X		3003
NB-7 TANK	32.0#	X		3004
NB-9 TANK	54.0#	X		(2) 3003
NB-150 TANK	185#	X		(4) 3004
NB-300 TANK	370#	X		(8) 3004
NB-6-P TANK	19.0#	X		3002

About Us



JJM Boiler Works is a design and manufacturing business located in Easthampton, Massachusetts with over thirty-two years of experience in the boiler trade. Owned and operated by Denise and George Carney we offer the industry a solution for handling low PH levels of condensate produced by today's high efficient gas boilers, hot water heaters and furnaces. Through our many engineering, contractor, wholesaler, representative and OEM contacts across North America we found an industry need for pH treatment of acidic condensate, a fireside condensate acid neutralizer. JJM Boiler Work's tubes and tanks are offered for sale at the wholesale level, or through representatives throughout the U.S. and Canada.

Distributed by



WARRANTY:

JJM BOILERWORKS, INC. provides a 1-year warranty from installation date for manufacturer's defects.

JJM Boiler Works, Inc.

69 Ferry Street, Units 17-20, Easthampton, MA 01027

office: 413-527-1893 | fax: 413-527-2122

email: jjmtubes@charter.net

www.jjmboilerworks.com

© 2010 JJM Boiler Works, Inc.

