

Model
SS-3802
Oval Drop-in Lavatory

DESCRIPTION

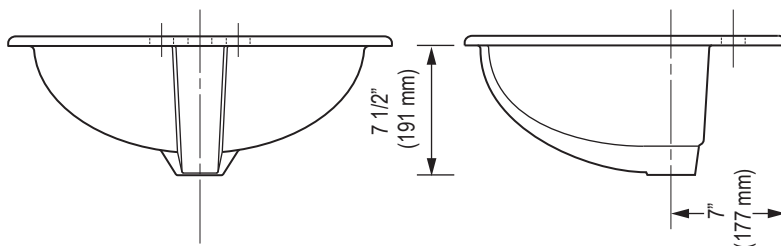
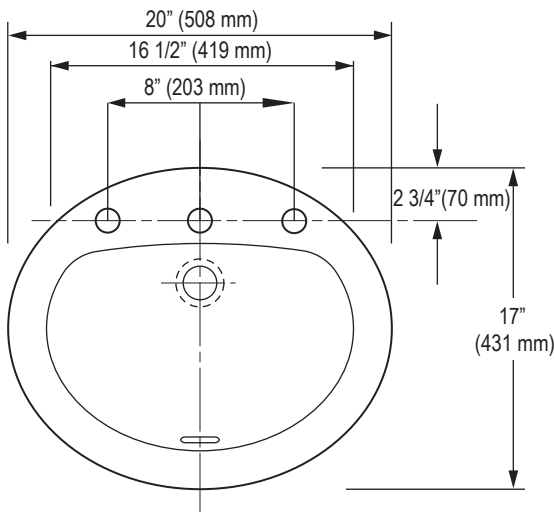
Complete vitreous china lavatory
Model SS-3802



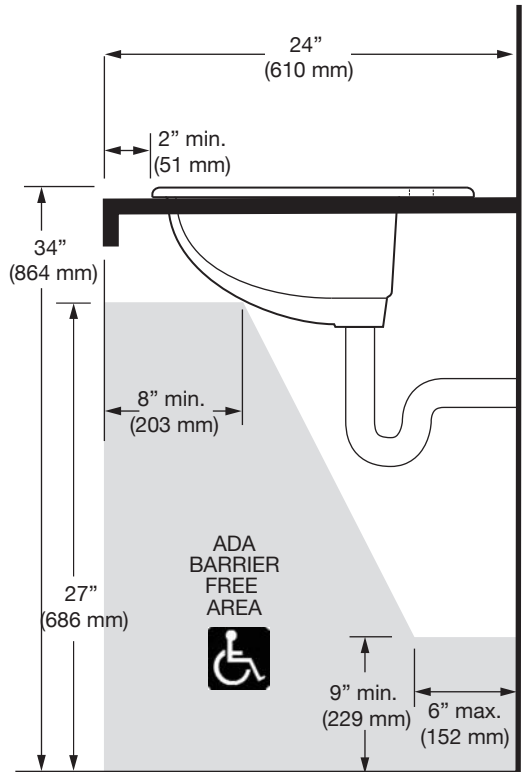
SPECIFICATIONS

Lavatory

- White vitreous china
- Self-rimming
- 8" (203 mm) centerset
- Overflow
- ADA compliant when mounted with lavatory mounted at 34" from finished floor. See illustration for recommended ADA installation
- 20" (508 mm) x 17" (431 mm)



Important: Fixture dimensions are nominal and may vary slightly from drawings.



Product Specification

Sink shall be made of vitreous china with an overflow. Sink shall be drop-in mounted. Sink shall have an 8" centerset. Sink shall be Sloan Model SS-3802.



Sloan Valve Company is buying renewable energy certificates to meet 100% of the company's purchased electricity use at its Franklin Park, Illinois facility.

SLOAN®

Sloan Valve Company
10500 Seymour Avenue
Franklin Park, IL 60131
Phone: 1-800-9-VALVE-9 (982-5839)
or 1-847-671-4300
Fax: 1-800-447-8329 or 1-847-671-4380
www.sloanvalve.com

Copyright © 2009 Sloan Valve Company
10/09 Rev. 0

This space for Architect/Engineer approval

Job Name	Date
Model Specified	Quantity
Variations Specified	
Customer/Wholesaler	
Contractor	
Architect	

The information contained in this document is subject to change without notice.