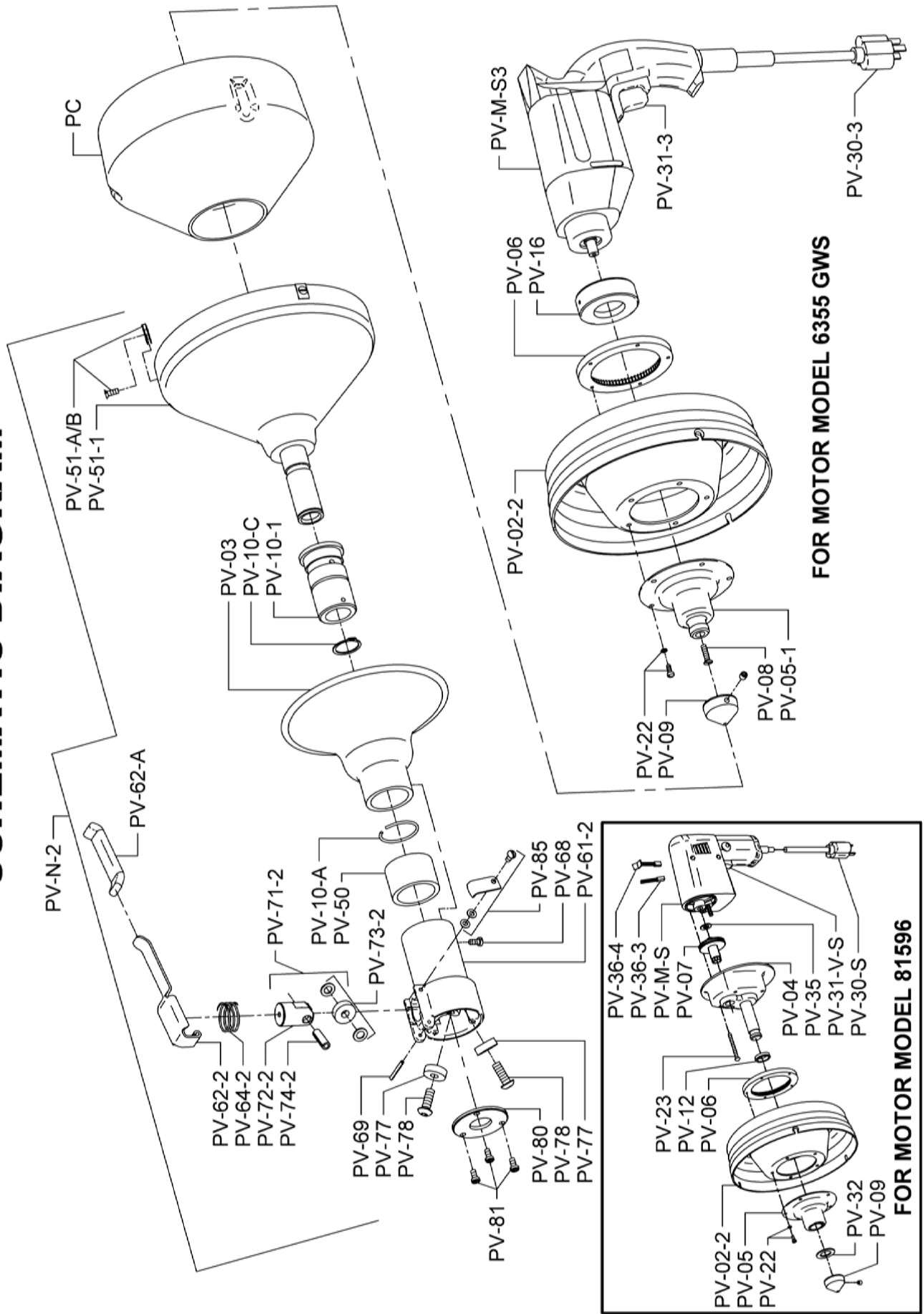


POWER-VEE PARTS LIST

CAT. NO.	DESCRIPTION	CAT. NO.	DESCRIPTION
PV-M-S	Skil Variable Speed Motor (Model #81596)	PV-36-3	Brush Spring & Brush - Discontinued
PV-M-S3	Skil Variable Speed Motor (Model #6355-GWS)	PV-36-4	Brush, Spring & Connector (2) (#81596 Type 3)
PV-N-2	Complete Power-Vee Front Assembly	PV-37	Handle Covers (#81596)
PV-51	Container Front (w/PV-51-A/B)	PV-37-1	Handle Covers (#6355-GWS)
* PV-51-1	Container Front - Gripperless	PV-39-3	Holder for Brush & Spring (2) (#81596)
PV-51-A/B	"U" Nuts & Flat Head Screws (3)	PV-39-5	Holder for Brush & Spring (2) (#6355-GWS)
PV-02	Container Back	* PV-50	Bushing
* PV-03	Grip Shield	* PV-61-2	Feed Housing
PV-04	Gear Case Body	PV-62-2	Feed Lever w/Sleeve
PV-05	Gear Case Cap	PV-62-A	Sleeve for PV-62-2
PV-05-1	Container Hub for Direct Drive	PV-63	Adjusting Knob
PV-06	Internal Ring Gear	PV-64	Tension Spring
PV-07	Pinion & Spindle Gear Assembly	PV-64-2	Tension Spring
PV-08	Reverse-Thread Screw for Direct Drive Unit	PV-65	Adjusting Nut
PV-09	Beveled Collar w/Set Screw	PV-66	Adjusting Screw
PV-10	Spindle Sleeve (Inc. PV-10-A)	PV-67	Set Screws & Washers (2)
* PV-10-1	Spindle Sleeve - Gripperless w/Retaining Ring	* PV-68	Philips Head Screw
PV-10-A	Spindle Sleeve Retaining Ring	* PV-69	Feed Lever Pin
PV-10-C	Snap Ring	PV-70	Inner Feed Body
PV-10-D	Spacer	PV-71	Feed Roller Assembly (Includes PV-72-2, 73, 74, 75)
PV-12	Thrust Washer	* PV-71-2	Feed Roller Assembly (Includes PV-64-2, 72-2, 73-2, 74-2)
PV-16	Thrust Bearing for Motor (#6355-GWS)	PV-72	Carrier
PV-22	Machine Screws w/Lock Washers (5)	PV-72-2	Carrier
PV-23	Fillister Head Screws (4)	PV-73	Feed Roller
PV-25	Cable Grippers (2)	PV-74	Feed Roller
PV-26	Screws w/Locktite (2)	PV-74-2	Shaft Pin
* PV-28	Collar w/Set Screw	PV-75	Shaft Pin
* PV-29	Lock Screw	* PV-77	Bottom Feed Roller (2)
PV-30-S	Cord Set (Model #81596)	* PV-78	Bottom Feed Roller Retaining Screw (2)
PV-30-3	Cord Set (Model #6355-GWS)	* PV-80	Bottom Roller Retaining Screw
PV-31-V-S	Variable Speed Trigger & Rev. Switch Assy. (Model #81596)	* PV-81	Plate Retaining Screw
PV-31-3	Variable Speed Trigger & Rev. Switch Assy. (Model #6355-GWS)	* PV-85	Feed Lever Retaining Latch, Screw & Washers
PV-32	Felt Washer	PV-700	Complete Feed Assembly
PV-33	Armature for Skil (#81596)	PV-703	Set of Roller Assemblies (3 x PV-71)
PV-33-1	Armature for Skil (#6355-GWS)	PV-703-2	Set of Roller Assemblies (PV-71-2, 2 x PV-77)
PV-34	Field for Skil (#81596)	PC	Plastic Cartridge
PV-34-1	Field for Skil (#6355-GWS)	MCC	Carrying Case
PV-35	Spacer Washer	PV-DECAL	Set of Safety Decals

* Part Number PV-N-2 includes all * parts.

POWER-VEE SCHEMATIC DIAGRAM



IMPORTANT: When ordering, give Serial Number of Machine.