

## Features

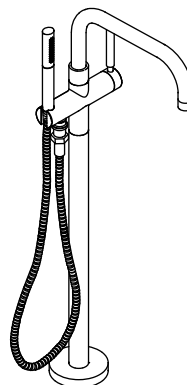
- Brass construction
- Floor mount installation
- 12-1/16" (306 mm) spout reach
- Non-laminar flow
- Integral valve
- Includes handshower
- Includes aerator, hardware kit, and escutcheon
- Complements Purist® Suite

## Codes/Standards Applicable

Specified model meets or exceeds the following:

- ASME A112.18.1/CSA B125.1
- ASSE 1014

## FLOOR MOUNT BATH FILLER WITH HANDSHOWER K-10129-4



## Colors/Finishes

- CP: Polished Chrome

## Specified Model

Model	Description	Colors/Finishes
K-10129-4	Floor-mount bath filler with handshower	<input type="checkbox"/> CP

## Product Specification

The floor-mount bath filler shall be made of brass construction. Product shall be floor-mount installation. Product shall have 12-1/16" (306 mm) spout reach. Product shall have a non-laminar flow. Bath filler shall include handshower, aerator, hardware kit, and escutcheon. Product shall have an integral valve. Product shall complement Purist suite. Bath filler shall be Kohler Model K-10129-4-CP.

# PURIST®

## Installation Notes

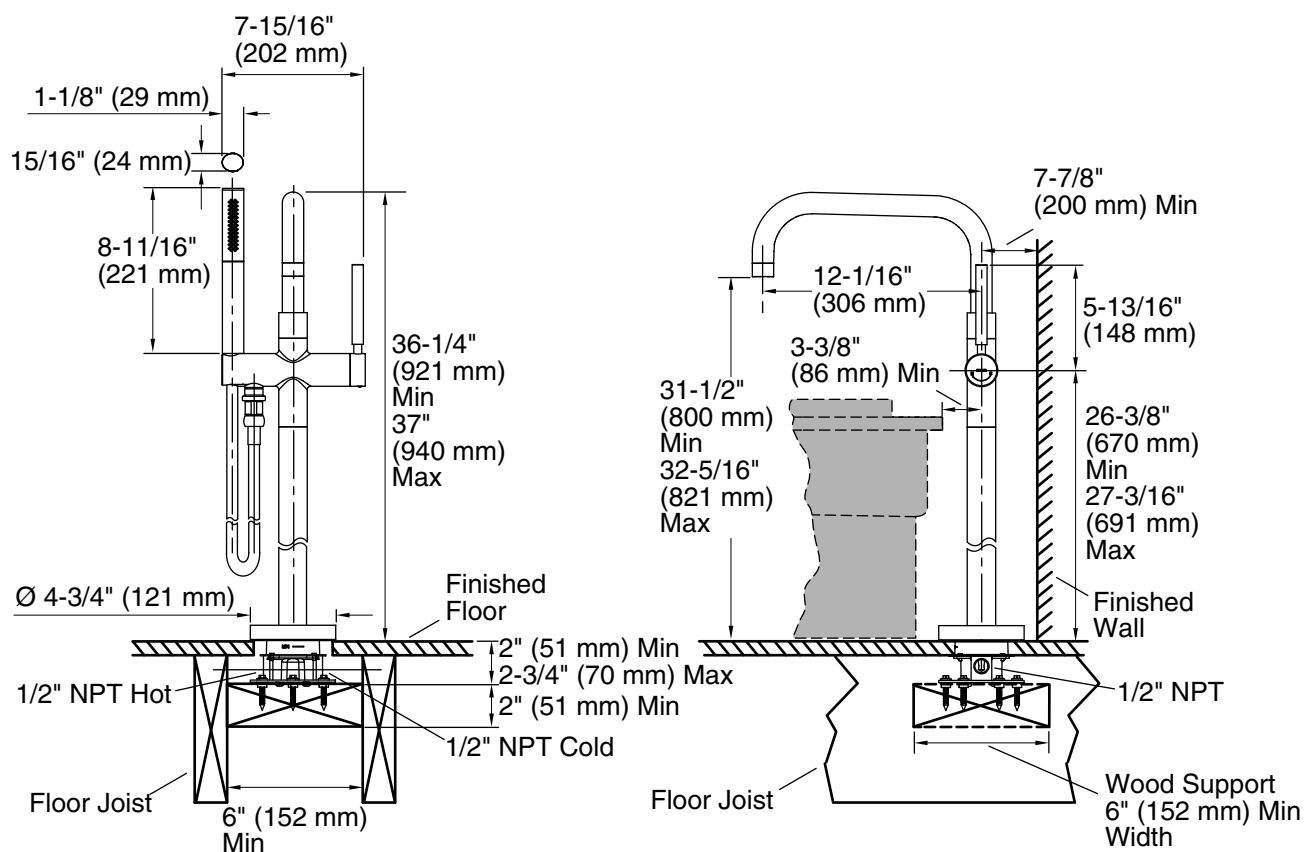
Install this product according to the installation guide.



**WARNING: Risk of personal injury.** Do not use the bath filler as a grab bar or support bar when entering or exiting the bath. The bath filler is not designed to support weight.

**NOTICE:** Adequate floor support is required. The wood support must be a minimum of 2" (51 mm) thick by 6" (152 mm) wide. **2x6 lumber is NOT adequate for this application.**

Consult local codes for the appropriate air gap requirements.



## Product Diagram

PURIST® FLOOR MOUNT BATH FILLER WITH HANDSHOWER

Page 2 of 2  
1144501-4-C

THE BOLD LOOK  
OF **KOHLER®**