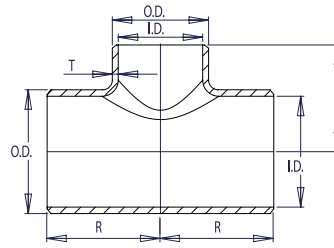


REDUCING TEES



SCHEDULE STD



WELDBEND NOTES

1. Conforms to ASME B16.9 & ASTM A234 WPB.
 2. All dimensions are in inches.
 3. For bevel detail see page 107.
 4. For dimensional tolerances see page 108.
 5. For sizes larger than 48" please call.
 6. All weights are in pounds and approximated or estimated.
- * This size and thickness does not correspond to any pipe schedule number.
 ♦ In accordance with B16.9. Special Fittings paragraph 4.4.2.

FITTINGS

| Pipe Size | DIMENSIONS OF RUN | | | | DIMENSIONS OF BRANCH | | | | Pipe Schedule Number | Approx. Weight in Pounds |
|---------------|-------------------|-----------------|----------------|---------------|----------------------|-----------------|----------------|---------------|----------------------|--------------------------|
| | Outside Diameter | Inside Diameter | Wall Thickness | Center to End | Outside Diameter | Inside Diameter | Wall Thickness | Center to End | | |
| | O.D. | I.D. | T | R | O.D. | I.D. | T | B | | |
| 3/4 x 1/2 | 1.05 | 0.824 | 0.113 | 1.12 | 0.84 | 0.622 | 0.109 | 1.12 | 40 | 0.41 |
| 1 x 3/4 | 1.32 | 1.049 | 0.133 | 1.50 | 1.05 | 0.824 | 0.113 | 1.50 | 40 | 0.81 |
| 1 x 1/2 | 1.32 | 1.049 | 0.133 | 1.50 | 0.84 | 0.622 | 0.109 | 1.50 | 40 | 0.78 |
| 1 1/4 x 1 | 1.66 | 1.380 | 0.140 | 1.88 | 1.32 | 1.049 | 0.133 | 1.88 | 40 | 1.30 |
| 1 1/4 x 3/4 | 1.66 | 1.380 | 0.140 | 1.88 | 1.05 | 0.824 | 0.113 | 1.88 | 40 | 1.30 |
| 1 1/4 x 1/2 | 1.66 | 1.380 | 0.140 | 1.88 | 0.84 | 0.622 | 0.109 | 1.88 | 40 | 1.30 |
| 1 1/2 x 1 1/4 | 1.90 | 1.610 | 0.145 | 2.25 | 1.66 | 1.380 | 0.140 | 2.25 | 40 | 2.00 |
| 1 1/2 x 1 | 1.90 | 1.610 | 0.145 | 2.25 | 1.32 | 1.049 | 0.133 | 2.25 | 40 | 1.90 |
| 1 1/2 x 3/4 | 1.90 | 1.610 | 0.145 | 2.25 | 1.05 | 0.824 | 0.113 | 2.25 | 40 | 1.80 |
| 1 1/2 x 1/2 | 1.90 | 1.610 | 0.145 | 2.25 | 0.84 | 0.622 | 0.109 | 2.25 | 40 | 1.80 |
| 2 x 1 1/2 | 2.38 | 2.067 | 0.154 | 2.50 | 1.90 | 1.610 | 0.145 | 2.38 | 40 | 3.10 |
| 2 x 1 1/4 | 2.38 | 2.067 | 0.154 | 2.50 | 1.66 | 1.380 | 0.140 | 2.25 | 40 | 3.00 |
| 2 x 1 | 2.38 | 2.067 | 0.154 | 2.50 | 1.32 | 1.049 | 0.133 | 2.00 | 40 | 2.80 |
| 2 x 3/4 | 2.38 | 2.067 | 0.154 | 2.50 | 1.05 | 0.824 | 0.113 | 1.75 | 40 | 2.50 |
| 2 1/2 x 2 | 2.88 | 2.469 | 0.203 | 3.00 | 2.38 | 2.067 | 0.154 | 2.75 | 40 | 5.40 |
| 2 1/2 x 1 1/2 | 2.88 | 2.469 | 0.203 | 3.00 | 1.90 | 1.610 | 0.145 | 2.62 | 40 | 5.10 |
| 2 1/2 x 1 1/4 | 2.88 | 2.469 | 0.203 | 3.00 | 1.66 | 1.380 | 0.140 | 2.50 | 40 | 4.80 |
| 2 1/2 x 1 | 2.88 | 2.469 | 0.203 | 3.00 | 1.32 | 1.049 | 0.133 | 2.25 | 40 | 4.60 |
| 3 x 2 1/2 | 3.50 | 3.068 | 0.216 | 3.38 | 2.88 | 2.469 | 0.203 | 3.25 | 40 | 7.20 |
| 3 x 2 | 3.50 | 3.068 | 0.216 | 3.38 | 2.38 | 2.067 | 0.154 | 3.00 | 40 | 7.00 |
| 3 x 1 1/2 | 3.50 | 3.068 | 0.216 | 3.38 | 1.90 | 1.610 | 0.145 | 2.88 | 40 | 6.80 |
| 3 x 1 1/4 | 3.50 | 3.068 | 0.216 | 3.38 | 1.66 | 1.380 | 0.140 | 2.75 | 40 | 6.60 |
| ❖ 3 x 1 | 3.50 | 3.068 | 0.216 | 3.38 | 1.32 | 1.049 | 0.133 | 2.62 | 40 | 6.50 |
| 3 1/2 x 3 | 4.00 | 3.548 | 0.226 | 3.75 | 3.50 | 3.068 | 0.216 | 3.62 | 40 | 9.80 |
| 3 1/2 x 2 1/2 | 4.00 | 3.548 | 0.226 | 3.75 | 2.88 | 2.474 | 0.203 | 3.50 | 40 | 9.40 |
| 3 1/2 x 2 | 4.00 | 3.548 | 0.226 | 3.75 | 2.38 | 2.072 | 0.154 | 3.25 | 40 | 9.20 |
| 3 1/2 x 1 1/2 | 4.00 | 3.548 | 0.226 | 3.75 | 1.90 | 1.610 | 0.145 | 3.12 | 40 | 8.90 |
| 4 x 3 1/2 | 4.50 | 4.026 | 0.237 | 4.12 | 4.00 | 3.548 | 0.226 | 4.00 | 40 | 11.90 |
| 4 x 3 | 4.50 | 4.026 | 0.237 | 4.12 | 3.50 | 3.068 | 0.216 | 3.88 | 40 | 11.60 |
| 4 x 2 1/2 | 4.50 | 4.026 | 0.237 | 4.12 | 2.88 | 2.469 | 0.203 | 3.75 | 40 | 11.40 |
| 4 x 2 | 4.50 | 4.026 | 0.237 | 4.12 | 2.38 | 2.067 | 0.154 | 3.50 | 40 | 11.20 |
| 4 x 1 1/2 | 4.50 | 4.026 | 0.237 | 4.12 | 1.90 | 1.610 | 0.145 | 3.38 | 40 | 11.20 |
| 5 x 4 | 5.56 | 5.047 | 0.258 | 4.88 | 4.50 | 4.026 | 0.237 | 4.62 | 40 | 20.50 |
| 5 x 3 1/2 | 5.56 | 5.047 | 0.258 | 4.88 | 4.00 | 3.548 | 0.226 | 4.50 | 40 | 20.00 |
| 5 x 3 | 5.56 | 5.047 | 0.258 | 4.88 | 3.50 | 3.068 | 0.216 | 4.38 | 40 | 19.40 |
| 5 x 2 1/2 | 5.56 | 5.047 | 0.258 | 4.88 | 2.88 | 2.469 | 0.203 | 4.25 | 40 | 19.00 |
| 5 x 2 | 5.56 | 5.047 | 0.258 | 4.88 | 2.38 | 2.067 | 0.154 | 4.12 | 40 | 18.80 |
| 6 x 5 | 6.62 | 6.065 | 0.280 | 5.62 | 5.56 | 5.047 | 0.258 | 5.38 | 40 | 32.00 |
| 6 x 4 | 6.62 | 6.065 | 0.280 | 5.62 | 4.50 | 4.026 | 0.237 | 5.12 | 40 | 30.50 |
| 6 x 3 1/2 | 6.62 | 6.065 | 0.280 | 5.62 | 4.00 | 3.548 | 0.226 | 5.00 | 40 | 30.00 |
| 6 x 3 | 6.62 | 6.065 | 0.280 | 5.62 | 3.50 | 3.068 | 0.216 | 4.88 | 40 | 30.00 |
| 6 x 2 1/2 | 6.62 | 6.065 | 0.280 | 5.62 | 2.88 | 2.469 | 0.203 | 4.75 | 40 | 29.70 |
| ❖ 6 x 2 | 6.62 | 6.065 | 0.280 | 5.62 | 2.38 | 2.067 | 0.154 | 4.75 | 40 | 29.00 |
| 8 x 6 | 8.62 | 7.981 | 0.322 | 7.00 | 6.62 | 6.065 | 0.280 | 6.62 | 40 | 56.50 |
| 8 x 5 | 8.62 | 7.981 | 0.322 | 7.00 | 5.56 | 5.047 | 0.258 | 6.38 | 40 | 54.00 |
| 8 x 4 | 8.62 | 7.981 | 0.322 | 7.00 | 4.50 | 4.026 | 0.237 | 6.12 | 40 | 53.20 |

BOX QUANTITIES



FITTINGS

| Box Quantities Size / Wall | Short Radius 90° Elbows | | Long Radius 90° Elbows | | Straight Tees | | Caps | |
|-------------------------------|-------------------------|----|------------------------|-------|---------------|-------|-------|-------|
| | STD | XS | STD | XS | STD | XS | STD | XS |
| ½" | — | — | 6-bag | 6-bag | 6-bag | 6-bag | — | — |
| ¾" | — | — | 4-bag | 4-bag | 6-bag | 6-bag | 6-bag | 6-bag |
| 1" | — | — | 4-bag | 4-bag | 6-bag | 6-bag | 6-bag | 6-bag |
| 1 ¼" | — | — | 12 | 4-bag | 6-bag | 6-bag | 6-bag | 6-bag |
| 1 ½" | — | — | 12 | 4-bag | 6-bag | 6-bag | 6-bag | 6-bag |
| 2" | — | — | 12 | 12 | — | — | 12 | 12 |
| 2 ½" | — | — | 12 | 12 | 12 | — | 12 | 12 |
| 3" | — | — | 12 | 12 | 6 | — | 12 | 12 |
| 3 ½" | — | — | 8 | 8 | — | — | — | — |
| 4" | — | — | 12 | 12 | 6 | — | 12 | 12 |
| 5" | — | — | 6 | 6 | — | — | 6 | 6 |
| 6" | — | — | 4 | 4 | 4 | — | 6 | 6 |
| 8" | — | — | 1 | 1 | — | — | 4 | 4 |
| 10" | — | — | 1 | 1 | — | — | 2 | 2 |
| 12" | — | — | 1 | 1 | — | — | 2 | 2 |

| Box Quantities Size / Wall | Reducing Tees | | Concentric Reducers | | Eccentric Reducers | |
|-------------------------------|---------------|-------|---------------------|----|--------------------|----|
| | STD | XS | STD | XS | STD | XS |
| ¾ x ½" | 6-bag | 6-bag | — | — | — | — |
| 1 x ½" | 6-bag | 6-bag | — | — | — | — |
| 1 x ¾" | 6-bag | 6-bag | — | — | — | — |
| 1 ¼ x ½" | 6-bag | 6-bag | — | — | — | — |
| 1 ¼ x 1" | 6-bag | 6-bag | — | — | — | — |
| 1 ½ x ½" | 6-bag | 6-bag | — | — | — | — |
| 1 ½ x ¾" | 6-bag | 6-bag | — | — | — | — |
| 1 ½ x 1" | 6-bag | 6-bag | — | — | — | — |
| 1 ½ x 1 ¼" | 6-bag | 6-bag | — | — | — | — |
| 2 x 1" | — | — | 12 | 12 | 12 | — |
| 2 x 1 ¼" | — | — | 12 | 12 | 12 | — |
| 2 x 1 ½" | — | — | 12 | 12 | 12 | — |
| 2 ½ x 1 ¼" | — | — | 12 | 12 | 12 | — |
| 2 ½ x 1 ½" | — | — | 12 | 12 | 12 | — |
| 2 ½ x 2" | — | — | 12 | 12 | 12 | — |
| 3 x 1 ½" | — | — | 12 | 12 | 12 | — |
| 3 x 2" | — | — | 12 | 12 | 12 | — |
| 3 x 2 ½" | — | — | 12 | 12 | 12 | — |
| 4 x 2" | 6 | — | 12 | 12 | 12 | — |
| 4 x 2 ½" | 6 | — | 12 | 12 | 12 | — |
| 4 x 3" | 6 | — | 12 | 12 | 12 | — |
| 5 x 2 ½" | — | — | 6 | 6 | 6 | — |
| 5 x 3" | — | — | 6 | 6 | 6 | — |
| 5 x 4" | — | — | 6 | 6 | 6 | — |
| 6 x 3" | — | — | 6 | 6 | 6 | — |
| 6 x 4" | — | — | 6 | 6 | 6 | — |
| 6 x 5" | — | — | 6 | 6 | 6 | — |