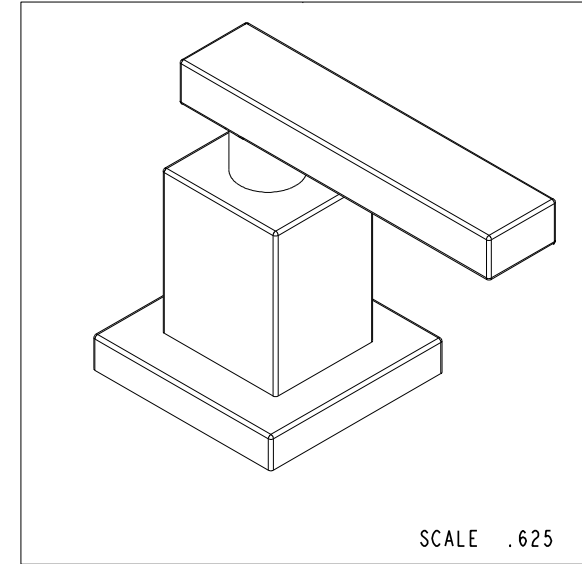
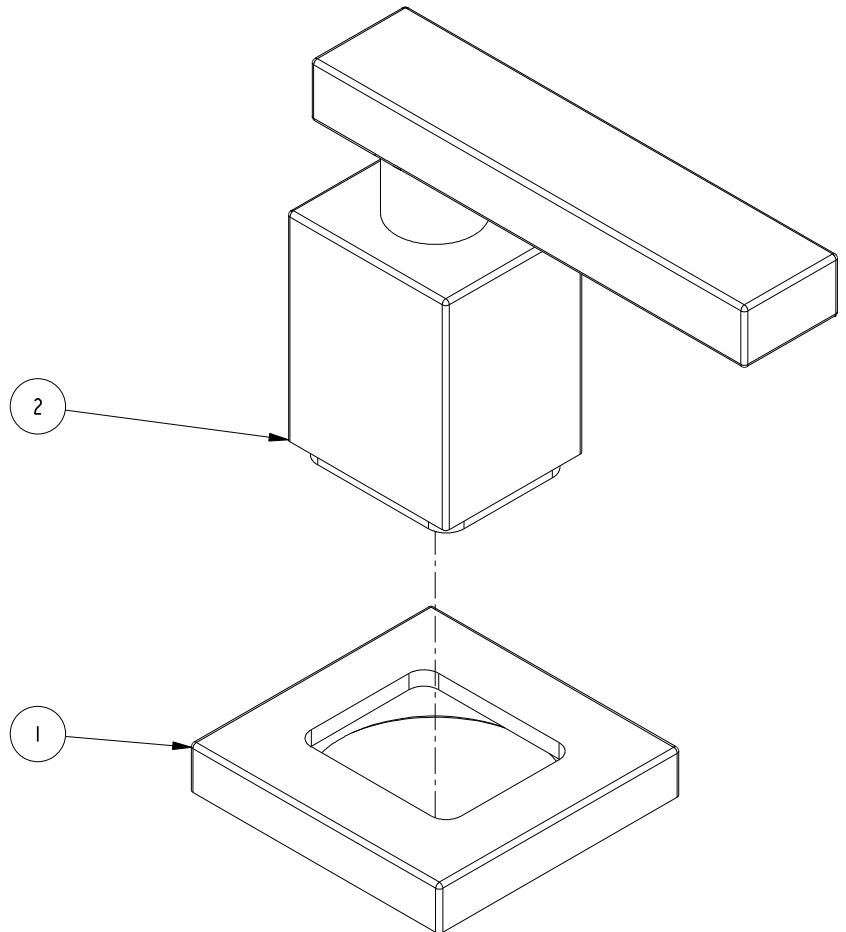


NOTES:

1. TO INSPECT ASSEMBLY, FOLLOW FIRST ARTICLE AND IN PROCESS INSPECTION SHEET.

**BILL OF MATERIAL (CURRENT LEVEL)**

ITEM	PT/ASSY	DESCRIPTION	TYPE	QTY.
1	2-936	HANDLE ESCUTCHEON ASM	ASSEMBLY	1
2	2-612	HANDLE ASSEMBLY	ASSEMBLY	1



-	D	EN-4300j	12/16/20	R. S.
-	C	EN-2541-1	09/06/14	-
-	B	EN-1511	03/18/10	-
-	A	EN-1493	03/05/10	-
-	-	EN-1265	10/30/09	-
ZONE	REV	DESCRIPTION	DATE	APPROVED

COPYRIGHT 2005 BRASSTECH, INC. THESE DRAWINGS AND THE DESIGNS DEPICTED HEREIN ARE THE PROPRIETARY PROPERTY OF BRASSTECH. ANY USE OR REPRODUCTION IS SUBJECT TO THE EXPRESS APPROVAL OF BRASSTECH. UNAUTHORIZED USE IS STRICTLY PROHIBITED. ALL RIGHTS RESERVED.

TESTING	-	-	-
ASSEMBLY	-	-	-
PLATING	-		
POLISHING	-	NEXT ASSY	USED ON
MACHINING	-	APPLICATION	
TOOLING FIXTURE #		REMOVE ALL BURRS AND SHARP EDGES	

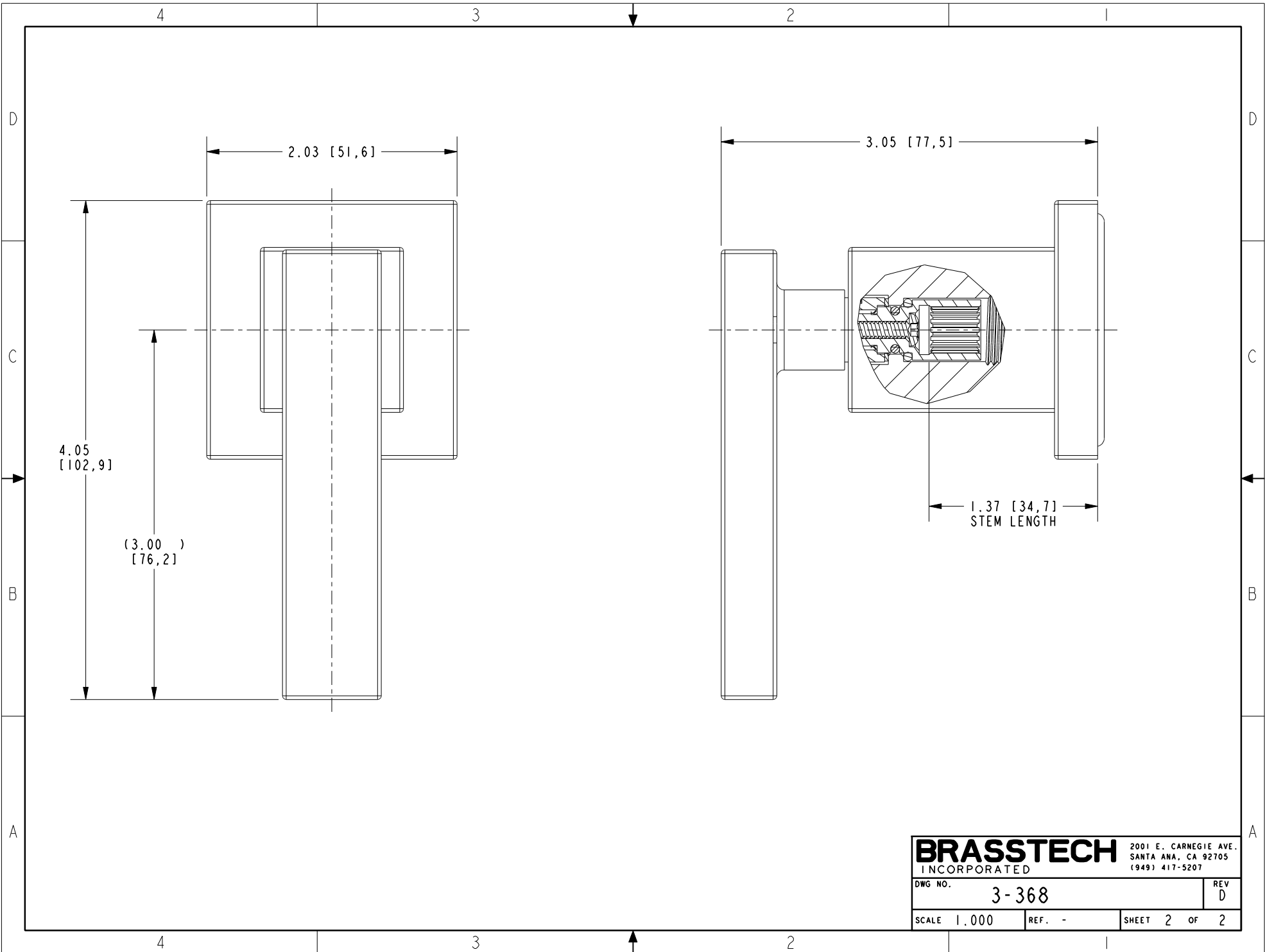
UNITS ARE: INCHES [MM]  
 TOLERANCES ARE:  
 FRACTIONS DECIMALS ANGLES  
 $\pm 1/16"$  .X  $\pm .1$  [2.5]  $\pm 1^\circ$   
 .XX  $\pm .06$  [1.5]  
 (X.XXX) DENOTES CRITICAL DIMS.  
 ALL THREADS ARE CRITICAL

**BRASSTECH**  
 INCORPORATED

2001 CARNEGIE AVE.  
 SANTA ANA, CA 92705  
 (949) 417-5207

**HANDLE AND ESCUTCHEON  
 ASSEMBLY**

DWG NO.	3-368	REV	D
SCALE	.875	REF.	-
SHEET	1	OF	2



**BRASSTECH** 2001 E. CARNEGIE AVE.  
 INCORPORATED SANTA ANA, CA 92705  
 (949) 417-5207

DWG NO.	3-368	REV	D
---------	-------	-----	---

SCALE	1.000	REF.	-	SHEET	2	OF	2
-------	-------	------	---	-------	---	----	---