

AZURE® Digi-Motor®

PTAC-ECM Motor

The Azure double shaft PTAC-ECM motor is a high efficiency motor for direct replacement for shaded pole and PSC motors used in a wide range of fan coil assemblies and PTAC applications as an energy saving retrofit.



Applications:

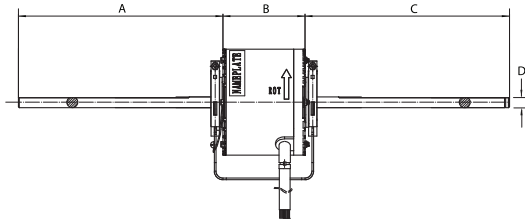
Fan Coils, Air Conditioners, Blowers, Shaded Pole, PTAC Units

Features:

- Energy efficient
- Includes resilient mounting base
- 42 Frame

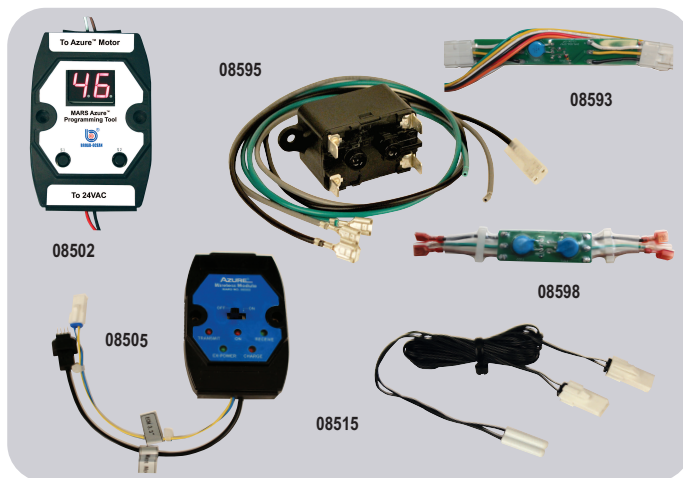
Specifications:

- Class "B" insulation
- Single phase, 50/60 Hz
- Electronic overload protection
- Continuous duty
- 54 inch leads



MARS NO.	HP	VOLTS	RPM	AMPS	SPEEDS	DIMENSIONS			
						A	B	C	D
10830	1/10	115/230/277	700 - 1100	1.31/0.75/0.65	5	9.33	3.74	9.33	1/2

Accessories for Azure® Digi-Motor®



MARS NO.	DESCRIPTION
08502	Hand Held Programmer 10860/10861/10867
08593	Replacement Surge Protector 10860/10861
08595	Constant Fan Kit 10860/10861
08598	Replacement Surge Protector 10870/10872/10874/10875
08505	Wireless Programmer Kit; Requires Azure Programmer App and Smart Device (sold separately) for 10891; Controls up to 5 Motors
08515	Thermistor Kit for 2-Speed Operation (2/PK) for 10852; Controls up to 5 Motors

Outdoor Condenser Fan Motors

MARS all angle outdoor condenser fan motors are designed for either shaft-up or shaft-down applications. End shields are enclosed for weather protection. A weep hole is provided in each end shield to allow condensate to drain. All of these motors are suitable for air conditioning or heat pump applications.

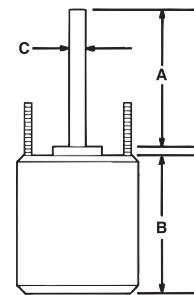


Features:

- All angle, sleeve or ball bearing
- Rheem mounting holes w/screws installed
- Water slinger on shaft
- Thru bolt or band mounting
- Capacitor requirement noted on motor label
- Double full flatted shaft

Specifications:

- Class "B" insulation
- Single phase, 60 Hertz
- Thermal overload protected
- Fan duty, continuous, air over
- Totally enclosed
- 36 inch leads
- UL Recognized



Reversible Rotation – Single Speed

MARS NO.	HP	VOLTS	AMPS	CAP REQ.	ENCL.	BRG.	DIMENSIONS		
							A	B	C
1075 RPM									
10725	1/8	208-230	0.72	5/370	TEAO	Sleeve	6.50	4.12	1/2
10727	1/6	208-230	0.90	5/370	TEAO	Sleeve	6.50	4.23	1/2
10726	1/5	208-230	1.17	5/370	TEAO	Sleeve	6.50	4.12	1/2
10728	1/4	208-230	1.8	5/370	TEAO	Sleeve	6.50	4.23	1/2
10729	1/3	208-230	2.4	7.5/370	TEAO	Sleeve	6.50	5.23	1/2
10730	1/2	208-230	3.5	10/370	TEAO	Sleeve	6.50	5.73	1/2
10731	3/4	208-230	5.2	10/370	TEAO	Ball	6.50	6.23	1/2

MARS NO.	HP	VOLTS	AMPS	CAP REQ.	ENCL.	BRG.	DIMENSIONS		
							A	B	C
825 RPM									
10411	1/8	208-230	0.80	5/370	TEAO	Sleeve	6.50	4.13	1/2
10403	1/6	208-230	1.0	5/370	TEAO	Sleeve	6.50	4.23	1/2
10412	1/5	208-230	1.3	5/370	TEAO	Sleeve	6.50	4.40	1/2
10404	1/4	208-230	2.2	5/370	TEAO	Sleeve	6.50	4.48	1/2
10405	1/3	208-230	1.9	7.5/370	TEAO	Sleeve	6.50	5.23	1/2
10746	1/2	208-230	2.8	12.5/370	TEAO	Sleeve	6.50	5.70	1/2