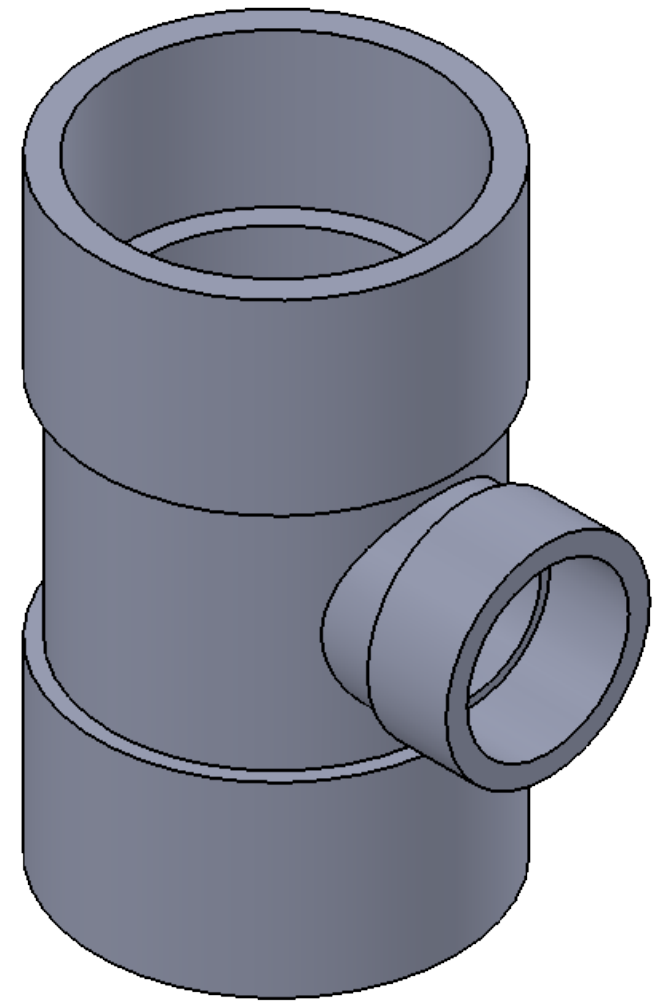
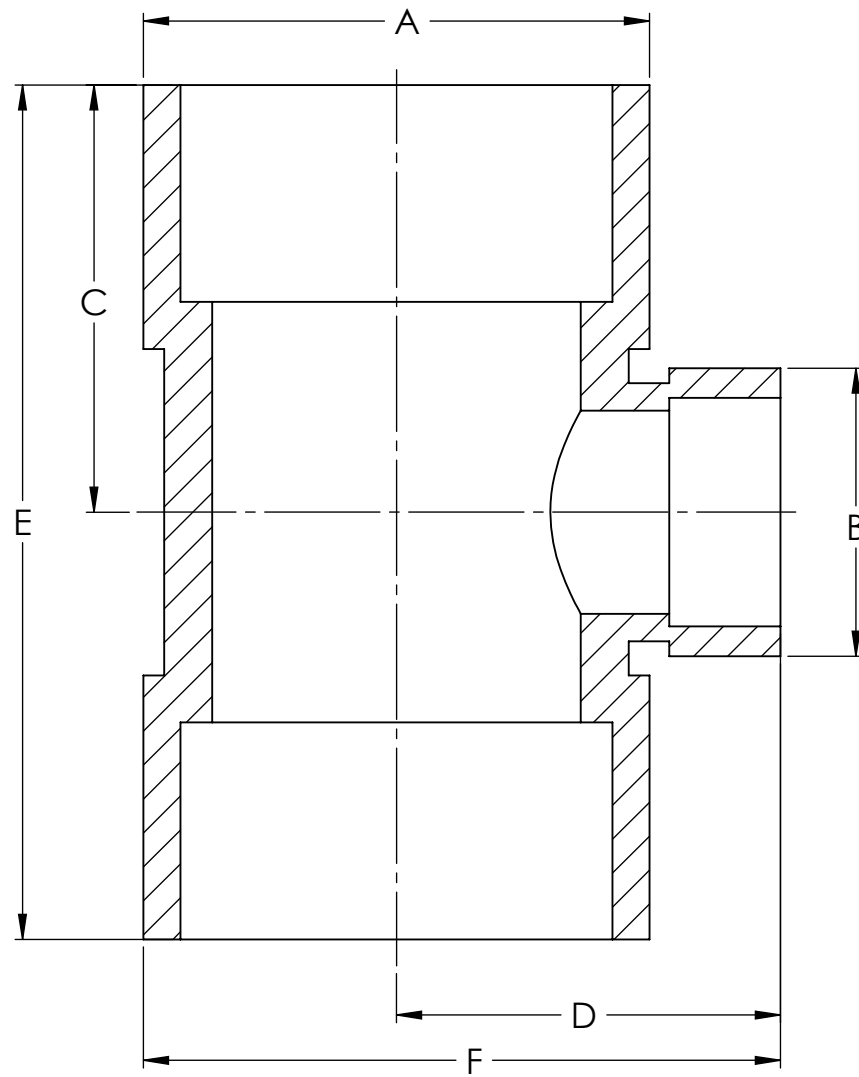
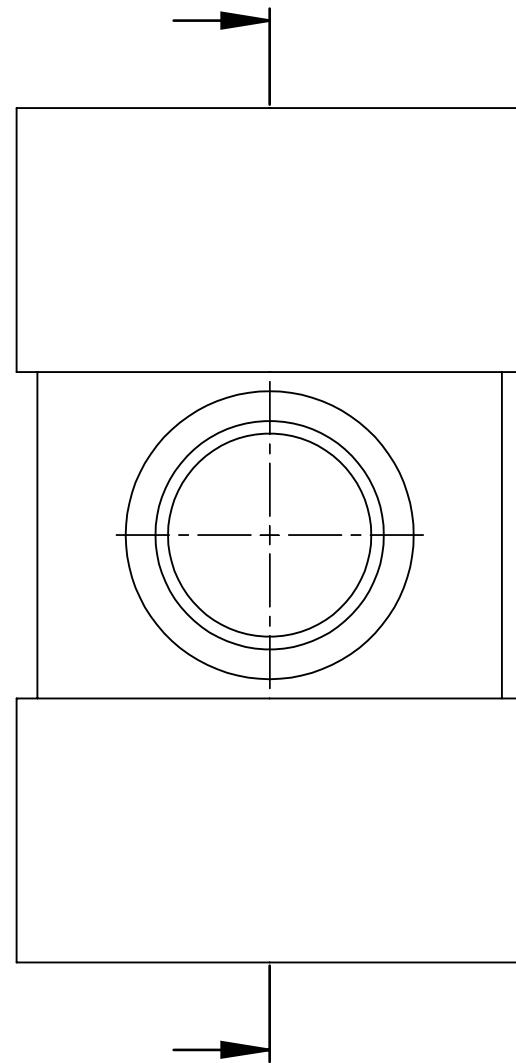


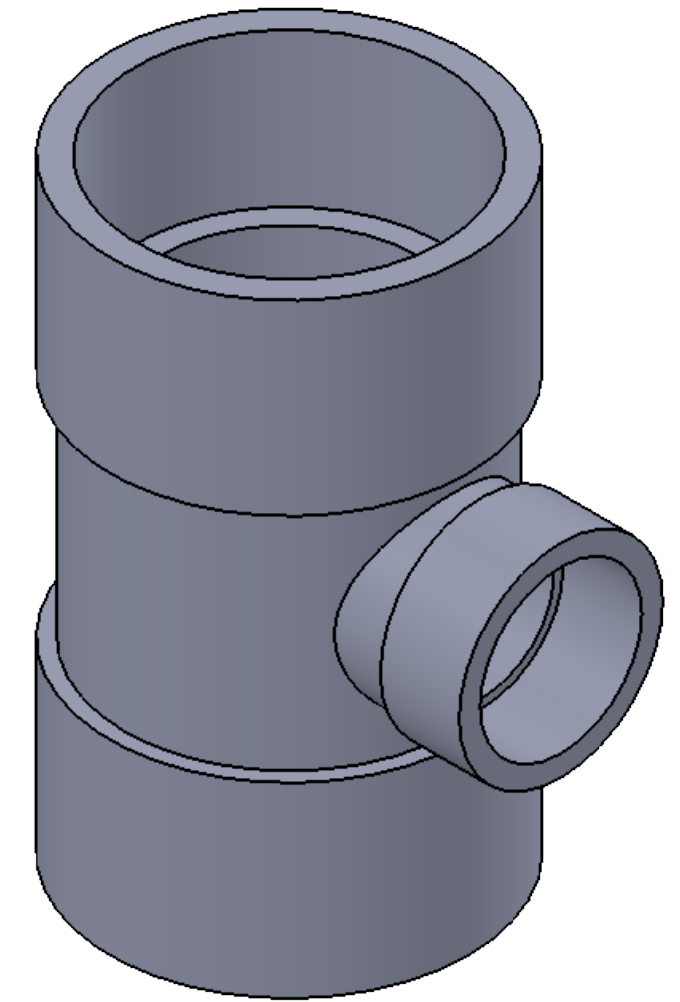
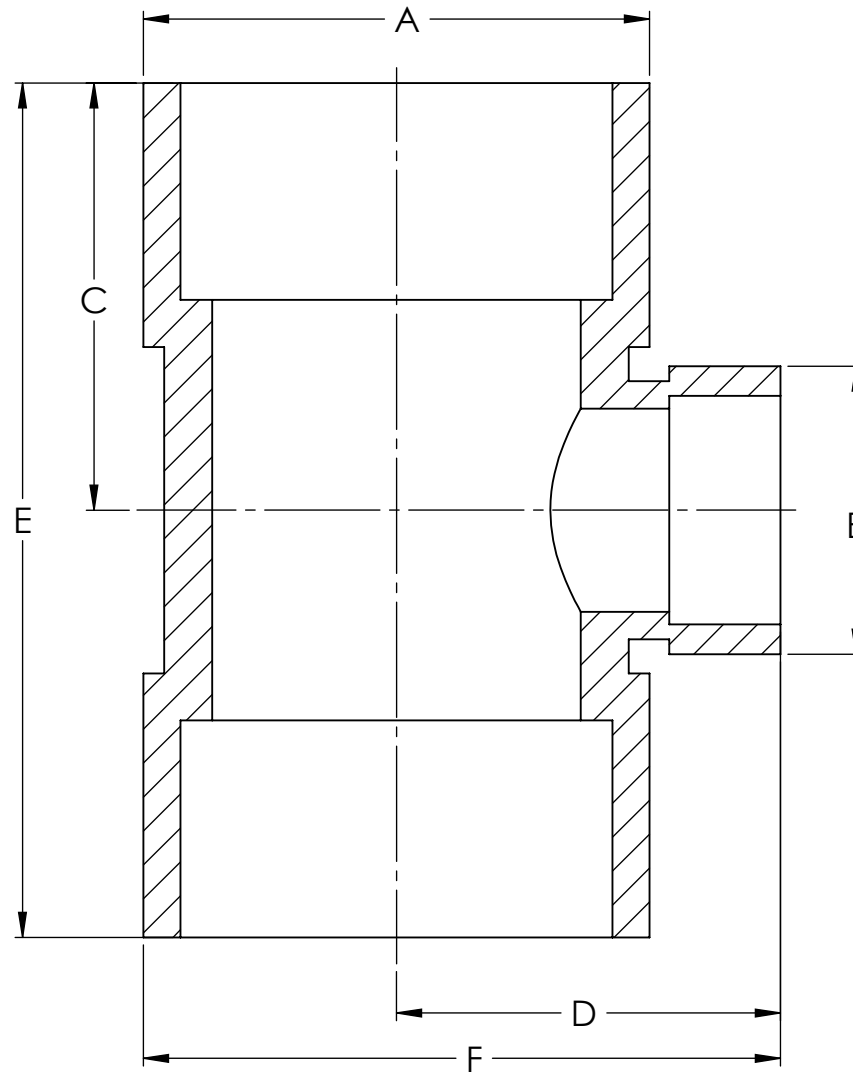
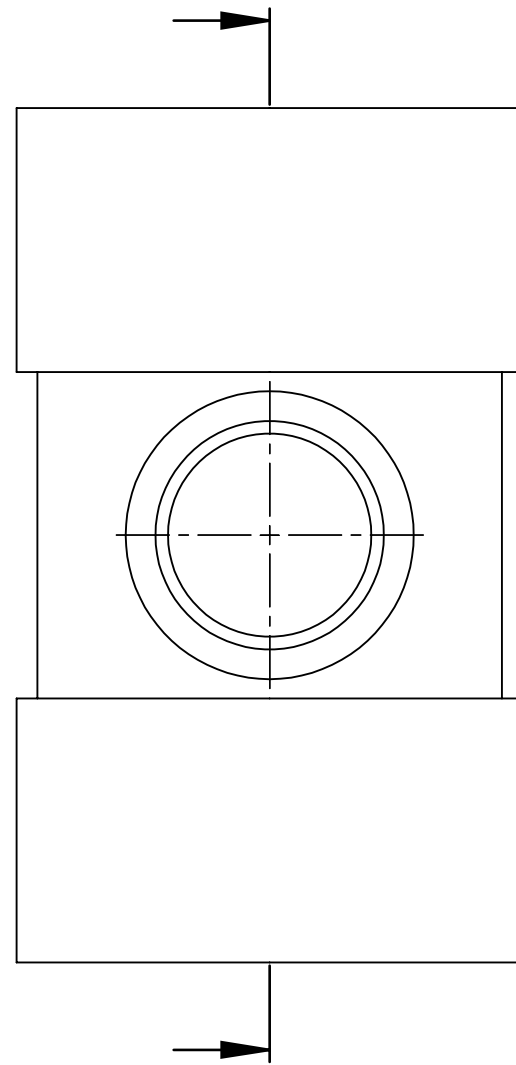
Part No.	Nom. Size	A in [mm]	B in [mm]	C in [mm]	D in [mm]	E in [mm]
197486	2	3 [76]	2.8 [71]	2.8 [71]	5.6 [142]	4.3 [109]
197488	3	4.2 [107]	3.9 [99]	3.9 [99]	7.7 [196]	6.0 [152]
197489	4	5.4 [137]	4.7 [119]	4.7 [119]	9.4 [239]	7.4 [188]
197490	6	7.6 [193]	6.5 [165]	6.5 [165]	13 [330]	10.3 [262]
197491	8	9.8 [249]	8.7 [221]	8.7 [221]	17.3 [439]	13.7 [348]

SIZES SHOWN ARE FOR REFERENCE 3D MODEL IS TO BE USED FOR MANUFACTURING / VERIFICATION		PLASTIC/RUBBER SIZES	
ALL CHANGES MUST BE APPROVED AND RECORDED BY ENGINEERING			
UNIT: INCHES UNLESS DUAL DIMENSION: INCH [METRIC]	PROJECTION 		
THIS DRAWING AND ALL TECHNICAL INFORMATION APPEARING HEREON ARE PROPERTY OF IPEX TECHNOLOGIES INC. AND MUST BE KEPT IN CONFIDENCE BY THE RECIPIENT. THE SAME MAY NOT BE USED OR REPRODUCED EITHER IN WHOLE OR IN PART WITHOUT THE EXPRESS CONSENT OF IPEX TECHNOLOGIES INC.		TITLE CPVC FGVT H x H x H	
PAPER SIZE ANSI B	NAME Paul Joo	DATE 13/02/2018	SCALE: 1:5
PART APPEARANCE:	COLOR:	DRAWN	MATL: CPVC
SURFACE FINISHES: (UNLESS OTHERWISE NOTED)		APPD	PRODUCT CODE:
INSIDE:	OUTSIDE:	OTHER:	PROJECT No.
DIMENSIONS ARE IN INCHES TOLERANCES (UNLESS OTHERWISE SPECIFIED) FRACTIONAL ± 1/32 X.X ± 0.015 X.XX ± 0.010 X.XXX ± 0.005 ANGULAR ± 1.0		CRITICAL DIMENSIONS ARE SHOWN AS **DIM** REFERENCE DIMENSIONS ARE SHOWN WITH REF. NOTE	
FILENAME:	FOLDER:		



Part No.	Nom. Size	A in [mm]	B in [mm]	C in [mm]	D in [mm]	E in [mm]	F in [mm]
197502	3 x 2	4.2 [107]	3 [76]	3.7 [94]	3.3 [84]	7.3 [185]	5.4 [137]
197504	4 x 2	5.3 [135]	3 [76]	4.5 [114]	4 [102]	8.9 [226]	6.6 [168]

SIZES SHOWN ARE FOR REFERENCE 3D MODEL IS TO BE USED FOR MANUFACTURING / VERIFICATION		PLASTIC/RUBBER SIZES	
ALL CHANGES MUST BE APPROVED AND RECORDED BY ENGINEERING			
UNIT: INCHES UNLESS DUAL DIMENSION: INCH [METRIC]	PROJECTION 		
THIS DRAWING AND ALL TECHNICAL INFORMATION APPEARING HEREON ARE PROPERTY OF IPEX TECHNOLOGIES INC. AND MUST BE KEPT IN CONFIDENCE BY THE RECIPIENT. THE SAME MAY NOT BE USED OR REPRODUCED EITHER IN WHOLE OR IN PART WITHOUT THE EXPRESS CONSENT OF IPEX TECHNOLOGIES INC.		TITLE CPVC FGV T H x H x H	
PAPER SIZE ANSI B	NAME Paul Joo	DATE 13/02/2018	SCALE: 1:5
PART APPEARANCE:	COLOR:	DRAWN	MATL: CPVC
SURFACE FINISHES: (UNLESS OTHERWISE NOTED)		APPD	PRODUCT CODE:
INSIDE:	(UNLESS OTHERWISE SPECIFIED)	DIMENSIONS ARE IN INCHES TOLERANCES	CRITICAL DIMENSIONS ARE SHOWN AS **DIM**
OUTSIDE:	FRACTIONAL	± 1/32	REFERENCE DIMENSIONS ARE SHOWN WITH REF. NOTE
OTHER:	X.X	± 0.015	
	X.XX	± 0.010	
	X.XXX	± 0.005	
	ANGULAR	± 1.0	PROJECT No.
FILENAME:	FOLDER:		



Part No.	Nom. Size	A in [mm]	B in [mm]	C in [mm]	D in [mm]	E in [mm]	F in [mm]
197506	6 x 6 x 4	7.5 [190]	5.3 [135]	5.8 [147]	5.8 [147]	11.7 [297]	9.5 [241]
197567	8 x 8 x 6	9.8 [249]	7.6 [193]	7.7 [196]	7.7 [196]	15.4 [391]	12.6 [320]

SIZES SHOWN ARE FOR REFERENCE 3D MODEL IS TO BE USED FOR MANUFACTURING / VERIFICATION		PLASTIC/RUBBER SIZES	
ALL CHANGES MUST BE APPROVED AND RECORDED BY ENGINEERING			
UNIT: INCHES UNLESS DUAL DIMENSION: INCH [METRIC]	PROJECTION 		
THIS DRAWING AND ALL TECHNICAL INFORMATION APPEARING HEREON ARE PROPERTY OF IPEX TECHNOLOGIES INC. AND MUST BE KEPT IN CONFIDENCE BY THE RECIPIENT. THE SAME MAY NOT BE USED OR REPRODUCED EITHER IN WHOLE OR IN PART WITHOUT THE EXPRESS CONSENT OF IPEX TECHNOLOGIES INC.		TITLE CPVC FGV T S x S x S	
PAPER SIZE ANSI B	NAME Paul Joo	DATE 13/02/2018	SCALE: 1:5
PART APPEARANCE:	COLOR:	DRAWN	MATL: CPVC
SURFACE FINISHES: (UNLESS OTHERWISE NOTED)		APP'D	PRODUCT CODE:
INSIDE:	(UNLESS OTHERWISE SPECIFIED)	DIMENSIONS ARE IN INCHES TOLERANCES	CRITICAL DIMENSIONS ARE SHOWN AS **DIM**
OUTSIDE:	FRACTIONAL	± 1/32	REFERENCE DIMENSIONS ARE SHOWN WITH REF. NOTE
OTHER:	X.X	± 0.015	
	X.XX	± 0.010	
	X.XXX	± 0.005	
	ANGULAR	± 1.0	PROJECT No.
FILENAME:	FOLDER:		