

PRICE GROUP	DESCRIPTION	DISCOUNT MULTIPLIER
05	PVC INSERT FITTINGS	



PRODUCTS | PRICE LIST

PVC INSERT PRESSURE FITTINGS

LINS | EFFECTIVE OCTOBER 1, 2018

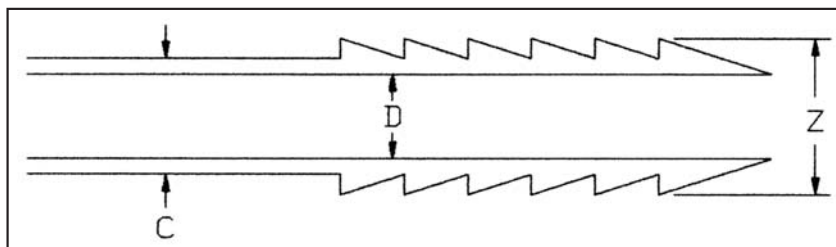
RECOMMENDED INSTALLATION PROCEDURES

INSERT (BARBED) CONNECTIONS:

Sizes $\frac{1}{2}$, $\frac{3}{4}$ and 1 inch - one clamp directly over barbs.

Sizes 1 $\frac{1}{4}$ inch and greater - one clamp directly over barbs plus one additional clamp.

INSERT DIAMETER DIMENSIONS



MAXIMUM DIAMETERS

Size	C MAX	D MIN	Z MAX
$\frac{1}{2}$	0.635	0.406	0.665
$\frac{3}{4}$	0.835	0.562	0.865
1	1.055	0.750	1.095
1 $\frac{1}{4}$	1.375	0.995	1.425
1 $\frac{1}{2}$	1.605	1.125	1.665
2	2.065	1.656	2.125
2 $\frac{1}{2}$	2.460	2.062	2.520
3	3.065	2.600	3.125
4	4.030	3.525	4.090

PVC INSERT FITTINGS PRICE LIST

TEES



Insert

TEE				
Part No	Size (in)	Ctn Qty	Code	List Price
1401-005	1/2	50	05	2.46
1401-007	3/4	50	05	2.67
1401-010	1	25	05	3.48
1401-012	1 1/4	10	05	5.41
1401-015	1 1/2	10	05	6.14
1401-020	2	10	05	12.13
1401-030	3	5	05	43.65



Insert x Insert x Reducing Insert

REDUCING TEE				
Part No	Size (in)	Ctn Qty	Code	List Price
1401-101	3/4 x 3/4 x 1/2	25	05	3.02
1401-130	1 x 1 x 1/2	25	05	3.53
1401-131	1 x 1 x 3/4	25	05	3.56
1401-166	1 1/4 x 1 1/4 x 1/2	25	05	4.64
1401-167	1 1/4 x 1 1/4 x 3/4	25	05	4.64
1401-168	1 1/4 x 1 1/4 x 1	25	05	4.64
1401-209	1 1/2 x 1 1/2 x 1/2	10	05	8.09
1401-210	1 1/2 x 1 1/2 x 3/4	10	05	8.09
1401-211	1 1/2 x 1 1/2 x 1	10	05	8.09
1401-212	1 1/2 x 1 1/2 x 1 1/4	10	05	8.09
1401-247	2 x 2 x 1/2	10	05	11.51
1401-248	2 x 2 x 3/4	10	05	11.51
1401-249	2 x 2 x 1	10	05	11.51
1401-250	2 x 2 x 1 1/4	10	05	12.05
1401-251	2 x 2 x 1 1/2	10	05	12.42



Insert x Reducing Insert x Reducing Insert

REDUCING TEE				
Part No	Size (in)	Ctn Qty	Code	List Price
1401-094	3/4 x 1/2 x 1/2	25	05	3.32
1401-125	1 x 3/4 x 3/4	25	05	5.75
1401-157	1 1/4 x 1 x 3/4	25	05	6.60
1401-158	1 1/4 x 1 x 1	25	05	6.60
1401-202	1 1/2 x 1 1/4 x 1	10	05	8.29
1401-203	1 1/2 x 1 1/4 x 1 1/4	10	05	8.29



Insert x Insert x Double Helix

TEE				
Part No	Size (in)	Ctn Qty	Code	List Price
1401-099	3/4	25	05	3.83
1401-129	1	25	05	4.18



Slip x Slip x Insert

TRANSITION TEE				
Part No	Size (in)	Ctn Qty	Code	List Price
1102-249	2 x 2 x 1	10	01	5.77*

*See Schedule 40 Price List; Discounts will vary.



Insert x Insert x Bullhead Insert

BULLHEAD TEE				
Part No	Size (in)	Ctn Qty	Code	List Price
1401-074	1/2 x 1/2 x 3/4	25	05	6.64
1401-102	3/4 x 3/4 x 1	25	05	7.65
1401-132	1 x 1 x 1 1/4	25	05	10.68



Insert x Insert x FPT

COMBINATION TEE				
Part No	Size (in)	Ctn Qty	Code	List Price
1402-005	1/2	50	05	2.67
1402-007	3/4	50	05	4.01
1402-010	1	25	05	4.72
1402-012	1 1/4	10	05	6.94
1402-015	1 1/2	10	05	12.05
1402-020	2	10	05	14.95



Insert x Insert x FPT

COMBINATION TEE				
Part No	Size (in)	Ctn Qty	Code	List Price
1402-101	3/4 x 3/4 x 1/2	25	05	3.32
1402-130	1 x 1 x 1/2	25	05	4.37
1402-131	1 x 1 x 3/4	25	05	4.37
1402-166	1 1/4 x 1 1/4 x 1/2	25	05	5.94
1402-167	1 1/4 x 1 1/4 x 3/4	25	05	6.57
1402-168	1 1/4 x 1 1/4 x 1	25	05	6.94
1402-209	1 1/2 x 1 1/2 x 1/2	10	05	9.15
1402-210	1 1/2 x 1 1/2 x 3/4	10	05	10.86
1402-211	1 1/2 x 1 1/2 x 1	10	05	10.86
1402-212	1 1/2 x 1 1/2 x 1 1/4	10	05	11.12
1402-247	2 x 2 x 1/2	10	05	12.26
1402-248	2 x 2 x 3/4	10	05	12.98
1402-249	2 x 2 x 1	10	05	14.28
1402-251	2 x 2 x 1 1/2	10	05	14.95



Insert x Reducing Insert x Reducing FPT

COMBINATION TEE				
Part No	Size (in)	Ctn Qty	Code	List Price
1402-094	3/4 x 1/2	25	05	4.36
1402-124	1 x 3/4 x 1/2	25	05	5.44
1402-125	1 x 3/4 x 3/4	25	05	6.48
1402-156	1 1/4 x 1 x 1/2	25	05	8.03
1402-157	1 1/4 x 1 x 3/4	25	05	9.40



Insert x Insert x MPT

COMBINATION TEE				
Part No	Size (in)	Ctn Qty	Code	List Price
1403-005	1/2	50	05	3.40
1403-007	3/4	50	05	4.64
1403-010	1	25	05	5.94
1403-012	1 1/4	10	05	7.76
1403-015	1 1/2	10	05	8.66



Insert x Insert

90° ELBOW				
Part No	Size (in)	Ctn Qty	Code	List Price
1406-005	1/2	50	05	2.24
1406-007	3/4	50	05	2.75
1406-010	1	25	05	3.03
1406-012	1 1/4	10	05	3.40
1406-015	1 1/2	10	05	4.01
1406-020	2	10	05	5.61
1406-030	3	8	05	31.92



Insert x Reducing Insert

90° REDUCING ELBOW				
Part No	Size (in)	Ctn Qty	Code	List Price
1406-101	3/4 x 1/2	25	05	2.60
1406-131	1 x 3/4	25	05	3.19
1406-168	1 1/4 x 1	25	05	4.72
1406-212	1 1/2 x 1 1/4	10	05	5.61



Insert x FPT

90° COMBINATION ELBOW				
Part No	Size (in)	Ctn Qty	Code	List Price
1407-005	1/2	50	05	2.53
1407-007	3/4	50	05	2.75
1407-010	1	25	05	3.53
1407-012	1 1/4	10	05	5.23
1407-015	1 1/2	10	05	5.94
1407-020	2	10	05	10.07



Insert x FPT

90° Reducing Combination Elbow				
Part No	Size (in)	Ctn Qty	Code	List Price
1407-101	3/4 x 1/2	50	05	2.60
1407-130	1 x 1/2	25	05	2.75
1407-131	1 x 3/4	25	05	3.19
1407-166	1 1/4 x 1/2	25	05	4.72
1407-167	1 1/4 x 3/4	25	05	4.72
1407-168	1 1/4 x 1	25	05	4.72
1407-211	1 1/2 x 1	10	05	5.38
1407-212	1 1/2 x 1 1/4	10	05	5.84
1407-251	2 x 1 1/2	10	05	9.54



Insert x Slip

90° ELBOW				
Part No	Size (in)	Ctn Qty	Code	List Price
127-957	1 1/2	50	05	10.24



Insert x MPT

90° COMBINATION ELBOW				
Part No	Size (in)	Ctn Qty	Code	List Price
1413-005	1/2	50	05	2.82
1413-007	3/4	50	05	3.92
1413-010	1	25	05	5.13
1413-012	1 1/4	10	05	6.82
1413-015	1 1/2	10	05	9.06
1413-020	2	10	05	14.31



FIPT x Insert

SIDE OUTLET ELBOW				
Part No	Size (in)	Ctn Qty	Code	List Price
1414-101	3/4 x 3/4 x 1/2	50	05	6.48
1414-130	1 x 1 x 1/2	25	05	6.96
1414-131	1 x 1 x 3/4	25	05	6.96



Insert

SIDE OUTLET TEE				
Part No	Size (in)	Ctn Qty	Code	List Price
1416-007	3/4	50	05	8.36
1416-101	3/4 x 1/2	50	05	8.36
1416-130	1 x 1/2	50	05	8.88
1416-131	1 x 3/4	50	05	8.88

CROSS



Insert

CROSS				
Part No	Size (in)	Ctn Qty	Code	List Price
1420-007	3/4	25	05	6.44
1420-010	1	25	05	8.00

PVC INSERT FITTINGS PRICE LIST

COUPLINGS, ADAPTERS



Insert x Insert

COUPLING					
Part No	Size (in)	Ctn Qty	Code	List Price	
1429-005	1/2	50	05	1.15	
1429-007	3/4	50	05	1.38	
1429-010	1	50	05	1.45	
1429-012	1 1/4	25	05	2.13	
1429-015	1 1/2	25	05	2.52	
1429-020	2	10	05	4.81	
1429-030	3	10	05	20.97	
1429-040	4	10	05	28.54	



Insert x Reducing Insert

REDUCING COUPLING					
Part No	Size (in)	Ctn Qty	Code	List Price	
1429-101	3/4 x 1/2	50	05	1.86	
1429-130	1 x 1/2	50	05	2.54	
1429-131	1 x 3/4	50	05	1.93	
1429-167	1 1/4 x 3/4	25	05	3.93	
1429-168	1 1/4 x 1	25	05	3.03	
1429-210	1 1/2 x 3/4	25	05	4.81	
1429-211	1 1/2 x 1	25	05	4.59	
1429-212	1 1/2 x 1 1/4	25	05	3.56	
1429-249	2 x 1	10	05	6.48	
1429-250	2 x 1 1/4	10	05	6.03	
1429-251	2 x 1 1/2	10	05	5.74	



Insert x Double Helix

REDUCING COUPLING					
Part No	Size (in)	Ctn Qty	Code	List Price	
1429-099	3/4	50	05	2.48	
1429-129	1	50	05	2.65	

ADAPTERS



Insert x Spig/Slip

FITTING ADAPTER					
Part No	Size (in)	Ctn Qty	Code	List Price	
1432-010	1 x 1 Spigot (3/4 Slip)	50	05	3.23	
1432-131	3/4 x 1 Spigot (3/4 Slip)	50	05	3.23	



Insert x FPT

FEMALE ADAPTER					
Part No	Size (in)	Ctn Qty	Code	List Price	
1435-005	1/2	50	05	5.03	
1435-007	3/4	50	05	5.44	
1435-101	1/2 x 3/4	50	05	6.45	
1435-010	1	50	05	6.03	
1435-012	1 1/4	25	05	7.40	
1435-015	1 1/2	25	05	9.40	
1435-020	2	10	05	11.95	



Insert x MPT

MALE ADAPTER					
Part No	Size (in)	Ctn Qty	Code	List Price	
1436-005	1/2	50	05	1.14	
1436-007	3/4	50	05	1.38	
1436-010	1	50	05	1.43	
1436-012	1 1/4	20	05	2.26	
1436-015	1 1/2	25	05	2.52	
1436-020	2	10	05	4.84	
1436-030	3	10	05	22.87	
1436-040	4	10	05	31.79	



Reducing MPT x Insert

REDUCING MALE ADAPTER					
Part No	Size (in)	Ctn Qty	Code	List Price	
1436-074	1/2 x 3/4	50	05	3.56	
1436-075	1 x 1/2	50	05	3.71	
1436-102	3/4 x 1	50	05	3.71	
1436-132	1 x 1 1/4	25	05	4.48	
1436-133	1 1/2 x 1	25	05	6.77	
1436-169	1 1/4 x 1 1/2	10	05	6.77	
1436-213	1 1/2 x 2	10	05	8.69	



MPT x Reducing Insert

REDUCING MALE ADAPTER					
Part No	Size (in)	Ctn Qty	Code	List Price	
1436-101	3/4 x 1/2	50	05	3.22	
1436-131	1 x 3/4	50	05	3.32	
1436-167	1 1/4 x 3/4	25	05	3.93	
1436-168	1 1/4 x 1	25	05	4.21	
1436-211	1 1/2 x 1	25	05	5.13	
1436-212	1 1/2 x 1 1/4	25	05	5.13	
1436-251	2 x 1 1/2	10	05	8.63	



MPT x 2" length SP

POOL ADAPTER					
Part No	Size (in)	Ctn Qty	Code	List Price	
1436-170	1 1/4	25	05	6.07	
1436-205	1 1/2 x 1 1/4 x 2	25	05	6.99	



Insert x SP

INSERT ADAPTER (WHITE PVC)					
Part No	Size (in)	Ctn Qty	Code	List Price	
460-007	3/4 x 3/4 SP (1/2 Slip)	50	01	*	
460-010	1 x 1 SP (3/4 Slip)	50	01	*	
460-015	1 1/2 x 1 1/2 SP	25	01	*	

*See Schedule 40 Price List; Discounts will vary.



Slip x Insert PVC pipe to Flexible pipe

ADAPTER (WHITE PVC)					
Part No	Size (in)	Ctn Qty	Code	List Price	
474-007	3/4	50	01	*	
474-010	1	50	01	*	
474-015	1 1/2	25	01	*	

*See Schedule 40 Price List; Discounts will vary.



Insert

INSERT PLUG				
Part No	Size (in)	Ctn Qty	Code	List Price
1449-005	1/2	100	05	2.04
1449-007	3/4	100	05	2.13
1449-010	1	50	05	2.86
1449-012	1 1/4	25	05	3.63
1449-015	1 1/2	25	05	3.97
1449-020	2	10	05	6.99

RISER EXTENDER



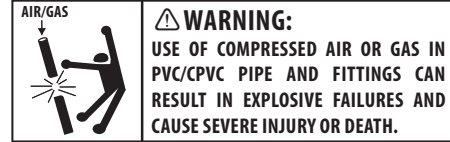
MPT x FPT

RISER EXTENDER (WHITE PVC)				
Part No	Size (in)	Ctn Qty	Code	List Price
434-005	1/2 x 2 ¹ / ₁₆ lg	50	01	*
434-007	3/4 x 1 ⁵ / ₈ lg	50	01	*
434-008	3/4 x 2 ¹⁵ / ₁₆ lg	50	01	*
434-020	2 x 2 ¹¹ / ₁₆ lg	25	01	*
439-005	1/2 x 1 ³ / ₈ lg	50	01	*

*See Schedule 40 Price List; Discounts will vary.

PVC INSERT FITTINGS PRICE LIST

DO NOT USE LASCO FITTINGS FOR COMPRESSED AIR OR GASES.
DO NOT TEST PVC PIPING SYSTEMS WITH COMPRESSED AIR OR GASES.
DO NOT USE FITTINGS WITH LIQUIDS NOT RECOMMENDED BY LASCO.
MODIFICATIONS OF FITTINGS VOIDS THE WARRANTY.



STANDARDS AND SPECIFICATIONS – PVC INSERTS

- ASTM D-2609 – Plastic Insert Fittings for Polyethylene (PE) Plastic Pipe.
- ASTM D-1784 – Rigid Poly (Vinyl Chloride) (PVC) Compounds and Chlorinated Poly (Vinyl Chloride) (CPVC) Compounds.
- ASTM F-1970 – Standard Specification for Special Engineered Fittings, Appurtenances or Valves for use in Poly (Vinyl Chloride) (PVC) or Chlorinated Poly (Vinyl Chloride) (CPVC) Systems.
- MATERIAL – LASCO Schedule 40 Fittings are produced from PVC TYPE 1, CELL Classification 12454-B.
- LISTINGS – NSF (National Sanitation Foundation) for potable water services.



CUSTOMER SERVICE

Phone: (315) 451-1100 or (800) 776-2266 | Fax: (800) 729-3299
7652 Morgan Road • Liverpool, New York 13090