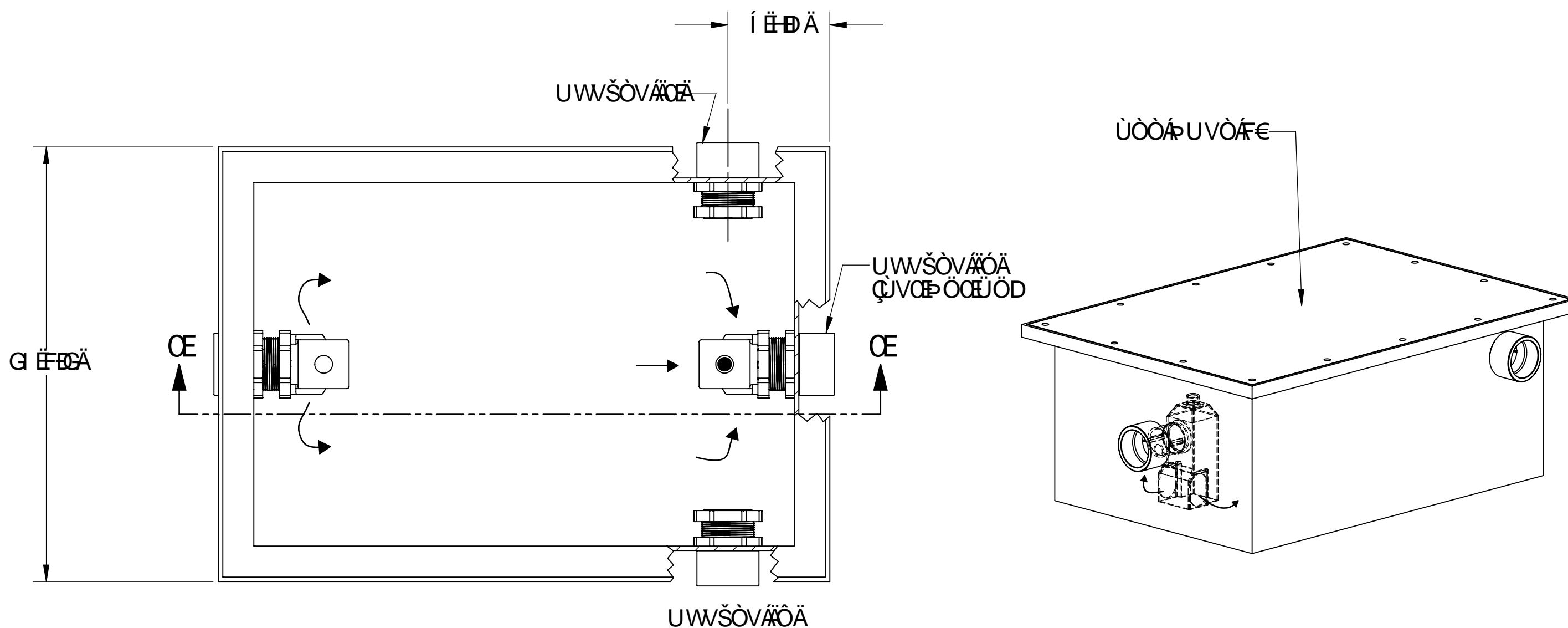


[illegible][illegible][illegible]

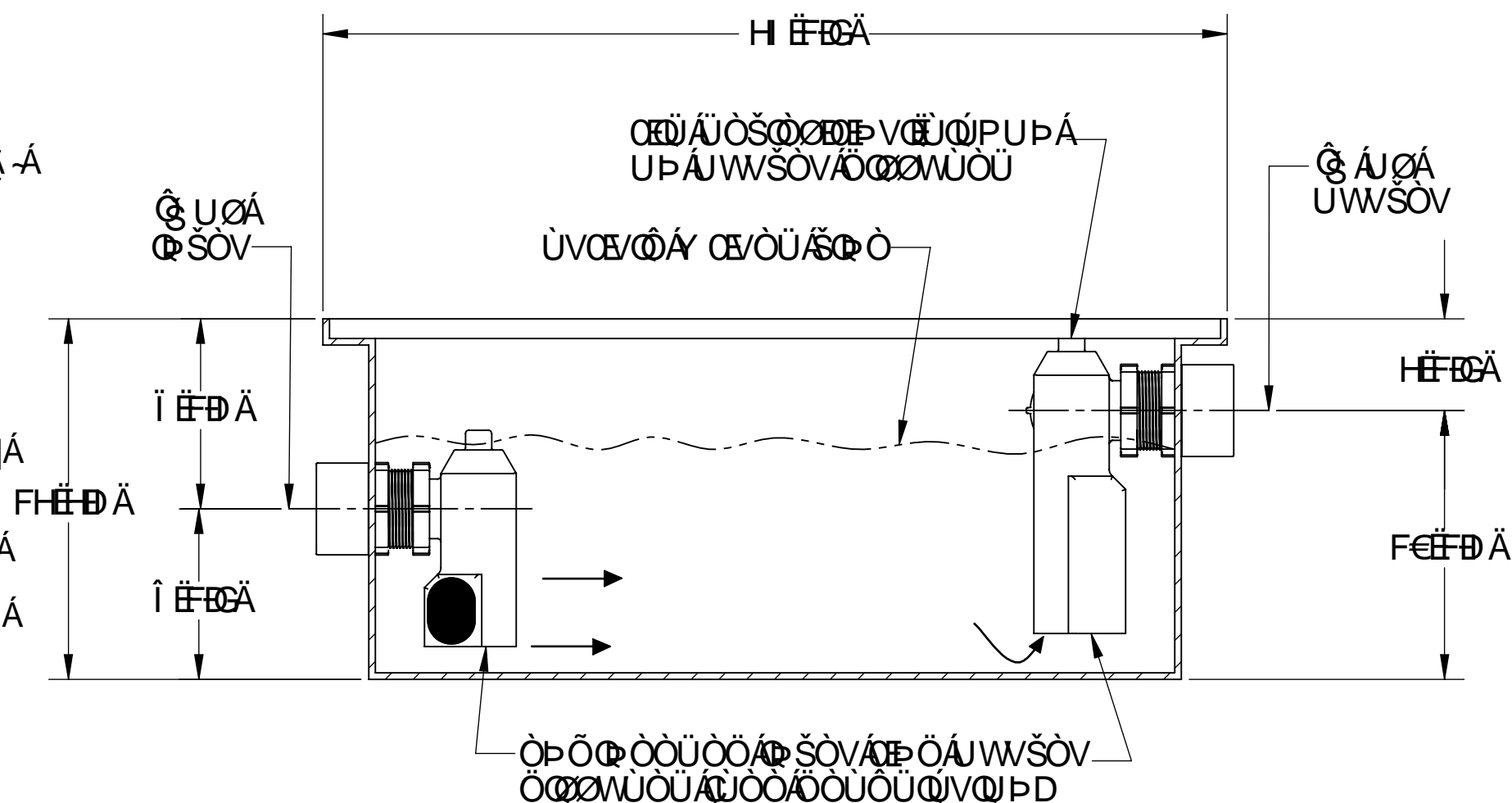
The diagram shows five circular icons arranged horizontally, each representing a different type of wastewater treatment component. Below each icon is its name in lowercase letters.

- grease interceptors**: An icon showing a circular tank with a smaller circle inside, representing a grease trap.
- oil separators**: An icon showing a rectangular tank with a smaller rectangle inside, representing an oil separator.
- solids interceptors**: An icon showing a circular tank with a smaller circle inside, representing a solids interceptor.
- chemical waste tanks**: An icon showing a circular tank with a smaller circle inside, representing a chemical waste tank.
- process systems**: An icon showing a circular tank with a smaller circle inside, representing a process system.

VP0AP0U0T0B0P00P0V0C0P00AP0Q0U0C0P00AP0P0AU0S0A0UU0U0U0V0Y0A0G7<9F'DFC8I7HG0P0Y0A0
U0UU0U0W0N0V0P0A0C0U0C0U0U0U0U0C0Y0P0U0S0A0Y0P0U0W0A0P0A0U0Q0V0P0A0U0T0U0Q0P0A0U0G7<9F'DFC8I7HG0Q0A0
U0U0P0Q0V0O0E0



VUÚÁXÒY
Y ĐÁU XÒÜD



Ò Þ Ö Á Ø Ò Ò

[illegible]

A 5 H@ D9



SCHIER
PRODUCTS
Pioneering Drain Line Purity