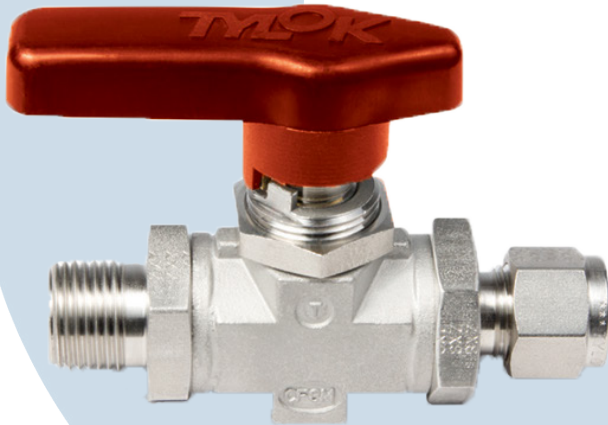
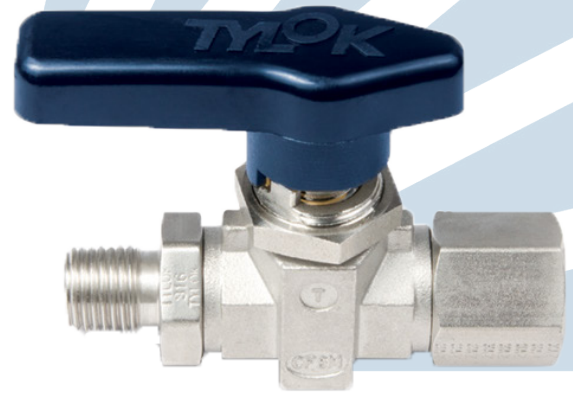


# High Pressure Ball Valves

Ball Valves



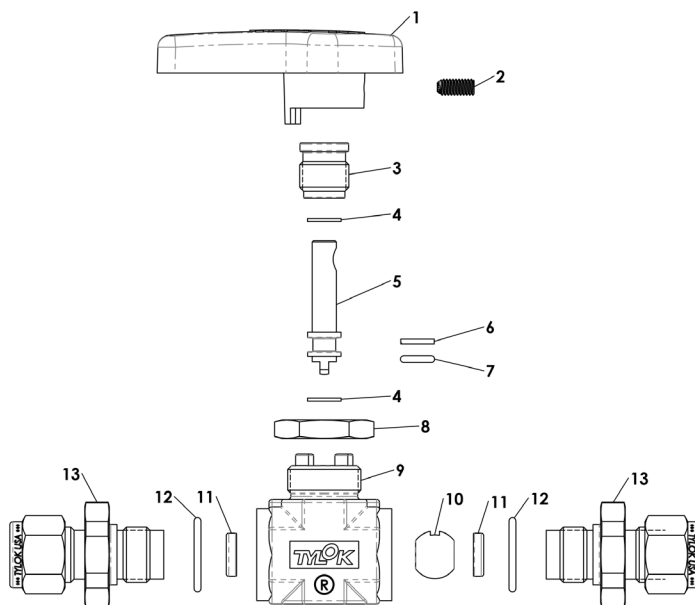
## Valve Options

- Reliable, simple, operation for on-off service.
- Fast acting, one quarter turn fully opens or closes the valve.
- Maximum performance, straight through flow for minimum turbulence and pressure drop.
- Positive leak tight shut off, even with fluctuating pressures.
- Panel mounting capabilities standard
- Bi-Directional Flow.
- Handle direction indicates position of valve and flow direction.
- Micro finished ball provides positive seal.
- Free floating ball design compensates for seat wear.
- Available in CBC-Lok®, CS-Lok®, or Tylok Standard Tube Fittings and NPT pipe end connections.

Specifications	Stainless Steel	
	TFE	KEL-F
Pressure Rating	1500 psig (103 bar)	5000 psig (344 bar)
Temperature Rating	-15 to 400 °F (-26 to 204 °C)	-15 to 300 °F (-26 to 149 °C)

\* For tubing and pipe working pressures see CBC-Lok® / CS-Lok® section.

#	Components	Stainless Steel	Brass
1	Handle	Nylon with Brass Insert	
2	Screw	Stainless Steel	
3	Gland Nut	316 SS	Brass
4	Stem Washer	Nylat	
5	Stem	316 Stainless Steel	
6	Stem Back-up Ring	TFE	
7	Stem O-Ring	Fluorocarbon FKM	
8	Panel Lock Nut	316 SS	Brass
9	Body	316 SS	Brass
10	Ball	316 Stainless Steel	
11	Seat	TFE, KEL-F	
12	End Connector O-Ring	Fluorocarbon FKM	
13	End Connector	316 SS	Brass



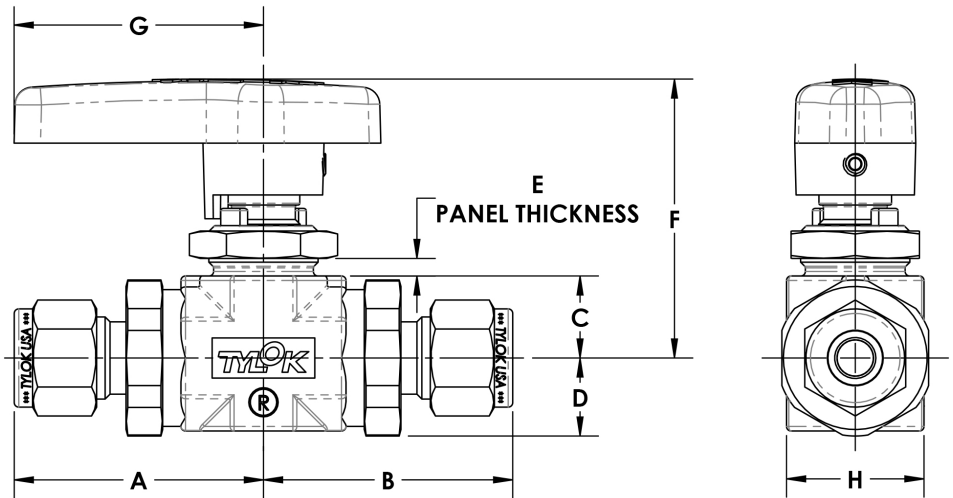
# High Pressure Ball Valves

## Part Number Shown:

**SS-6-DTT-6-6-K**

CBC-Lok® double ferrule tube ends are completely interchangeable with Swagelok® & Parker A-Lok® tube ends.

CS-Lok® single ferrule tube ends are completely interchangeable with Parker CPI® tube ends.



## Valve Dimension Chart

	Part Number	Connection		Orifice	Dimensions (Inches)											
		Port A	Port B	Inch (mm)	A	B	C	D	E	F	G	H	Panel Hole	Panel Nut Hex		
SERIES 4	4-DTT-2-2*	1/8" CBC-Lok®		0.188 (4.8)	1.54	1.54	0.56	0.47	1/8	1.89	1.70	0.88	0.75	7/8		
	4-STT-2-2*	1/8" CS-Lok®														
	4-DTT-4-4	1/4" CBC-Lok®			1.63	1.63										
	4-STT-4-4	1/4" CS-Lok®														
	4-1FF-2-2	1/8" Female NPT			1.21	1.21										
	4-1FF-4-4	1/4" Female NPT			1.46	1.46										
	4-1MM-2-2	1/8" Male NPT			1.30	1.30										
	4-1MM-4-4	1/4" Male NPT			1.49	1.49										
SERIES 6	6-DTT-4-4*	1/4" CBC-Lok®		0.250 (6.4)	1.65	1.65	0.56	0.54	5/32	1.91	1.70	0.94	0.75	7/8		
	6-STT-4-4*	1/4" CS-Lok®														
	6-DTT-6-6	3/8" CBC-Lok®		0.250 (6.4)	1.71	1.71										
	6-STT-6-6	3/8" CS-Lok®														
	6-DTT-8-8	1/2" CBC-Lok®			1.83	1.83										
	6-STT-8-8	1/2" CS-Lok®														
	6-1FF-4-4	1/4" Female NPT			1.51	1.51										
	6-1FF-6-6	3/8" Female NPT			1.70	1.70										
	6-1FF-8-8	1/2" Female NPT														
	6-1MM-4-4	1/4" Male NPT			1.51	1.51										
	6-1MM-6-6	3/8" Male NPT			1.70	1.70										
	6-1MM-8-8	1/2" Male NPT														
SERIES 8	8-DTT-6-6*	3/8" CBC-Lok®		0.375 (9.5)	1.85	1.85	0.81	0.65	5/32	2.29	1.96	1.13	0.88	1-1/16		
	8-STT-6-6*	3/8" CS-Lok®														
	8-DTT-8-8	1/2" CBC-Lok®			1.96	1.96										
	8-STT-8-8	1/2" CS-Lok®			1.97	1.97										
	8-DTT-12-12	3/4" CBC-Lok®			1.61	1.61										
	8-STT-12-12	3/4" CS-Lok®			1.78	1.78										
	8-1FF-6-6	3/8" Female NPT			1.90	1.90									0.72	
	8-1FF-8-8	1/2" Female NPT			1.65	1.65									0.65	
	8-1FF-12-12	3/4" Female NPT			1.84	1.84										
	8-1MM-6-6	3/8" Male NPT														
8-1MM-8-8	1/2" Female NPT															

\* Reduced Port





