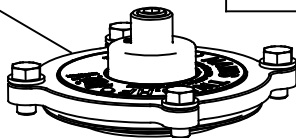
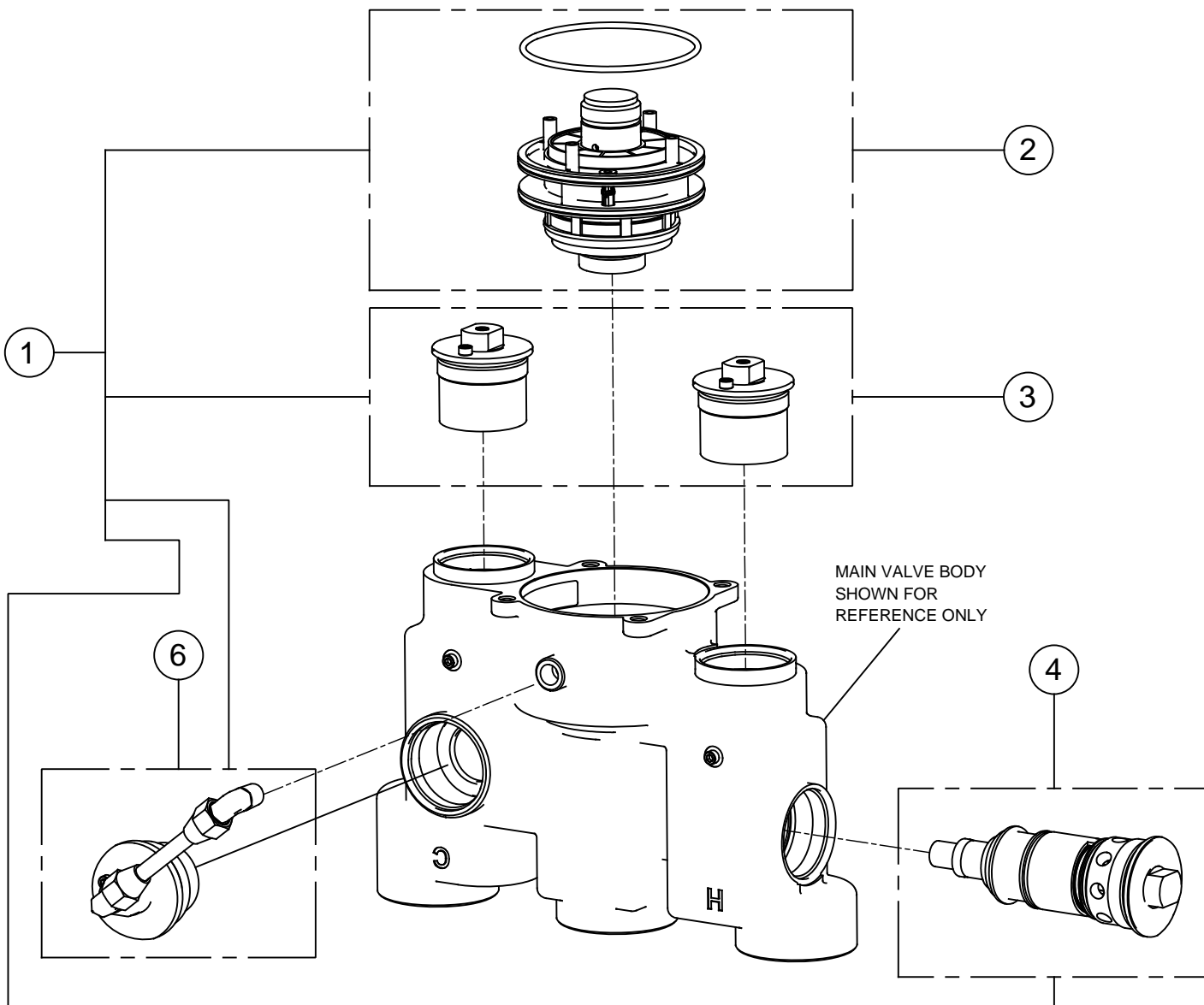


| ITEM | DESCRIPTION                                | PART NO. |
|------|--|----------|
| 1    | KIT, REPAIR, TWBS.HF, COMPLETE             | VRKHF.A  |
| 2    | KIT, REPAIR, TWBS.HF, MAIN MIXING CHAMBER  | VRKHF.B  |
| 3    | KIT, REPAIR, TWBS.HF, CHECK STOPS          | VRKHF.C  |
| 4    | KIT, REPAIR, TWBS.HF, HOT SHUT OFF VALVE   | VRKHF.D  |
| 5    | KIT, BASIC MAINT, TWBS.HF, T-STATS+O-RINGS | VRKHF.E  |
| 6    | KIT, REPAIR, TWBS.HF COLD BYPASS VALVE     | VRKHF.F  |

VALVE COVER AND COVER BOLTS SHOWN FOR REFERENCE ONLY



EACH KIT INCLUDES INSTALLATION INSTRUCTIONS



MAIN VALVE BODY SHOWN FOR REFERENCE ONLY

**BASIC MAINTENANCE KIT**  
(NOT SHOWN) INCLUDES ONLY ALL O-RINGS AND THE THERMOSTATS USED IN THE MODEL TWBS.HF VALVE.

# PARTS BREAKDOWN

WHEN ORDERING PARTS PLEASE SPECIFY MODEL NUMBER.

|            |  |   |   |
|------------|--|---|---|
|            |  | 1455 KLEPPE LANE<br>SPARKS, NEVADA 89431<br>(775) 359-4712 FAX (775) 359-7424<br>E-MAIL: HAWS@HAWS.CO.COM<br>WEBSITE: WWW.HAWS.CO.COM |   |
|            |  | ECN NO. 5430<br>REVISION 08/20/19<br>DRAWN DP<br>APPROVED DP  | REVISED PER DP<br>DATE 08/20/19<br>CHECKED FV |
| SCALE: 1:1 |  | DRAWING TYPE: PARTS BREAKDOWN   | SIZE: A SHEET 1 OF 1                          |