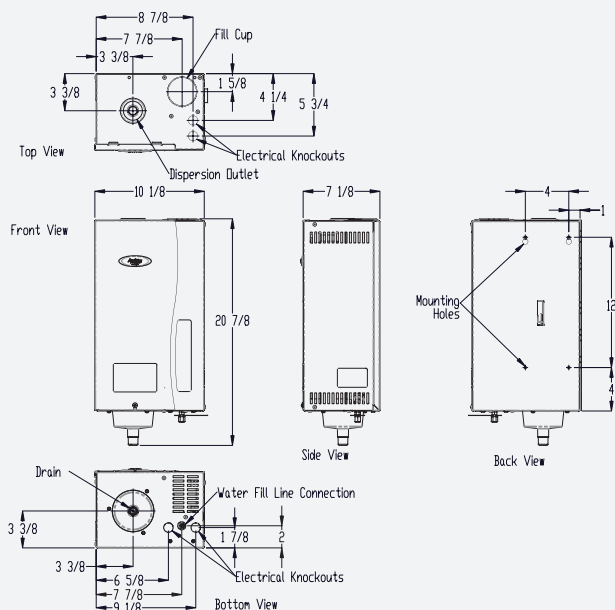


STEAM CAPACITY Gallon/Day	VOLTAGE	CURRENT DRAW	
		Amps	Kw
11.5	120V	11.5	1.4
16.0		16.0	1.9
20.5	208V	11.5	2.4
30.0		16.0	3.3
23.3	240V	11.5	2.8
34.6		16.0	3.8

MODEL SELECTION BASED ON WATER CONDUCTIVITY

Conductivity	Hardness	Water Characteristic	Recommended Model Installed at 208/240 VAC
75-100	0-3	Naturally Soft	Model 800LC
100-300	3-9	Naturally Soft	Model 800LC
300-500	9-15	Slightly Hard	Model 800
500-650	15-20	Moderately Hard	Model 800
650-850	20-25	Hard	Model 800
850-1250	25-36	Very Hard	Model 800
Above 1250	Above 36	Extremely Hard	Installation Not Recommended

- The Model 800LC will not work with water that has been artificially softened with a water softener.
- The Model 800LC is recommended for any installation regardless of water quality when installed at 120 VAC.
- Do not use demineralized or reverse osmosis water.



► PRINCIPLE OF OPERATION

The Aprilaire steam humidifier delivers humidity to a home's conditioned space through the use of the HVAC system ductwork. The humidifier operates utilizing electrode technology: current flowing between two electrodes in the disposable steam canister boil water to generate steam. Drain and fill valves in the humidifier work together to maintain the correct water level in the canister to satisfy the demand for humidity based on the electrical conductivity of the water.

▶ PRINCIPLE OF OPERATION

- + **High Capacity** - One unit provides between 11.5 and 34.6 gallons per day of moisture to the air.
- + **Internal Control Board** - Manages the operation of the humidifier to provide full capacity at 11.5 or 16 amps. Illuminates service light when canister needs to be replaced.
- + **Versatile Mounting Options** - Remote (Models 865 & 866 fan pack) and duct mounted options available.
- + **Superior Dispersion and Absorption** - “Dispersion tubelets” deliver the hottest, driest steam to the air, preventing condensation in the duct.
- + **Display Panel** - Illuminated LEDs show unit operation (fill, drain, steam) and diagnostics.
- + **Water Level Sensor** - Manages the water level in the steam canister to prevent overfilling.
- + **Back Flow Protection** - Air gap in fill cap prevents pressure build up.
- + **End-of-Season Drain** - After 72-hours without a humidity call, unit automatically drains and enters standby mode.
- + **Operating Time Monitor** - Accumulates actual humidifier run time to activate periodic drain and fill cycles and monitors the life of the of the canister.
- + **Control** - Model 62 Automatic Digital Humidifier Control with outdoor sensor included. Control automatically adjusts humidity set point based on outdoor temperatures and features blower activation to provide humidity without a call for heating.
- + **Drain Water Tempering** - Unit uses cold inlet water to temper canister drain water, protecting PVC piping and condensation pumps.
- + **Operating Weight** - Up to 27 pounds.
- + **Canister Replacement** - Once per humidifier season under normal conditions. Unit alerts when canister should be replaced; canister life will vary based on water quality.
- + **Electrical Data**- Unit operates at 120, 208 or 240 VAC and 11.5 or 16 amps.



Model 8620/8620W with IAQ Control

- Universal 2H/2C or 4H/2C HP
- Event-Based™ Air Cleaning
- Humidity or Ventilation
- Wi-Fi touch screen (8620W)



Model 8910/8910W with IAQ Control

- Universal 3H/3C or 4H/2C HP
- Event-Based™ Air Cleaning
- Humidity and Ventilation
- 2 Part - 3-Wire design
- Wi-Fi touch screen (8910W)



Model 8920W with IAQ Control

- Universal 3H/3C or 4H/2C HP
- Event-Based™ Air Cleaning
- Humidity and Ventilation
- 2 Part - 3-Wire design
- Full color Wi-Fi touch screen



Model 62 Automatic Digital Humidifier Control

- Large backlit display
- Continuous 24/7 RH monitoring
- Automatic control with outdoor sensor
- Built-in blower activation
- Status lights

Electrical

Input voltage and current

Voltage: 24 VAC +/-20%
Current: 80mA (nominal)

Output

Dry contact, normally open

Control

Control range

15% - 45% RH

Accuracy

+/-3% RH

Differential

3% RH

Outdoor temperature limit

60°F



AprilairePartners.com

Form No. 251 • 273062 3.17

©2017 Aprilaire - Division of Research Products Corporation

APRILAIRE RESERVES THE RIGHT TO CHANGE SPECIFICATIONS WITHOUT NOTICE.

P.O. Box 1467

Madison, WI 53701-1467

800.334.6011 F: 608.257.4357

Aprilaire®

Trusted Solutions for a Healthy Home™