

GALVANIZED STEEL SADDLE CLAMP

» 523 SERIES

SaddleUp™

SPECIFICATION

Sioux Chief 523 Series SaddleUp™ DWV saddle clamp shall be used in conjunction with stainless steel worm gear band where necessary for fastening piping or other conduit. Saddle clamp may be used with the PowerBar™ adjustable bracket or PowerBar™ Mini Strut, or may be fastened directly to building member. Clamp can also be suspended using 3/8" threaded rod to support pipe or thermal expansion tanks when a stainless band penetrates through both sides of the saddle clamp. Clamp shall be galvanized for corrosion resistance.

INSTALLATION

When used with the PowerBar brackets, thread the SaddleUp onto the bracket. Fasten or secure the bracket as needed. Slide clamp to desired location along bracket, and insert stainless steel band through slots in clamp. Wrap band around pipe or conduit, insert tab into worm-gear mechanism and tighten as usual.

When mounted to wall or building member, fasten the clamp to a wall or other building member with two screws (not provided). Be sure the screws used are long enough to secure the intended load. Insert stainless steel band through slots in clamp. Wrap band around pipe or conduit, insert tab into wormgear mechanism and tighten as usual.

MATERIALS

16-gauge galvanized steel

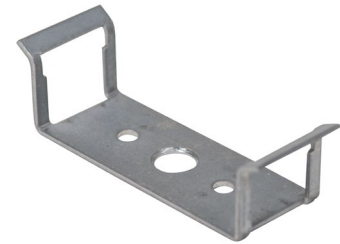
MAXIMUM LOAD RATING

Suspended from 3/8" ATR: 112-lbs.

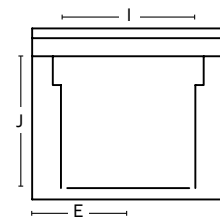
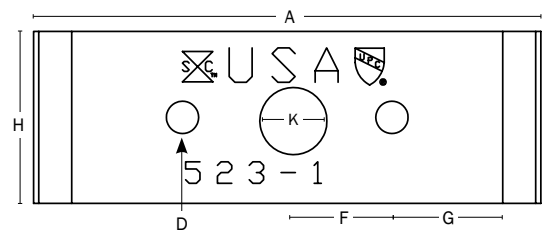
DIMENSIONS

A: Overall length	2.95" min.
B: Overall height	0.875"
C: Base length	2.625"
D: Mounting hole diameter	0.188"
E: Side to hole center	0.5"
F: Mounting hole spacing	0.609" on center
G: End to hole center	0.704"
H: Overall width	1"
I: Slot width	0.700"
J: Slot height	0.687"
K: Center hole diameter	0.400"

ITEM # SUBMITTED	_____
JOB NAME	_____
LOCATION	_____
ENGINEER	_____
CONTRACTOR	_____
PO#	_____ TAG _____



523-1



Create Item Number

523-1A

e.g. **523-1B:** Saddle Clamp with 5" stainless steel snap-lock band

BAND SIZE A

– = Saddle Clamp Only

B = 5" stainless steel snap-lock worm gear band

C = 4" stainless steel snap-lock worm gear band

D = 3" stainless steel snap-lock worm gear band