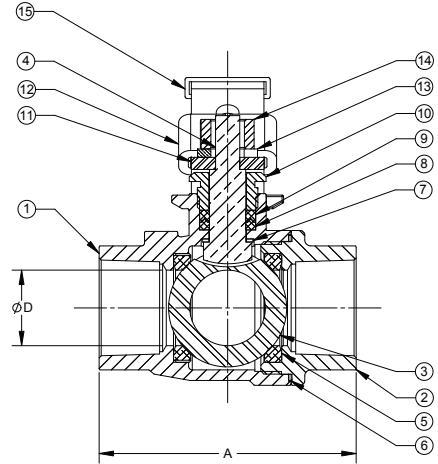


**Stainless Steel Ball Valve**  
**Full Port, Locking Lever Handle**  
**1000 WOG**  
**Blow-Out Proof Stem**  
**Specifications: MSS SP110**

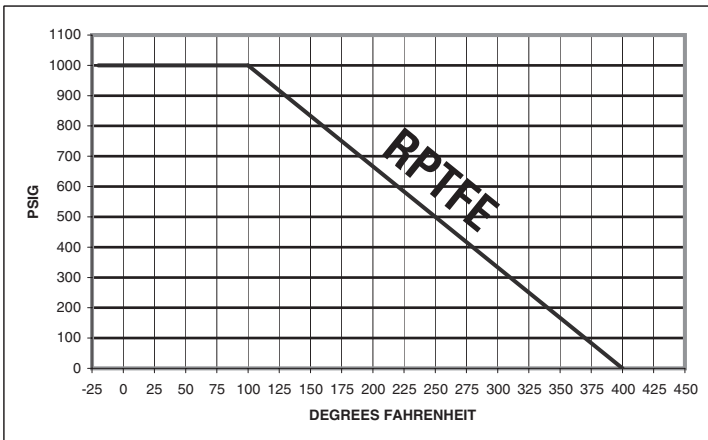
# BA260 Series 1/4"-3"

## Materials

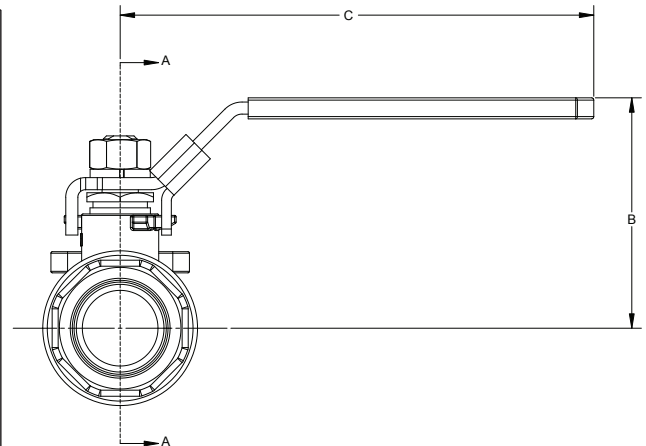
ITEM	QUANTITY	DESCRIPTION	MATERIAL
1	1	BODY	ASTM A351, GRADE CF8M
2	1	TAILPIECE	ASTM A351, GRADE CF8M
3	1	BALL	ASTM A351, GRADE CF8M
4	1	STEM	ASTM A276, TYPE 316
5	2	SEAT	RPTFE
6	1	BODY SEAL	PTFE
7	1	THRUST WASHER	PTFE
8	1	PACKING, MALE	PTFE
9	1	PACKING, FEMALE	PTFE
10	1	GLAND NUT	304 STAINLESS STEEL
11	1	HANDLE	304 STAINLESS STEEL
12	1	LOCKING DEVICE	304 STAINLESS STEEL
13	1	LOCKWASHER	304 STAINLESS STEEL
14	1	HANDLE NUT	ASTM A194, GRADE 8
15	1	HANDLE GRIP	VINYL



## Pressure Temperature Chart\*



\* 150 lb. SWP



## DIMENSIONS

	1/4"	3/8"	1/2"	3/4"	1"	1 1/4"	1 1/2"	2"	2 1/2"	3"
<b>A</b>	2.28	2.28	2.44	2.85	3.35	3.70	4.13	4.92	6.10	6.81
<b>B</b>	2.28	2.28	2.28	2.52	3.03	3.27	3.78	4.02	5.08	5.47
<b>C</b>	3.94	3.94	3.94	5.08	6.14	6.14	7.19	7.19	9.92	9.92
<b>D</b>	0.42	0.50	0.59	0.79	0.98	1.26	1.50	1.97	2.50	2.99

The information presented on this sheet is correct at time of publication. Milwaukee Valve reserves the right to change design and/or materials without notice. For our Installation, Operation and Maintenance Manual and the most current product information go to [www.milwaukeevalve.com](http://www.milwaukeevalve.com).  
 ⚠ State of California Prop 65 **WARNING: Cancer and Reproductive Harm.** For more information visit [www.p65warnings.ca.gov](http://www.p65warnings.ca.gov).

