

Features

- Katalyst® Spray Technology with air induction ball joint (patent pending).
- Single-function spray with 48 individual MasterClean™ spray nozzles.
- Three color options included for showerhead trim ring - white, green, or black.
- Requires a Rite-Temp® valve.
- Complements Toobi® Suite.
- 2.0 gal/min (7.6 l/min) maximum flow rate.

Material

- Metal construction.

Required Accessories

- K- 11748-K Pressure-Balancing Valve w/Diverter
- or
- K- 11748-KS Pressure-Balancing Valve w/Diverter
- or
- K- 2971-KS 3/4" Pressure-balancing Valve
- or
- K- 304-K Pressure-balancing Valve Less Stops
- or
- K- 304-KS Pressure-balancing Valve With Stops
- or
- K- 304-PS Pressure-balancing Valve With Stops
- or
- K- 304-PX Pressure-balancing Valve Less Steps
- or
- K- 304-US Pressure-balancing Valve With Stops
- or
- K- 304-UX Pressure-balancing Valve Less Stops

Recommended Accessories

- 1151968 Roughing-In Kit

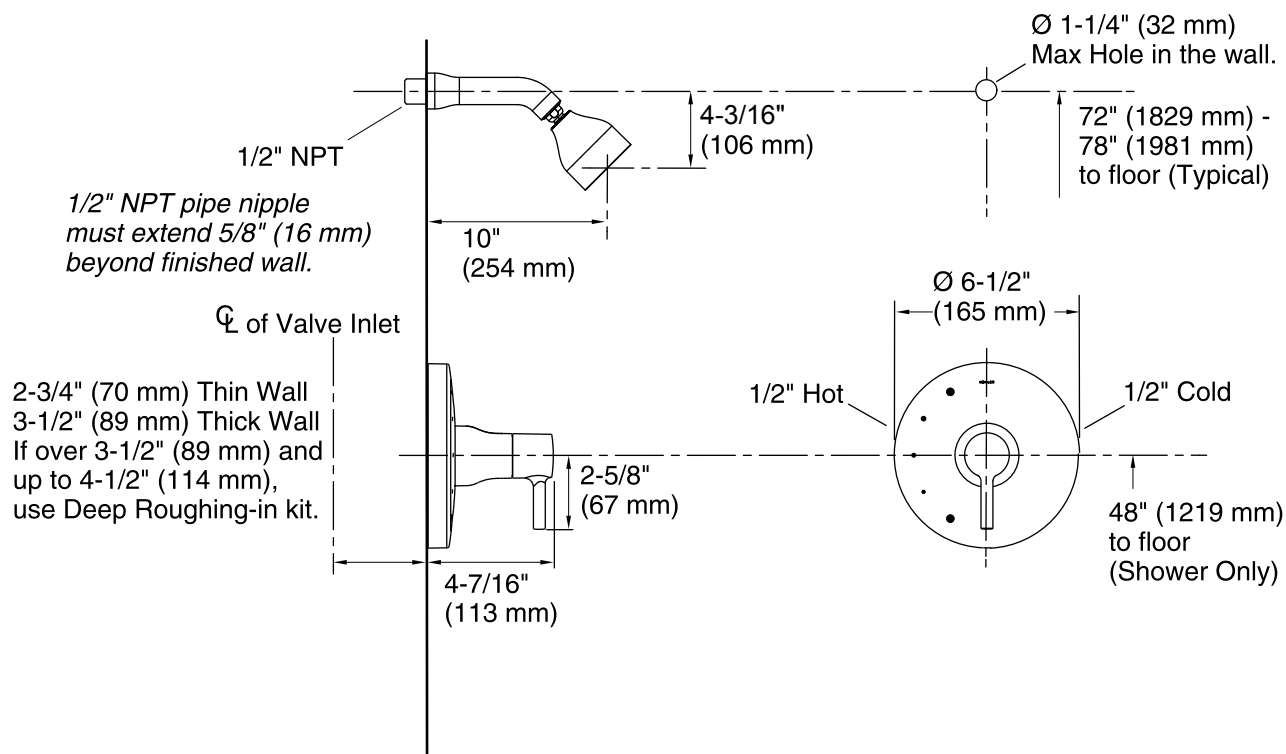


Codes/Standards

ASME A112.18.1/CSA B125.1
DOE - Energy Policy Act 1992
EPA WaterSense®

KOHLER® Faucet Lifetime Limited Warranty

See website for detailed warranty information.



Technical Information

All product dimensions are nominal.

Showerhead:

Rated maximum flow: 2 gal/min (7.6 l/min)

Pressure: 80 psi (5.5 bar)

Notes

For use with automatic compensating valves rated at 1.7 gal/min (6.4 l/min) or less.

Install this product according to the installation guide.

Install Rite-Temp valve according to valve installation guide.

NOTICE: Risk of product damage. Long screws, for installing trim, can damage the K-2971-KS valve. Consult the trim installation guide to verify if the thin wall installation kit (88526) is needed.

Avoid cross-flow conditions. Do not install shut-off device on either valve outlet.

Install straight pipe or tube drop of 7" (178 mm) to 18" (457 mm) with single elbow between valve and wall-mount spout.