

MBWI5030

Walk-In Tub

51.5" x 30.25" x 37.5"

GENERAL SPECIFICATIONS

Material - Acrylic

Installation - Alcove

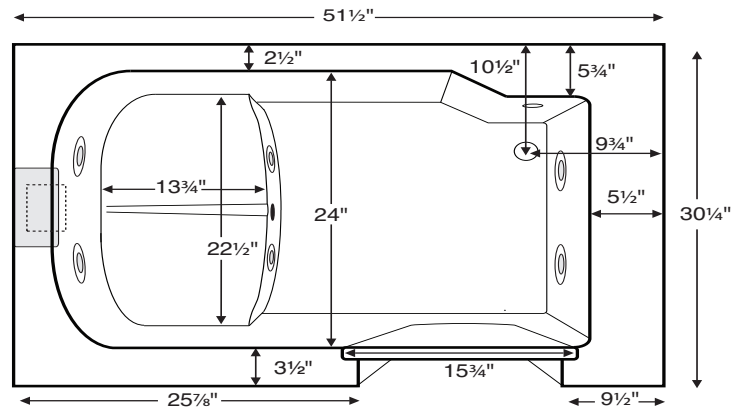
Not recommended as a tub / shower combination

Plumbed Weight - 190 lbs / 86 kg

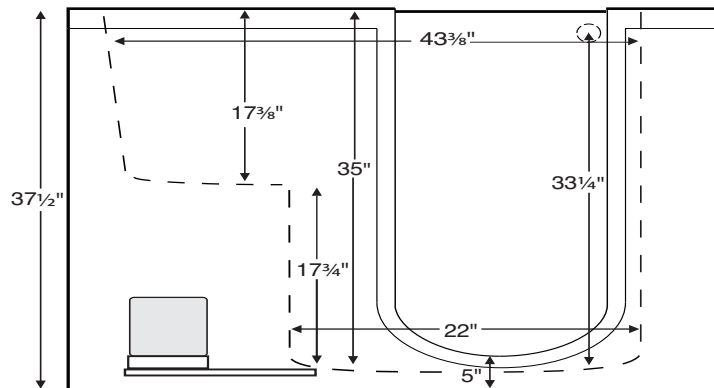
Soaker Weight - 165 lbs / 75 kg

Maximum Fill - 90 gal to overflow

NOTE: Filling this tub to the maximum may require an above average size or dedicated water heater.



Shown with Whirlpool Package and right-hand drain location.



IMPORTANT ORDERING & INSTALLATION INFORMATION:

- Before ordering or installing, please consider future access to all equipment.
- Removable panels on front skirt
- Quick-release drain kit in chrome finish included
- Comes without valve set. Combination packages with valves available. See next page for options.
- Grab bars come installed on tub
- Door gasket protected by limited lifetime warranty
- Suction and control locations may vary.
- Options listed cannot be combined with Designer Collection options.

• Options and accessories may be packaged inside the tub crate. Always check packaging before discarding.
 • All product measurements are +1/2".
 • Specifications and configurations are subject to change without notice.
 • Measurements herein supersede all others published prior to publication date below.

CSA # MTIS- WI5030

©2021 by MTI Baths, Inc. Modification Rights Reserved

See the Installation & Operation Manual for more details.
 MTI's Customer Service: Monday-Friday 8am-6pm EST
 800-783-8827 or service@mtibaths.com



Effective_03 01 2021

Hydrotherapy Package	Package Contents	Part #
Soaker Packages	soaking bath - no jets	MBSWI5030NV
	soaking bath - no jets; with valve package	MBSWI5030
	soaking bath - no jets; with Radiance® bath surface heating system	MBSWIR5030NV
	soaking bath - no jets; with valve package and Radiance® bath surface heating system	MBSWIR5030
Microbubbles Packages	1 microbubbles infusion port and pump	MBMWI5030NV
	1 microbubbles infusion port and pump; with valve package	MBMWI5030
	1 microbubbles infusion port and pump; with Radiance® bath surface heating system	MBMWIR5030NV
	1 microbubbles infusion port and pump; with valve package and Radiance® bath surface heating system	MBMWIR5030
Air Bath Packages	20 air jets, heated air blower	MBAWI5030NV
	20 air jets, heated air blower; with valve package	MBAWI5030
	20 air jets, heated air blower; with Radiance® bath surface heating system	MBAWIR5030NV
	20 air jets, heated air blower; with valve package and Radiance® bath surface heating system	MBAWIR5030
Whirlpool Packages	6 point-massage jets, 1-bhp pump	MBWWI5030NV
	6 point-massage jets, 1-bhp pump; with valve package	MBWWI5030
	6 point-massage jets, 1-bhp pump; with Radiance® bath surface heating system	MBWWIR5030NV
	6 point-massage jets, 1-bhp pump; with valve package and Radiance® bath surface heating system	MBWWIR5030
Microbubbles/ Air Bath Combo Packages	1 microbubbles infusion port and pump; 20 air jets, heated air blower	MBMAWI5030NV
	1 microbubbles infusion port and pump; 20 air jets, heated air blower; with valve package	MBMAWI5030
	1 microbubbles infusion port and pump; 20 air jets, heated air blower; with Radiance® bath surface heating system	MBMAWIR5030NV
	1 microbubbles infusion port and pump; 20 air jets, heated air blower; with valve package and Radiance® bath surface heating system	MBMAWIR5030
Whirlpool/ Air Bath Combo Packages	6 point-massage jets, 1-bhp pump, 20 air jets, heated air blower	MBCWI5030NV
	6 point-massage jets, 1-bhp pump; 20 air jets, heated air blower; with valve package	MBCWI5030
	6 point-massage jets, 1-bhp pump; 20 air jets, heated air blower; with Radiance® bath surface heating system	MBCWIR5030NV
	6 point-massage jets, 1-bhp pump; 20 air jets, heated air blower; with valve package and Radiance® bath surface heating system	MBCWIR5030

* **Valve Package** includes factory installed goose-neck spout in polished chrome with Premium Sigma® Roman tub hot and cold levers with contemporary design matching deck-mounted hand-held shower and diverter.

Quick Ship/Priority

Soaker or Whirlpool: Part # QSHIPMTIS

Airbath: Part # QSHIPMTISA

Inline Heater

For Whirlpool or Combo: Part # HTRMTIS

Heater with Recirculating Pump for

Soaker & Air Bath: Part # MBHTISOAK

Heater cannot not be combined with Microbubbles

End Panel (qty 1)

Part # SKAW25

10" Tub Extension Panel

Accommodates 60" openings.

Part # SKGIW

Tile Flange

Must specify tile flange location on order.

Factory Installed

1 sides: Part # MBTFK

2 sides: Part # MBTFK2

3 sides: Part # MBTFK3

Required Electrical Service - 110 Volt

Soaker- Inline Heater

1-15 amp

Microbubbles

1-15 amp

Whirlpool - Inline Heater

1-20 amp

Air Bath - Inline Heater

1-20 amp

Whirlpool - Inline Heater & Radiance

2-15 amp

Air Bath - Inline Heater & Radiance

2-15 amp

Air/MB Combo

2-15 amp

Air/WP Combo - Inline Heater

2-20 amp

Air/MB Combo - Radiance

2-20 amp

Air Bath or Whirlpool

Microbubbles Radiance

Air Bath or Whirlpool - Radiance

Soaker - Inline Heater & Radiance

Air/WP Combo

Air/WP Combo - Inline Heater & Radiance



ALL WALK-IN TUB STANDARD FEATURES

- Constructed of fiberglass / titanium / resin with a marine-grade high-gloss gelcoat finish.
- Steel structural frame with 6 leveling legs
- Front removable acrylic panels for equipment and valve plumbing access if necessary.
- Left-or right-hand drain location (must specify when ordering).
- Light-weight marine-grade door with easy-to-latch stainless steel hardware.
- 2 acrylic grab bars for security.
- Quick-release cable drain included in chrome finish.
- Textured bottom-compliant with ASTM C 1028-07 coefficient of friction test.
- 2 year residential warranty

WALK-IN TUB WITH OPTIONAL FACTORY-INSTALLED VALVE PACKAGE

- Factory installed goose-neck spout in polished chrome finish with matching Premium Sigma® Roman tub hot and cold levers and deck-mounted hand-held shower with diverter.

WALK-IN TUB MICROBUBBLES FEATURES

- a single, subtle infusion port that is color-matched to the tub.
- 1-hp whisper-quiet microbubbles pump.

WALK-IN TUB WHIRLPOOL FEATURES

- Six fully-adjustable point-massage jets.
- 1-bhp whisper-quiet pump with silent air volume control.

WALK-IN TUB AIR BATH FEATURES

- Twenty low-profile air jet distribution ports are installed around the perimeter of the bathing area with color matching caps. Each jet has an independent check valve preventing water and residue from entering the air lines.
- 3/4 bhp heated blower with automatic purge that dries the air jets 20 minutes after use.

WALK-IN TUB WITH OPTIONAL RADIANCE® SURFACE HEATING SYSTEM:

- Radiance® is a surface heating system designed to warm the interior surface of the tub (addition of Radiance® on a unit with whirlpool jets will require relocation of the jets on the backrest).
- Radiance utilizes electric heating grids for 2 zones: backrest area and seat of the tub. Grids are integrated in the tub structure.
- Low-voltage design. Uses energy equivalent to a standard light bulb.

• Options and accessories may be packaged inside the tub crate. Always check packaging before discarding.
• All product measurements are +1/2".
• Specifications and configurations are subject to change without notice.
• Measurements herein supersede all others published prior to publication date below.
CSA # MTIS- WI5030