



Designer Collection Tubs

Parisian® 1

MODEL #: 146

66" x 35.75" x 23"

GENERAL SPECIFICATIONS

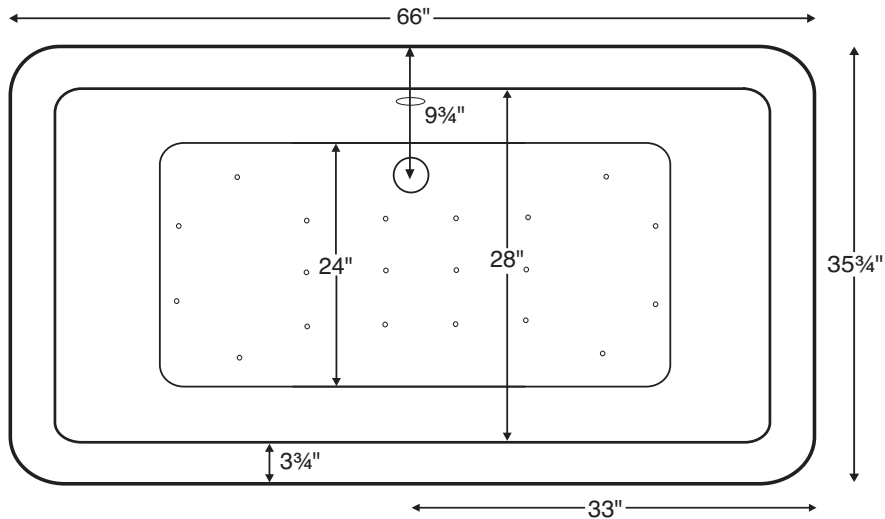
Material - Acrylic

Installation - Freestanding

Soaker Weight - 280 lbs / 127 kg

Maximum Fill - 87 gal to overflow

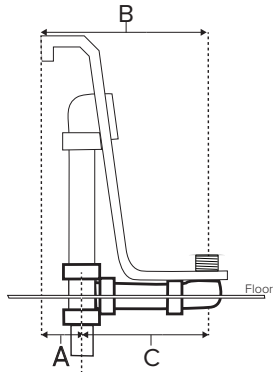
NOTE: Filling this tub to the maximum may require an above average size or dedicated water heater.



IMPORTANT:
Must have access to the drain from underneath the tub for installation and servicing.

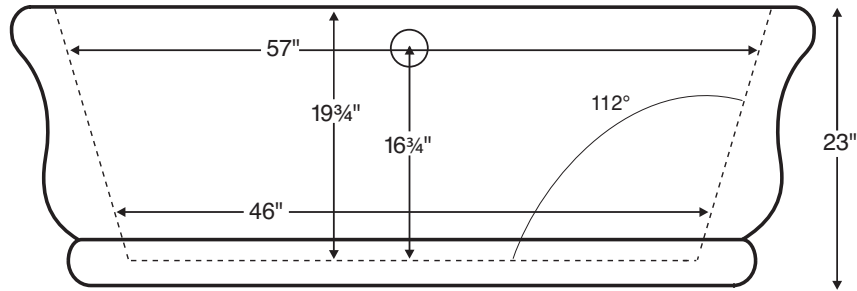
Drain Rough-In Measurements

A	B	C
4 3/4"	9 3/4"	5"



Requires use of a wall-mounted or freestanding tub filler.

Shown with Air Massage Package.



ELECTRICAL COMPONENTS & SPECIFICATIONS

Required Electrical Service - 110 Volt

Hydrotherapy Package	Components Included	GFCI
Air Massage	heated blower	1-15 amp
Air Massage Elite	heated blower, chromatherapy	1-15 amp

Electrical requirements may change with the addition of optional therapy components.
See specific option details or installation information.
CSA Certified C/US; ANSI Z124.1 and ANSI 112.19.7

See the Installation & Operation Manual for more details.
MTI's Customer Service: Monday-Friday 8am-6pm EST
800-783-8827 or service@mtibaths.com

- Before discarding tub crate, check for accessories that may be packaged inside.
- All product measurements are $\pm 1/2"$.
- Specifications and configurations are subject to change without notice.
- Measurements herein supersede all others published prior to publication date below.

IMPORTANT ORDERING & INSTALLATION INFORMATION:

- Before ordering or installing, please consider future access to equipment.
- No access panel. Tub features factory installed overflow with toe tap drain.
- Air baths require job site preparations for remote mounting the blower and required check valve. Check valve must be installed higher than the rim of the tub.
- Hydrotherapy equipment may ship loose for remote installation depending on tub model. See package content on the following page for details.
- Radiance placed on floor locations will affect placement of air jets.
- Faucet valves cannot be installed on this tub model.



Parisian® 1
MODEL #: 146
66" x 35.75" x 23"

Hydrotherapy Packages	Package Contents	Part #	MSRP
Soaker	Soaking bath - no jets; includes a pre-leveled foam base and factory-installed overflow with toe-tap drain kit in chrome.	S146	\$8,770
Air Massage	20 air jets, heated air blower, pre-leveled foam base and factory-installed overflow with toe-tap drain kit in chrome. Blower and control boxes must be remote located.	AST146	\$11,670
Air Massage Elite	30 air jets, heated air blower, Chromatherapy LED lighting, Spa Mode, pre-leveled foam base and factory-installed overflow with toe-tap drain kit in chrome. Blower and control boxes must be remote located.	AE146	\$13,445

RECOMMENDED SENSORY THERAPIES

Chromatherapy

(LE) **\$640** underwater lighting
2 LED lights included

Audiotherapy

(STEREOBT) **\$1,175** 2 transducers
with bluetooth and amplifier
(BTREMOTE) **\$490** bluetooth remote

(STEREOH202) **\$1,135** 4 transducers
amplifier not included

Thermaltherapy

(RAD100) **\$1,190** Radiance®
2 heated zones included

Options

Must be ordered at time of purchase.

Standard Colors White (CWH)
Biscuit (CBS)

Please call for availability of special colors.

Quick Ship reduces lead time (QSPRI) **\$380**

Please call for availability

Textured, Slip-Resistant Bottom (TXTBTM) **\$100**
Compliant with ASTM C 1028-07 friction coefficient.

Accessories

Pillows from **\$145**

Teak Bath Mat (TKMAT3018) **\$390**

Custom sizes also available. Contact MTI for details and pricing.

Concealed Blower Box

Oak (BBOAK) **\$920**, Cherry (BBCH) **\$920**, Maple (BMAP) **\$920**

Floor-Mounted High-Flow Tub Filler two designs available

Contemporary

Chrome (FILLC) **\$1,680**

Brushed Nickel (FILLBN) **\$1,850**

Traditional

Chrome (FILLTC) **\$1,680**

Brushed Nickel (FILLTBN) **\$1,845**

Faucet Stand SculptureStone® Standard

Small 3-hole capacity

14¼" w x 21¾" h

Matte (STAND) **\$515**

Large 5-hole capacity

22" w x 21¾" h

Matte (STANDL) **\$610**

+\$310 gloss finish upcharge (SSGLOSSNK)

Drains & Overflow Kits *Must be ordered at time of purchase*

Toe Tap with Round Overflow – PVC Drain Kit

Overflow is factory installed

Chrome (WOTTC) included

Brushed Nickel (WOTTBNU) substitute free of charge

Finish Upcharge

White (WOTTWU) **\$35**

Polished Nickel (WOTTPNU) **\$55**

Oil-Rubbed Bronze† (WOTTORU) **\$55**

Special Finishes* (WOTTSFU) **\$585**