

PFLT4024



# Double Basin Laundry Sink

## Product Features

- Made from a Sheet Molding Compound (SMC), a plastic composite made up of filler, fire retardant, thickener, and internal mold release that have been mixed with liquid resin and a catalyst, and molded under extreme heat and pressure to create a laundry tub with unparalleled strength.
- Floor-mounted units are equipped with white baked enamel steel angle legs with leveling devices.
- Knock-out holes provided for 4" and 8" center set faucet holes
- Internal basin depth: 11-1/4"

## Model Numbers

PFLT4024 Floor Mounted Double Compartment Sink  
PFLT4024W Wall Mounted Double Compartment Sink\*

\*Wall-mounting hardware and filler panels included



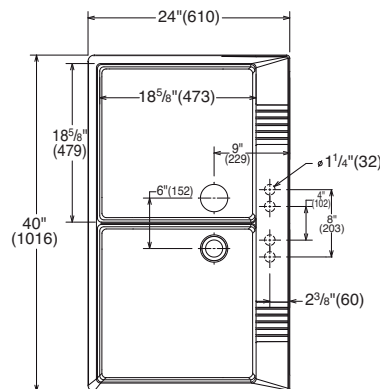
PFLT4024

## Product Features

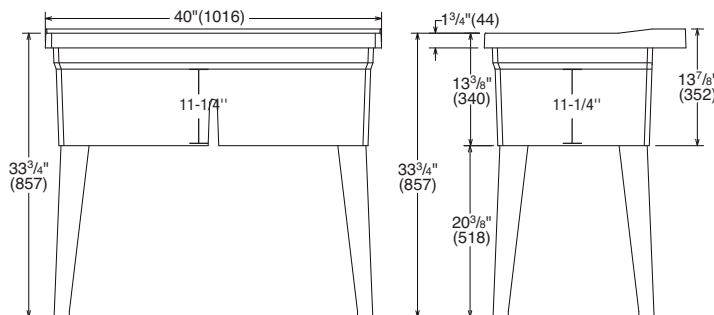
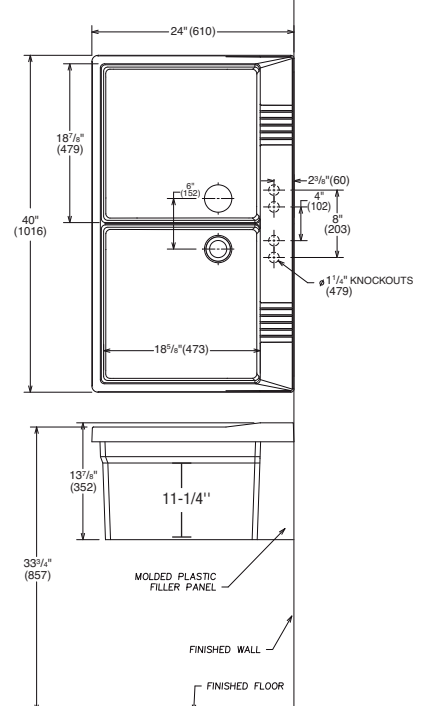
## Available Parts

Part #	Description
PFLTLEGS	LEGS F/PFLT SET 4 WHITE
PFLTWM	WM PART KIT F/PFLT

## PFLT4024 - Floor Mounted



## PFLT4024W - Wall Mounted



## Warranty and Codes

These products come complete with installation, operating, care and maintenance instructions. All PROFLO laundry sinks carry a 1- year limited warranty. In an effort to continually improve our products, we will make design changes from time to time. We reserve the right to ship newly designed product to fill any order unless we agree in writing to do otherwise.



Distributed Exclusively by Ferguson and Wolseley Canada