

Float and Thermostatic Steam Traps (continued)

Series C and X BEAR TRAP®

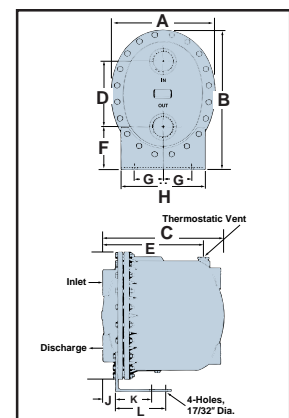
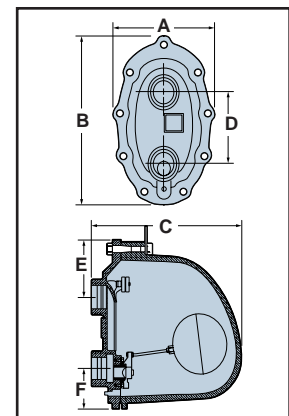
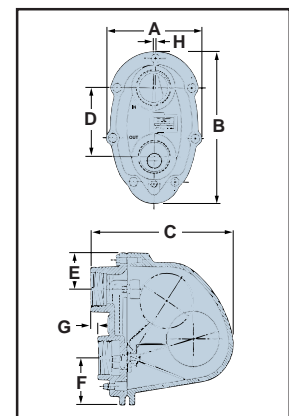
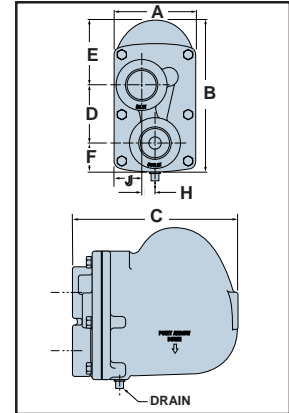
- For large high capacity units
- Sizes available:
 - Series C:**
 - 1 1/4" NPT and BSPT
 - 1 1/2" NPT and BSPT
 - 2" NPT and BSPT
 - 2 1/2" NPT
 - Series X:**
 - 2" NPT
- Resistant to water hammer and corrosion
- Below condensate level seat design prevents steam leakage
- Rugged stainless steel thermostatic element eliminates air binding
- Stainless steel internal components
- Can be serviced without dismantling piping
- Maximum operating pressure 175 psig (12.1 bar)
- Maximum temperature 377°F (192°C)

Materials of Construction	
Part	Specifications
Body and cover	Cast Iron 30,000 psi tensile
Valve Pin and Seat	Stainless Steel (Hardened)
Float	Stainless Steel
Lever Assembly	Stainless Steel
Thermostatic Air Vent	Stainless Steel Cage and Thermal Element
Cover Bolts	Grade 5
Baffle	Stainless Steel {2 1/2" units only}

Dimensions in. (mm)

Size in.	A	B	C	D	E
1 1/4	4 1/4 (108)	8 5/16 (211)	8 9/16 (217)	3 (76)	3 3/8 (86)
1 1/2	4 1/4 (108)	8 5/16 (211)	8 9/16 (217)	3 (76)	3 3/8 (86)
2-Std.	7 3/16 (183)	10 1/8 (257)	10 1/2 (267)	4 15/16 (379)	2 11/16 (68)
2-X	10 (254)	15 (381)	15 1/2 (394)	6 5/8 (168)	4 3/4 (121)
2 1/2	14 1/2 (368)	20 1/4 (514)	17 3/8 (441)	9 1/2 (241)	14 15/16 (379)

Size in.	F	G	H	J	K	L
1 1/4	2 (51)	—	45/64 (17.8)	1 3/8 (35)	—	—
1 1/2	2 (51)	—	45/64 (17.8)	1 3/8 (35)	—	—
2-Std.	3 1/4 (83)	1/2 (12.7)	1/8 (3.2)	—	—	—
2-X	3 1/2 (89)	—	—	—	—	—
2 1/2	6 1/4 (159)	5 (127)	12 (305)	1 5/8 (41)	4 1/2 (114)	7 (178)



Ordering Information

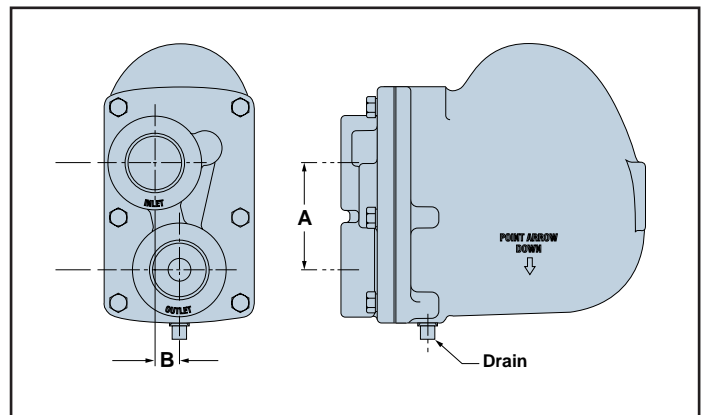
To convert previously manufactured Hoffman Specialty F & T Trap Model numbers, see page 17.

NPT Model Number*	BSPT Model Number	NPT Size in.	BSPT Part Number	Seat		Rating psi (bar)	Rating psi (bar)	Weight lbs. (kg)
				Differential Pressure Part Number	Body Design Pressure Rating			
FT015C-6		1½	404230		15 (1.0)	175 (12.1)	18 (8)	
FT015C-8		2	404240		15 (1.0)	175 (12.1)	33 (15)	
FT015X-8		2	404242		15 (1.0)	175 (12.1)	108 (49)	
FT015C-10		2½	404244		15 (1.0)	175 (12.1)	175 (79)	
FT030C-6		1½	404232		30 (2.1)	175 (12.1)	18 (8)	
FT030C-8		2	401887		30 (2.1)	175 (12.1)	33 (15)	
FT030X-8		2	401899		30 (2.1)	175 (12.1)	108 (49)	
FT030C-10		2½	401875		30 (2.1)	175 (12.1)	175 (79)	
FT075C-5	FT075C-5J	1¼	404224	404225	75 (5.2)	175 (12.1)	18 (8)	
FT075C-6	FT075C-6J	1½	404234	404235	75 (5.2)	175 (12.1)	18 (8)	
FT075C-8	FT075C-8J	2	401890	401891	75 (5.2)	175 (12.1)	33 (15)	
FT075X-8		2	401902		75 (5.2)	175 (12.1)	108 (49)	
FT075C-10		2½	401878		75 (5.2)	175 (12.1)	175 (79)	
FT125C-5	FT125C-5J	1¼	404226	404227	125 (8.6)	175 (12.1)	18 (8)	
FT125C-6	FT125C-6J	1½	404236	404237	125 (8.6)	175 (12.1)	18 (8)	
FT125C-8	FT125C-8J	2	401893	401894	125 (8.6)	175 (12.1)	33 (15)	
FT125X-8		2	401905		125 (8.6)	175 (12.1)	108 (49)	
FT125C-10		2½	401881		125 (8.6)	175 (12.1)	175 (79)	
FT175C-5		1¼	404228		175 (12.1)	175 (12.1)	18 (8)	
FT175C-6		1½	404238		175 (12.1)	175 (12.1)	18 (8)	
FT175C-8		2	401896		175 (12.1)	175 (12.1)	33 (15)	
FT175X-8		2	401907		175 (12.1)	175 (12.1)	105 (49)	
FT175C-10		2½	401884		175 (12.1)	175 (12.1)	175 (79)	

Series C and X Competitive Dimensional Comparison of Distance Between Inlet and Outlet Pipes of Traps with Tappings in the Cover

Dimensions in. (mm)

Size	Manufacturer/Model	A	B
1½"	Hoffman FT015C-6	3 (76)	23/32 (18)
	Spirax FT15	3 (76)	23/32 (18)
2"	Hoffman FT015C-8	4 ¹⁵ / ₁₆ (124)	1/8 (3)
	Mepco/Dunham Bush 30-8A	5 ³ / ₈ (136)	1½ (38)
	Spirax FT15	4 ⁵ / ₁₆ (124)	1/8 (38)
2"	Hoffman FT015X-8	6 ⁵ / ₈ (168)	0
	Armstrong 15-J8	6 ⁵ / ₈ (168)	0
	Mepco/Dunham Bush SA30-815	6 ⁷ / ₈ (175)	1 ³ / ₈ (35)
	Spirax FTB-20	4½ (114)	½ (13)
2½"	Hoffman FT015C-10	9½ (241)	0
	Armstrong 30-L10	11 ⁵ / ₁₆ (287)	0
	Mepco/Dunham Bush SA30-930A	5¼ (133)	1½ (38)
	Spirax FTB-125	7¼ (184)	1 ⁷ / ₁₆ (36)



Float and Thermostatic Steam Traps (continued)

Capacities (Series C and X)

- Determine the differential pressure across the trap (inlet pressure - outlet pressure). On applications where the steam is controlled by a modulating temperature regulator, the trap differential should be 1/2 psi (0.34 bar).
- Determine the capacity based on the differential pressure and the required capacity of the trap to open against the maximum inlet steam pressure.
- Apply a Safety Factor by multiplying required capacity by 1.5.

Capacities (Gross Ratings)

Model	Size in.	Orifice Size in. (mm)	Pressure Differential in Pounds Per Square Inch (bar)																	
			1/4 (0.017)	1/2 (0.035)	1 (0.07)	2 (0.14)	5 (0.35)	10 (0.69)	15 (1.0)	20 (1.4)	25 (1.69)	30 (2.1)	40 (2.8)	50 (3.5)	60 (4.2)	75 (5.2)	100 (6.9)	125 (8.6)	150 (10.4)	175 (12.1)
			Capacities in Pounds of Condensate Per Hour (kg/hr.)																	
FT015C-6	1 1/2	.5 (12.7)	1100 (500)	1700 (770)	2400 (1090)	3300 (1500)	5000 (2270)	6600 (3000)	7600 (3450)											
FT015C-8	2	.687 (17.4)	2300 (1043)	2800 (1270)	3600 (1630)	4650 (2110)	6900 (3130)	9000 (4080)	10,900 (4948)											
FT015X-8	2	.970 (24.6)	6500 (2950)	8000 (3628)	9500 (4310)	10,800 (4900)	15,500 (7030)	20,900 (9480)	24,000 (10,885)											
FT015C-10	2 1/2	1.875 (47.6)	17,000 (7710)	20,000 (9070)	27,000 (12,250)	36,000 (16,330)	46,000 (20,865)	55,000 (24,950)	60,000 (27,210)											
FT030C-6	1 1/2	.390 (10)	1000 (450)	1300 (590)	1700 (770)	2300 (1040)	3400 (1540)	4600 (2085)	5500 (2495)	6000 (2720)	6600 (2995)	7000 (3178)								
FT030C-8	2	.563 (14)	1700 (771)	2500 (1134)	3100 (1406)	4100 (1859)	5800 (2630)	7650 (3470)	9000 (4082)	10,200 (4626)	11,100 (5034)	12,000 (5443)								
FT030X-8	2	.876 (22)	3400 (1543)	4600 (2088)	6400 (2905)	8400 (3813)	12,500 (5675)	16,900 (7672)	19,000 (8626)	21,500 (9761)	23,500 (10,669)	24,000 (10,896)								
FT030C-10	2 1/2	1.625 (41)	14,000 (6356)	17,000 (7718)	20,900 (9488)	25,500 (11,577)	33,200 (15,072)	40,500 (18,387)	45,500 (20,657)	49,400 (22,427)	52,700 (23,925)	55,600 (25,242)								
FT075C-5	1 1/4	.312 (8)	600 (272)	800 (363)	1040 (470)	1410 (640)	2200 (1000)	3100 (1405)	3800 (1725)	4100 (1860)	4500 (2040)	4700 (2130)	5000 (2270)	5300 (2400)	5500 (2500)	5900 (2675)				
FT075C-6	1 1/2	.312 (8)	600 (272)	800 (363)	1040 (470)	1410 (640)	2200 (1000)	3100 (1405)	3800 (1725)	4100 (1860)	4500 (2040)	4700 (2130)	5000 (2270)	5300 (2400)	5500 (2500)	5900 (2675)				
FT075C-8	2	.390 (10)	1000 (453)	1350 (612)	1700 (771)	2150 (975)	2950 (1338)	3600 (1632)	4300 (1950)	4850 (2199)	5400 (2449)	5800 (2630)	6600 (2993)	7200 (3265)	7850 (3560)	8500 (3855)				
FT075X-8	2	.585 (15)	2550 (1156)	3150 (1428)	4300 (1930)	5450 (2472)	7600 (3447)	10,400 (4717)	11,400 (5171)	12,500 (5670)	13,500 (6123)	14,250 (6463)	15,600 (7076)	17,150 (7779)	18,600 (8436)	20,500 (9298)				
FT075C-10	2 1/2	1.031 (26)	5900 (2676)	7700 (3492)	10,000 (4536)	13,000 (5896)	18,600 (8436)	24,200 (10,977)	28,300 (12,836)	31,600 (14,333)	34,400 (15,603)	36,800 (16,692)	41,100 (18,642)	44,800 (20,321)	48,040 (21,790)	52,300 (23,723)				
FT125C-5	1 1/4	.246 (6.2)	430 (195)	540 (245)	700 (320)	940 (425)	1400 (635)	1800 (820)	2200 (1000)	2350 (1065)	2600 (1180)	2800 (1270)	3150 (1430)	3400 (1540)	3500 (1590)	3850 (1750)	4400 (2000)	4800 (2180)		
FT125C-6	1 1/2	.246 (6.2)	430 (195)	540 (245)	700 (320)	940 (425)	1400 (635)	1800 (820)	2200 (1000)	2350 (1065)	2600 (1180)	2800 (1270)	3150 (1430)	3400 (1540)	3500 (1590)	3850 (1750)	4400 (2000)	4800 (2180)		
FT125C-8	2	.294 (7)	730 (331)	900 (408)	1180 (535)	1450 (657)	2000 (907)	2600 (1179)	3100 (1406)	3550 (1610)	3900 (1769)	4250 (1927)	4850 (2199)	5350 (2426)	5850 (2653)	6450 (2925)	7350 (3333)	8150 (3696)		
FT125X-8	2	.448 (11)	2300 (1043)	2800 (1270)	3450 (1564)	4200 (1905)	5450 (2472)	6600 (2993)	7450 (3379)	8050 (3651)	8600 (3900)	8950 (4059)	10,350 (4694)	11,950 (5420)	13,400 (6078)	15,600 (7076)	18,850 (8550)	21,800 (9888)		
FT125C-10	2 1/2	.797 (20)	4000 (1814)	5300 (2404)	6900 (3129)	9100 (4127)	13,000 (5896)	17,100 (7756)	20,000 (9072)	22,400 (10,160)	24,500 (11,113)	26,300 (11,929)	29,400 (13,335)	32,100 (14,560)	34,650 (15,717)	37,600 (17,055)	42,100 (19,096)	46,000 (20,865)		
FT175C-5	1 1/4	.210 (5.3)	260 (120)	350 (160)	480 (220)	640 (290)	940 (425)	1190 (540)	1450 (660)	1560 (710)	1670 (760)	1750 (790)	1910 (865)	2040 (925)	2100 (950)	2300 (1040)	2500 (1135)	2900 (1315)	3140 (1425)	3240 (1470)
FT175C-6	1 1/2	.210 (5.3)	260 (120)	350 (160)	480 (220)	640 (290)	940 (425)	1190 (540)	1450 (660)	1560 (710)	1670 (760)	1750 (790)	1910 (865)	2040 (925)	2100 (950)	2300 (1040)	2500 (1135)	2900 (1315)	3140 (1425)	3240 (1470)
FT175C-8	2	.244 (6)	520 (235)	660 (299)	820 (371)	1050 (476)	1450 (657)	1850 (839)	2250 (1020)	2600 (1179)	2900 (1315)	3100 (1406)	3600 (1632)	4050 (1837)	4400 (1995)	4800 (2177)	5600 (2540)	6250 (2835)	6800 (3084)	7500 (3402)
FT175X-8	2	.375 (10)	2100 (953)	2600 (1180)	3000 (1362)	3500 (1589)	4400 (1997)	4900 (2224)	5350 (2428)	5800 (2633)	6250 (2837)	6700 (3041)	7600 (3450)	8600 (3904)	9550 (4335)	11,000 (4994)	13,000 (5902)	14,750 (6696)	16,500 (7491)	18,000 (8172)
FT175C-10	2 1/2	.688 (17)	2460 (1116)	3350 (1520)	4600 (2088)	6200 (2814)	9400 (4267)	12,800 (5811)	15,400 (6991)	17,500 (7945)	19,300 (8762)	21,000 (9534)	23,800 (10,805)	26,300 (11,940)	28,060 (12,739)	31,600 (14,346)	35,900 (16,298)	39,700 (18,023)	43,100 (19,567)	46,200 (20,974)

Conversion of Previously Manufactured Hoffman Specialty Models to Current Model Numbers

Previously Manufactured			Current Model			Remarks
Model No.	NPT Size in.	Part Number	Model No.	NPT Size in.	Part Number	
55	3/4	401617	FT015H-3	3/4	404200	Revised design
55	1	401620	FT015H-4	1	404210	Revised design
55	1 1/4	401623	FT015H-5	1 1/4	404220	Revised design
55	1 1/2	401626	FT015H-6	1 1/2	401626	No design change on this unit
55	2	401629	FT015H-8	2	401629	No design change on this unit
None	—	—	FT015C-6	1 1/2	404230	New addition to line
None	—	—	FT015C-8	2	404240	New addition to line
None	—	—	FT015X-8	2	404242	New addition to line
None	—	—	FT015C-10	2 1/2	404244	New addition to line
550	1	401632	FT030H-4	1	404212	Revised design
550	1 1/4	401635	FT030H-5	1 1/4	404222	Revised design
550	1 1/2	401638	FT030H-6	1 1/2	401638	No design change on this unit
550	2	401887	FT030C-8	2	401887	No design change on this unit
551	1	401641	FT075H-4	1	404214	Revised design
551	1 1/4	401644	FT075C-5	1 1/4	404224	Changed to cover inlet design
551	1 1/2	401647	FT075C-6	1 1/2	404234	Changed to cover inlet design
551	2	401890	FT075C-8	2	401890	No design change on this unit
552	1	401650	FT125H-4	1	404216	Revised design
552	1 1/4	401653	FT125C-5	1 1/4	404226	Changed to cover inlet design
552	1 1/2	401656	FT125C-6	1 1/2	404236	Changed to cover inlet design
552	2	401893	FT125C-8	2	401893	No design change on this unit
553	1	401659	FT175H-4	1	404218	Revised design
553	1 1/4	401662	FT175C-5	1 1/4	404228	Changed to cover inlet design
553	1 1/2	401665	FT175C-6	1 1/2	404238	Changed to cover inlet design
553	2	401896	FT175C-8	2	401896	No design change on this unit
590	3/4	401668	FT030H-3	3/4	404202	Revised design
590	1	401671	FT030H-4	1	404212	Revised design
590	1 1/2	401674	FT030C-6	1 1/2	404232	Changed to cover inlet design
590	2	401899	FT030X-8	2	401899	No design change on this unit
590	2 1/2	401875	FT030C-10	2 1/2	401875	No design change on this unit
591	3/4	401677	FT075H-3	3/4	404204	Revised design
591	1	401680	FT075H-4	1	404214	Revised design
591	1 1/2	401683	FT075C-6	1 1/2	404234	Changed to cover inlet design
591	2	401902	FT075X-8	2	401902	No design change on this unit
591	2 1/2	401878	FT075C-10	2 1/2	401878	No design change on this unit
592	3/4	401686	FT125H-3	3/4	404206	Revised design
592	1	401689	FT125H-4	1	404216	Revised design
592	1 1/2	401692	FT125C-6	1 1/2	404236	Changed to cover inlet design
592	2	401905	FT125X-8	2	401905	No design change on this unit
592	2 1/2	401881	FT125C-10	2 1/2	401881	No design change on this unit
593	3/4	401695	FT175H-3	3/4	404208	Revised design
593	1	401698	FT175H-4	1	404218	Revised design
593	1 1/4	401701	FT175C-5	1 1/4	404228	Changed to cover inlet design
593	2	401907	FT175X-8	2	401907	No design change on this unit
593	2 1/2	401884	FT175C-10	2 1/2	401884	No design change on this unit

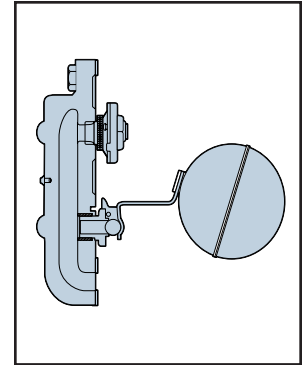
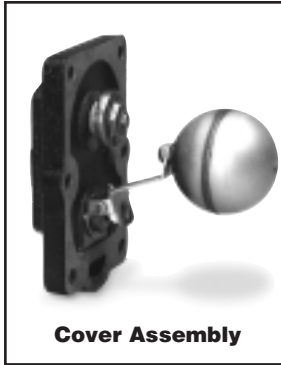
Current Model number designation code example:

Model	Seat Pressure	Series	Size
FT	015	H	3

Float and Thermostatic Steam Traps (continued)

Cover Assemblies for Spirax Sarco Float & Thermostatic Steam Traps

Spirax Sarco F&T Trap Model Number	Pressure psi (bar)	Size in.	Hoffman Specialty Cover Assembly* Part Number
FT15	15 (1.1)	3/4	604001
		1	604001
		1 1/4	604006
		1 1/2	604011
FT30	30 (2.1)	3/4	604002
		1	604002
		1 1/4	604007
		1 1/2	604012
FT75	75 (5.3)	3/4	604003
		1	604003
		1 1/4	604008
		1 1/2	604013
FT125	125 (8.8)	3/4	604004
		1	604004
		1 1/4	604009
		1 1/2	604014



* Cover assembly includes cover casting, all internal components, and cover gasket.