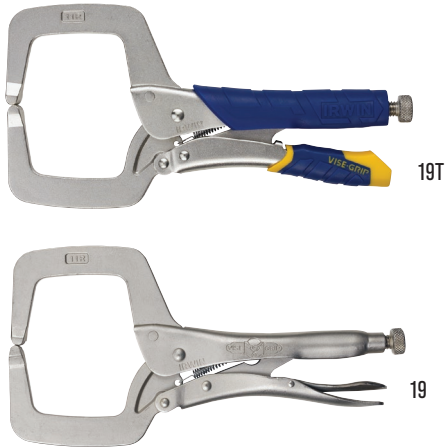


Pliers, Wrenches & Locking Tools

C-Clamps/Wrenches

WISE-GRIP® Locking C-Clamps with Regular Tips



- Wide-opening jaw provides greater versatility for clamping a variety of shapes

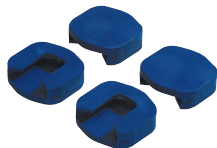
Model	Description	Jaw Capacity	Carded Item #
Fast Release™			
11R®	Fast Release Locking Clamp - 11" (275 mm)	4" (102 mm)	19T
6R®	Fast Release Locking Clamp - 6" (150 mm)	2-1/8" (54 mm)	17T
Original™			
24R®	Original Locking Clamp - 24" (605 mm)	10" (254 mm)	275
18DR®	Original Locking Clamp - 18" (455 mm)	7-1/2" (190 mm)	211ZR
18R®	Original Locking Clamp - 18" (455 mm)	8" (203 mm)	21
11R	Original Locking Clamp - 11" (275 mm)	4" (102 mm)	19
9DR®	Original Locking Clamp - 9" (225 mm)	4-1/2" (114 mm)	30
6R	Original Locking Clamp - 6" (150 mm)	2-1/8" (54 mm)	17

WISE-GRIP® Locking C-Clamps with Swivel Pads



- Swivel pads hold tapered work, cumbersome fabricating jobs and delicate projects without damaging the work surface

Model	Description	Jaw Capacity	Carded Item #
Original™ Handle			
24SP™	Locking Clamp w/ Swivel Pads - 24" (605 mm)	10" (254 mm)	28
18SP™	Locking Clamp w/ Swivel Pads - 18" (455 mm)	8" (203 mm)	22
11SP®	Locking Clamp w/ Swivel Pads - 11" (275 mm)	4" (102 mm)	20
9SP™	Locking Clamp w/ Swivel Pads - 9" (225 mm)	4-1/2" (114 mm)	31
6SP™	Locking Clamp w/ Swivel Pads - 6" (150 mm)	2-1/8" (54 mm)	18
4SP™	Locking Clamp w/ Swivel Pads - 4" (100 mm)	1-5/8" (41 mm)	165



40153

- Soft pads fit 11SP, 18SP and 24SP (see page 13)

WISE-GRIP® Locking Wrenches



- Heavy duty jaws lock onto three sides of a hex fastener, and won't slip or mar the work piece

Model	Description	Jaw Capacity	Carded Item #
Original™			
10LW®	Locking Wrench - 10" (250 mm)	5/8"- 1-1/8" (16 mm - 28 mm)	2
7LW®	Locking Wrench - 7" (175 mm)	7/16"- 3/4" (11 mm - 19 mm)	4
4LW®	Locking Wrench - 4" (100 mm)	1/4"- 9/16" (7 mm - 14 mm)	8