

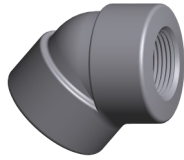
Forged Carbon Steel Threaded Fittings

ASTM A105, ASME B16.11, ASME B1.20.1

CAPITOL
manufacturing



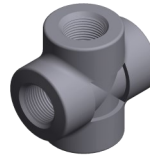
90° Threaded Elbows
1/8" to 4" Class 2000
1/8" to 4" Class 3000
1/8" to 4" Class 6000



45° Threaded Elbows
1/4" to 4" Class 2000
1/8" to 4" Class 3000
1/8" to 4" Class 6000



Threaded TEES
1/8" to 4" Class 2000
1/8" to 4" Class 3000
1/8" to 4" Class 6000



Threaded Crosses
1/8" to 4" Class 2000
1/8" to 4" Class 3000
1/8" to 3" Class 6000



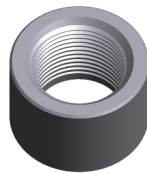
Threaded Street Elbows
1/8" to 2" Class 3000
1/4" to 1 1/2" Class 6000



Threaded Laterals
1/2 to 2" Class 3000
3/4" to 1 1/2" Class 6000



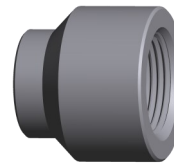
Threaded Couplings
1/8" to 4" Class 3000
1/8" to 4" Class 6000



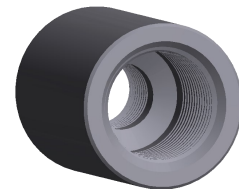
Threaded Half Couplings
1/8" to 4" Class 3000
1/8" to 4" Class 6000



Threaded Pipe Caps
1/8" to 4" Class 3000
1/8" to 4" Class 6000



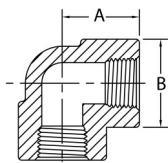
Threaded Couplets
1/4" to 4" Class 3000
1/4" to 4" Class 6000



Threaded Reducing Couplings
1/4" to 4" Class 3000
1/4" to 4" Class 6000

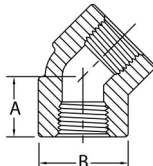
Class 2000 Forged Carbon Steel Threaded Fittings

ASTM A105, ASME B16.11, ASME B1.20.1



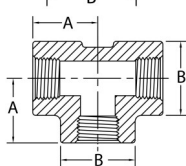
90 Degree Elbows

Pipe Size	1/8	1/4	3/8	1/2	3/4	1	1-1/4	1-1/2	2	2-1/2	3	4
A	0.810	0.810	0.970	1.120	1.310	1.500	1.750	2.000	2.380	3.000	3.380	4.190
B	0.880	0.880	1.000	1.310	1.500	1.810	2.190	2.440	2.970	3.690	4.310	5.750
Wt. Ea.	0.38	0.34	0.28	0.49	0.70	1.03	1.63	2.04	3.38	6.56	10.00	22.50



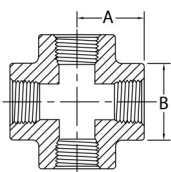
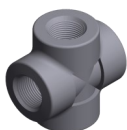
45 Degree Elbows

Pipe Size	1/8	1/4	3/8	1/2	3/4	1	1-1/4	1-1/2	2	2-1/2	3	4
A		0.690	0.750	0.880	1.000	1.120	1.310	1.380	1.690	2.060	2.500	3.120
B		0.880	1.000	1.310	1.500	1.810	2.190	2.440	2.970	3.690	4.310	6.000
Wt. Ea.		0.14	0.23	0.45	0.59	0.90	1.40	1.65	2.63	7.63	12.00	19.75



Tees

Pipe Size	1/8	1/4	3/8	1/2	3/4	1	1-1/4	1-1/2	2	2-1/2	3	4
A	0.810	0.810	0.970	1.120	1.310	1.500	1.750	2.000	2.380	3.000	3.380	4.190
B	0.880	0.880	1.000	1.310	1.500	1.810	2.190	2.440	2.970	3.620	4.310	5.750
Wt. Ea.	0.28	0.26	0.34	0.69	0.95	1.35	2.10	2.75	4.25	9.06	13.50	32.50



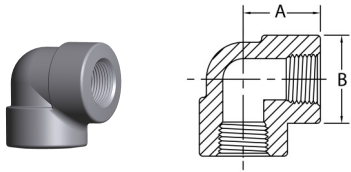
Crosses

Pipe Size	1/8	1/4	3/8	1/2	3/4	1	1-1/4	1-1/2	2	*2-1/2	*3	*4
A	0.970	0.970	0.970	1.120	1.310	1.500	1.750	2.000	2.380	3.250	3.750	4.500
B	1.000	1.000	1.000	1.310	1.500	1.810	2.190	2.440	2.970	4.000	4.750	6.000
Wt. Ea.	0.52	0.51	0.50	0.80	1.05	1.65	2.35	3.28	5.00	17.20	22.10	34.13

* 2-1/2, 3 and 4 are not to ASME B16.11

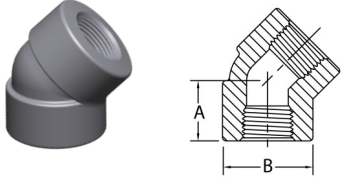
Class 3000 Forged Carbon Steel Threaded Fittings

ASTM A105, ASME B16.11, ASME B1.20.1



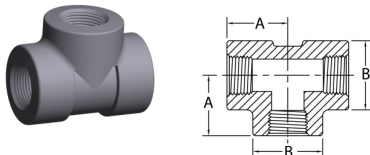
90 Degree Elbows

Pipe Size	1/8	1/4	3/8	1/2	3/4	1	1-1/4	1-1/2	2	2-1/2	3	4
A	0.810	0.970	1.120	1.310	1.500	1.750	2.000	2.380	2.500	3.250	3.750	4.500
B	0.880	1.000	1.310	1.500	1.810	2.190	2.440	2.970	3.310	4.000	4.750	6.000
Wt. Ea.	0.21	0.31	0.60	0.91	1.43	2.28	2.88	4.88	5.44	10.00	17.13	29.25



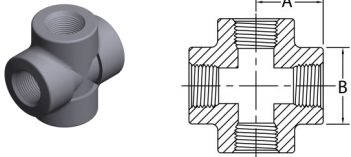
45 Degree Elbows

Pipe Size	1/8	1/4	3/8	1/2	3/4	1	1-1/4	1-1/2	2	2-1/2	3	4
A	0.690	0.750	0.880	1.000	1.120	1.310	1.380	1.690	1.720	2.060	2.500	3.120
B	0.880	1.000	1.310	1.500	1.810	2.190	2.440	2.970	3.310	4.000	4.750	6.000
Wt. Ea.	0.18	0.26	0.54	0.75	1.18	2.03	2.13	4.05	4.25	7.63	12.00	19.75



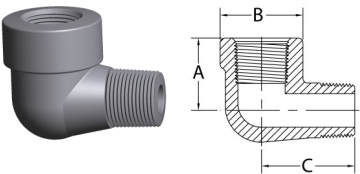
Tees

Pipe Size	1/8	1/4	3/8	1/2	3/4	1	1-1/4	1-1/2	2	2-1/2	3	4
A	0.810	0.970	1.120	1.310	1.500	1.750	2.000	2.380	2.500	3.250	3.750	4.500
B	0.880	1.000	1.310	1.500	1.810	2.190	2.440	2.970	3.310	4.000	4.750	6.000
Wt. Ea.	0.28	0.43	0.84	1.23	1.85	3.00	3.63	6.83	7.00	13.75	21.00	38.00



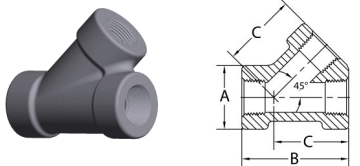
Crosses

Pipe Size	1/8	1/4	3/8	1/2	3/4	1	1-1/4	1-1/2	2	2-1/2	3	4
A	0.970	0.970	1.120	1.310	1.500	1.750	2.000	2.380	2.500	3.250	3.750	4.500
B	1.000	1.000	1.310	1.500	1.810	2.190	2.440	2.970	3.310	4.000	4.750	6.000
Wt. Ea.	0.51	0.50	0.96	1.43	2.30	3.73	4.40	8.13	8.31	16.94	20.75	34.13



Street Elbows

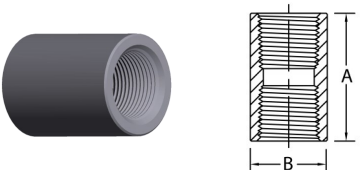
Pipe Size	1/8	1/4	3/8	1/2	3/4	1	1-1/4	1-1/2	2	2-1/2	3	4
A	0.880	0.880	1.000	1.120	1.380	1.750	2.000	2.120	2.500			
B	0.875	1.000	1.250	1.500	1.750	2.000	2.440	2.750	3.310			
C	1.250	1.250	1.500	1.620	1.880	2.250	2.620	2.810	3.310			
Wt. Ea.	0.20	0.25	0.36	0.53	0.85	1.38	2.25	2.81	5.09			



Laterals

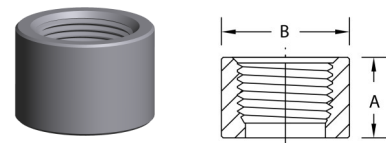
Laterals not covered by ASME B16.11

Pipe Size	1/8	1/4	3/8	1/2	3/4	1	1-1/4	1-1/2	2	2-1/2	3	4
A				1.500	1.750	2.219	2.500	3.030	3.344			
B				2.500	3.000	4.813	5.375	6.438	6.625			
C				1.750	2.125	3.500	3.938	4.750	5.000			
Wt. Ea.				1.12	1.50	2.62	3.10	11.00	11.00			



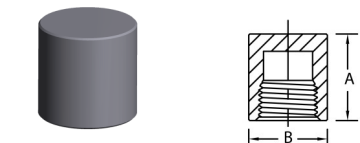
Couplings

Pipe Size	1/8	1/4	3/8	1/2	3/4	1	1-1/4	1-1/2	2	2-1/2	3	4
A	1.250	1.375	1.500	1.875	2.000	2.375	2.625	3.125	3.375	3.625	4.250	4.750
B	0.625	0.750	0.875	1.125	1.375	1.750	2.250	2.500	3.000	3.625	4.250	5.500
Wt. Ea.	0.11	0.10	0.13	0.28	0.42	0.85	1.50	2.19	3.02	4.56	6.79	12.00



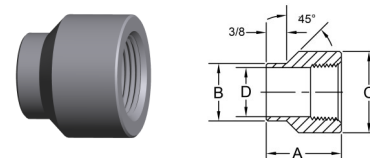
Half Couplings

Pipe Size	1/8	1/4	3/8	1/2	3/4	1	1-1/4	1-1/2	2	2-1/2	3	4
A	0.625	0.688	0.750	0.938	1.000	1.188	1.312	1.562	1.688	1.812	2.125	2.375
B	0.625	0.750	0.875	1.125	1.375	1.750	2.250	2.500	3.000	3.625	4.250	5.500
Wt. Ea.	0.06	0.05	0.06	0.14	0.21	0.43	0.75	1.09	1.57	2.28	3.40	6.00



Pipe Caps

Pipe Size	1/8	1/4	3/8	1/2	3/4	1	1-1/4	1-1/2	2	2-1/2	3	4
A	0.812	1.062	1.062	1.312	1.500	1.687	1.781	1.937	2.250	2.375	2.562	2.687
B	0.750	0.750	0.875	1.125	1.375	1.750	2.250	2.500	3.000	3.625	4.250	5.500
Wt. Ea.	0.08	0.09	0.11	0.24	0.39	0.72	1.32	1.54	2.34	4.05	5.84	10.08



Couplets

Pipe Size	1/8	1/4	3/8	1/2	3/4	1	1-1/4	1-1/2	2	2-1/2	3	4
A		1.188	1.188	1.313	1.375	1.688	1.875	2.000	2.250	2.500	2.750	3.000
B		0.688	0.813	0.938	1.063	1.313	1.688	1.938	2.438	2.875	3.500	4.500
C		0.938	1.063	1.313	1.500	1.813	2.188	2.500	3.125	3.625	4.375	5.563
D		0.433	0.566	0.700	0.906	1.137	1.480	1.720	2.193	2.614	3.234	4.227
Wt. Ea.		0.12	0.14	0.26	0.26	0.52	0.82	1.06	1.54	2.40	6.70	7.30