

| BILL OF MATERIAL (CURRENT LEVEL) |         |                               |          |      |
|----------------------------------|---------|-------------------------------|----------|------|
| ITEM                             | PT/ASSY | DESCRIPTION                   | TYPE     | QTY. |
| 1                                | 80074   | THERMO TRIM PLATE (FINISHED)  | PART     | 1    |
| 2                                | 1-232   | THERMO WALL PLATE ASM         | ASSEMBLY | 1    |
| 3                                | 11029   | SLEEVE - THERMO               | PART     | 1    |
| 4                                | 8-034   | THERMO BONNET W/ LEVER HANDLE | ASSEMBLY | 1    |
| 5                                | 91308   | TEMP LIMIT STOP - THERMO      | PART     | 1    |

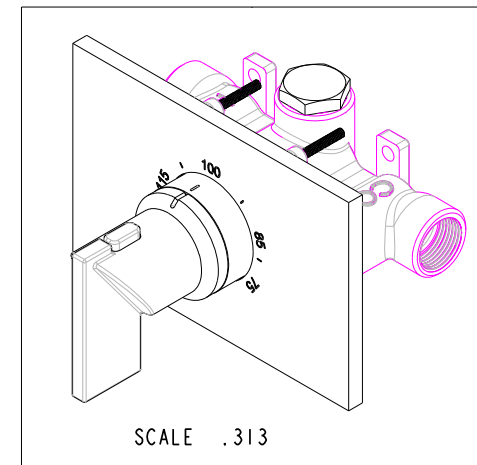
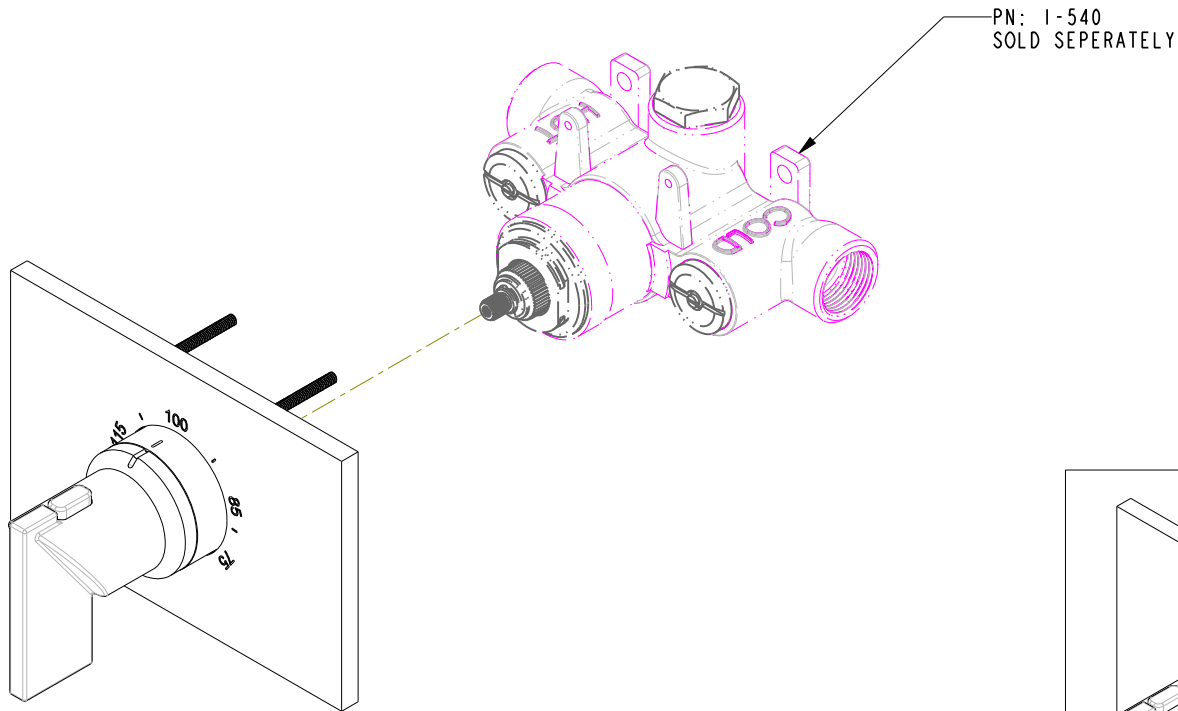
COPYRIGHT 2005 BRASSTECH, INC. THESE DRAWINGS AND THE DESIGNS DEPICTED HEREIN ARE THE PROPRIETARY PROPERTY OF BRASSTECH. ANY USE OR REPRODUCTION IS SUBJECT TO THE EXPRESS APPROVAL OF BRASSTECH. UNAUTHORIZED USE IS STRICTLY PROHIBITED. ALL RIGHTS RESERVED.

**BRASSTECH**  
INCORPORATED  
2001 E. CARNEGIE AVE.  
SANTA ANA, CA 92705  
(949) 417-5207

THERMOSTATIC TRIM PLATE WITH HANDLE

|                    |              |     |          |          |
|--------------------|--------------|-----|----------|----------|
| ASSY. NO. 3-2544TS |              | A   | EN-1886  | 08/31/11 |
| SCALE .375         |              | -   | EN-1735  | 06/10/11 |
| REF. -             | SHEET 1 OF 3 | REV | REV DESC | DATE     |

# SPECIFICATION DWG



DIMENSIONS ARE IN INCHES AND AN APPROXIMATION OF A TYPICAL INSTALLATION

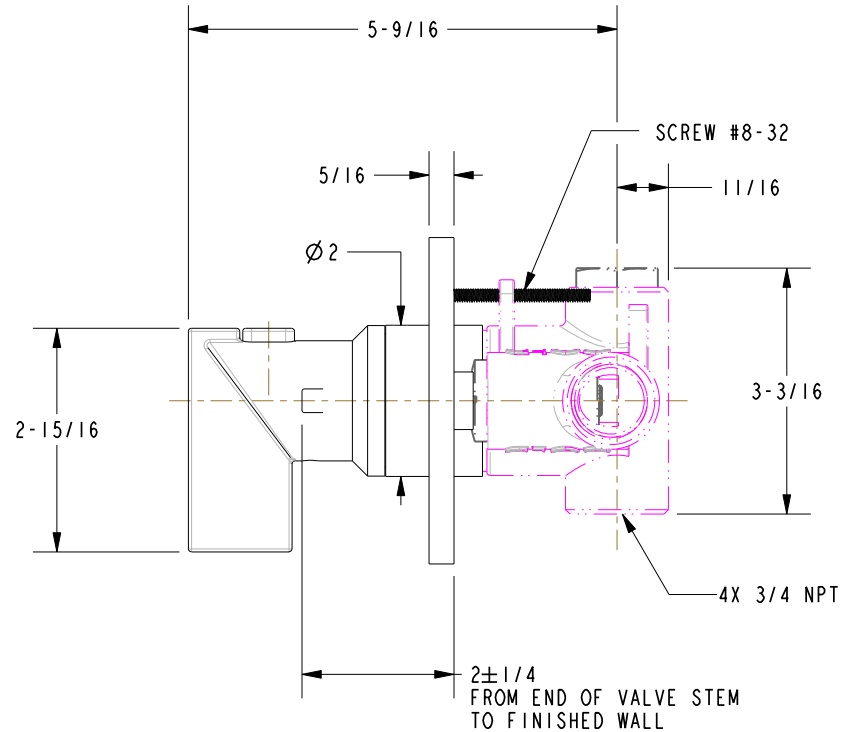
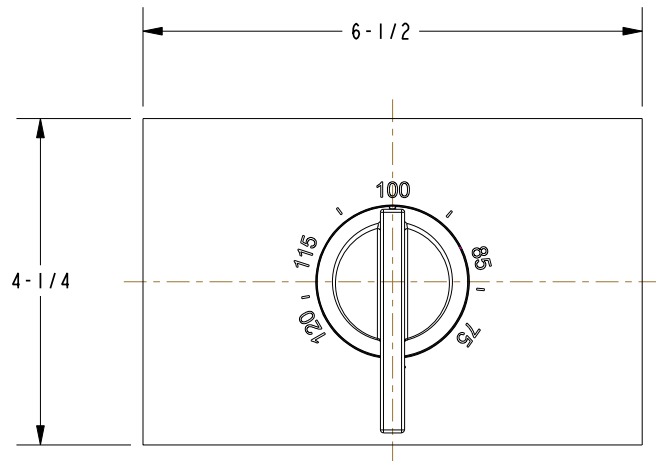
COPYRIGHT 2005 BRASSTECH, INC. THESE DRAWINGS AND THE DESIGNS DEPICTED HEREIN ARE THE PROPRIETARY PROPERTY OF BRASSTECH. ANY USE OR REPRODUCTION IS SUBJECT TO THE EXPRESS APPROVAL OF BRASSTECH. UNAUTHORIZED USE IS STRICTLY PROHIBITED. ALL RIGHTS RESERVED.

|                  |          |  |          |
|------------------|----------|--|----------|
| <b>BRASSTECH</b> |          | 2001 E. CARNEGIE AVE.<br>SANTA ANA, CA 92705<br>(949) 417-5207 |          |
| INCORPORATED     |          |  |          |
| DWG NO.          | 3-2544TS |  | REV<br>A |
| SCALE .375       | REF. -   | SHEET 2  | OF 3     |

# SPECIFICATION DWG

## NOTES:

I. VALVE, PN: I-540, SOLD SEPERATELY.



DIMENSIONS ARE IN INCHES AND AN APPROXIMATION OF A TYPICAL INSTALLATION

COPYRIGHT 2005 BRASSTECH, INC. THESE DRAWINGS AND THE DESIGNS DEPICTED HEREIN ARE THE PROPRIETARY PROPERTY OF BRASSTECH. ANY USE OR REPRODUCTION IS SUBJECT TO THE EXPRESS APPROVAL OF BRASSTECH. UNAUTHORIZED USE IS STRICTLY PROHIBITED. ALL RIGHTS RESERVED.

|                  |          |                       |
|------------------|----------|-----------------------|
| <b>BRASSTECH</b> |          | 2001 E. CARNEGIE AVE. |
| INCORPORATED     |          | SANTA ANA, CA 92705   |
|                  |          | (949) 417-5207        |
| DWG NO.          | 3-2544TS | REV A                 |
| SCALE .400       | REF. -   | SHEET 3 OF 3          |