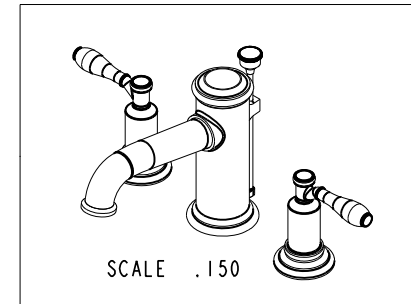
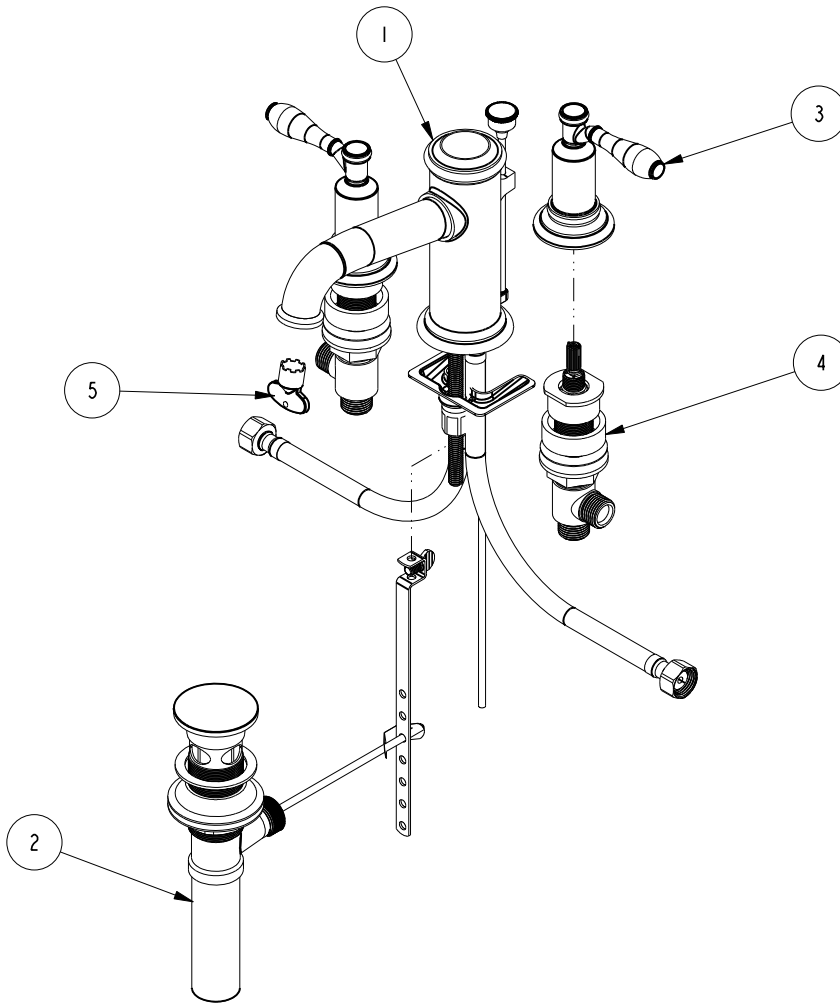


NOTES:

(N1) 1. FIT / FORM / FUNCTION SHALL FOLLOW PS-E.008.

**BILL OF MATERIAL (CURRENT LEVEL)**

ITEM	PT/ASSY	DESCRIPTION	TYPE	QTY.
1	8-061	LAVATORY SPOUT	ASSEMBLY	1
2	325	POP UP ASSEMBLY	ASSEMBLY	1
3	3-593	FLOW CONTROL HANDLE	ASSEMBLY	2
4	1-676	W/S VALVE INSTALLATION	ASSEMBLY	1
5	11403	AERATOR KEY	PART	1



ZONE	REV	DESCRIPTION	DATE	APPROVED
-	C	EN-3601	05/07/18	V.V.
-	B	EN-3271A	12/21/17	J.A.
-	A	EN-2811	09/22/14	-
-	-	EN-1735	06/10/11	-

COPYRIGHT 2005 BRASSTECH, INC. THESE DRAWINGS AND THE DESIGNS DEPICTED HEREIN ARE THE PROPRIETARY PROPERTY OF BRASSTECH. ANY USE OR REPRODUCTION IS SUBJECT TO THE EXPRESS APPROVAL OF BRASSTECH. UNAUTHORIZED USE IS STRICTLY PROHIBITED. ALL RIGHTS RESERVED.

TESTING	-	-	-
ASSEMBLY	-	-	-
PLATING	-	-	-
POLISHING	-	NEXT ASSY	USED ON
MACHINING	-	APPLICATION	
TOOLING FIXTURE #	REMOVE ALL BURRS AND SHARP EDGES		

UNITS ARE: INCHES [MM]		
TOLERANCES ARE:		
FRACTIONS	DECIMALS	ANGLES
$\pm 1/16"$	.X $\pm .1$ [2.5]	$\pm 1^\circ$
	.XX $\pm .06$ [1.5]	
(X.XXX) DENOTES CRITICAL DIMS. ALL THREADS ARE CRITICAL		
DRAWN	JINSON	12/21/17
CHECKED	J.A.	12/21/17
APPROVED	J.A.	12/21/17

**BRASSTECH** 2001 CARNEGIE AVE. SANTA ANA, CA 92705 (949) 417-5207  
INCORPORATED

**W/S LAVATORY FAUCET**

DWG NO. **2550** REV C

SCALE .200 REF. - SHEET 1 OF 2

